



Technical Committee

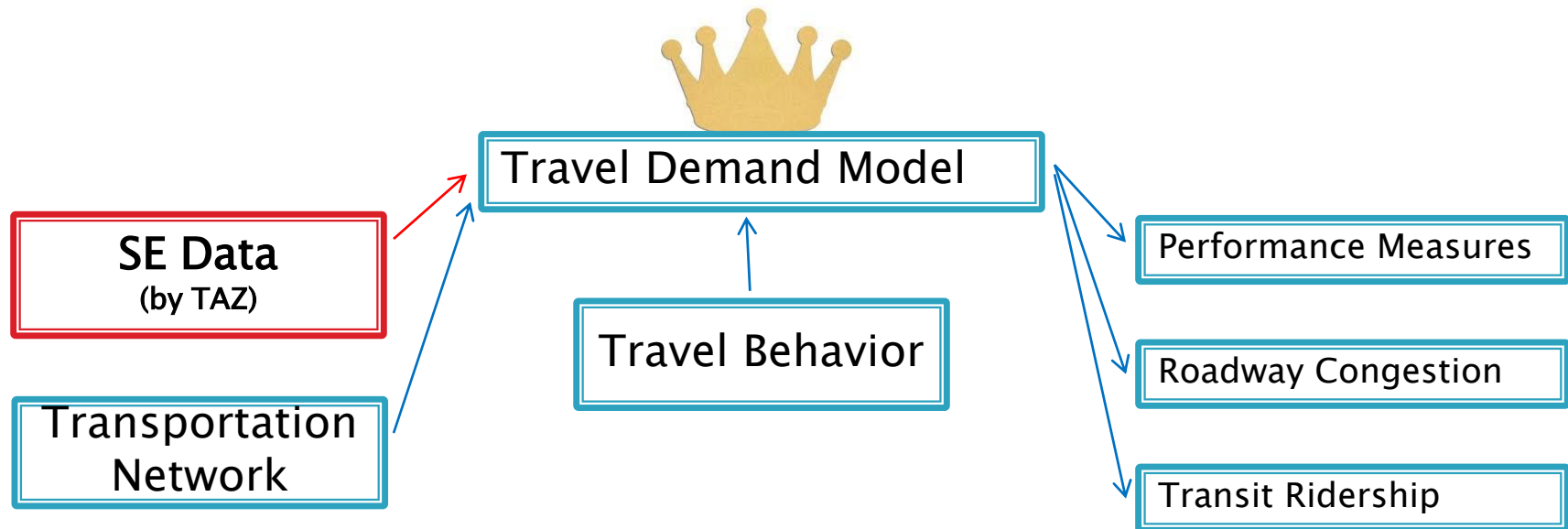
September 23, 2020

SE Data and Guide Totals

Need for SE Data

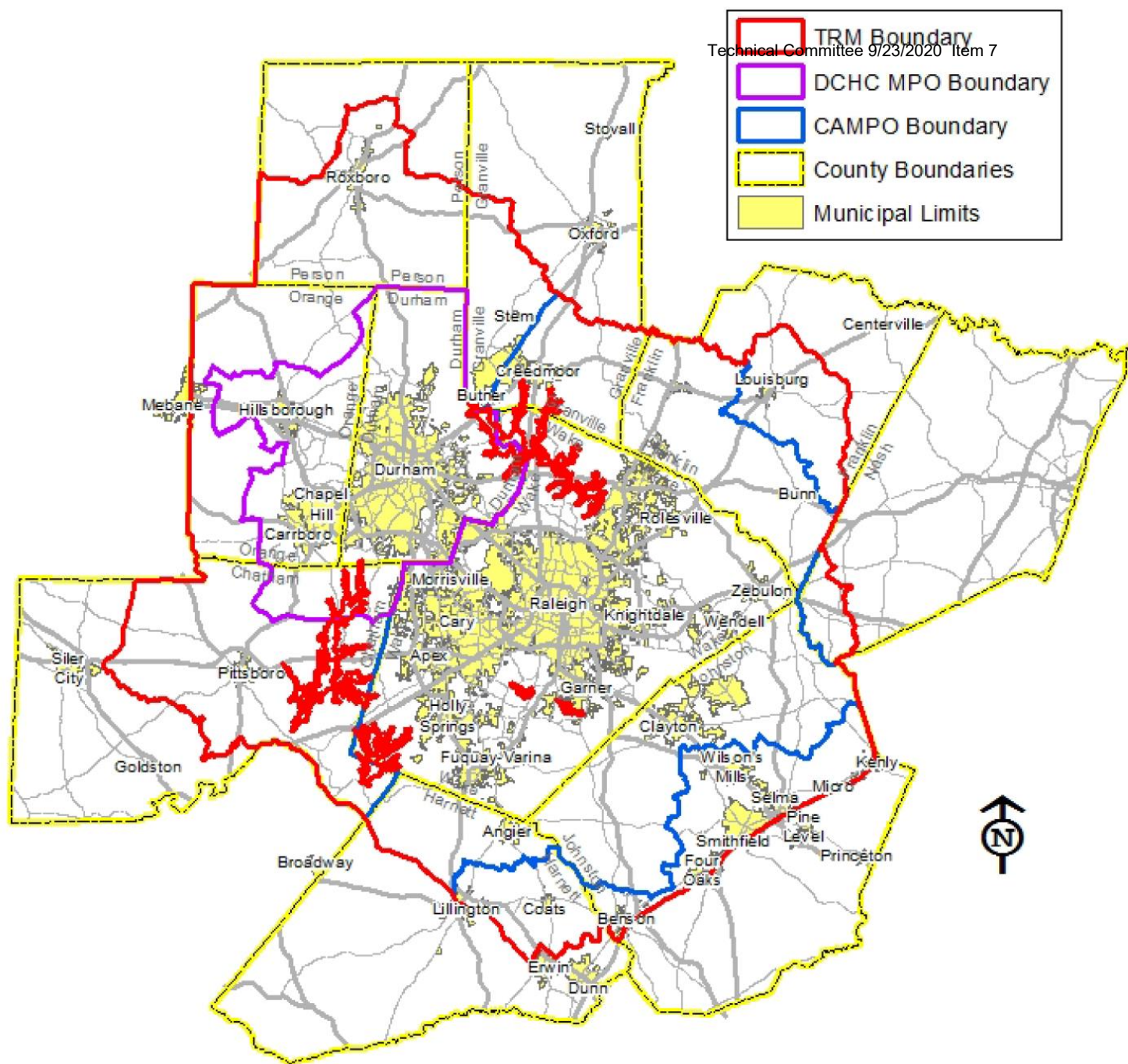
What is SE Data?

- Where people live and work (and income)
- By Traffic Analysis Zone (TAZ)
- Years: 2016 base year, plus 2030, 2040 and 2050 forecasts



What is Model Area?

DCHC MPO is responsible for Durham, Orange, Chatham and Person counties' SE Data.



2016 Base Year

Dwelling Units

(Population)

- COs (certificates of occupancy for new dwelling units). Convert to population
- Guide total: Check against county population estimates of N.C. OSMB (Office of State Management and Budget) and Census ACS (American Community Survey)

Employment

- Start with previous geo-database and InfoUSA data
- Local planners use Web-based tool (ArcGIS Online) to add, delete and adjust.
- Guide Total: N.C. Employment Security Commission (ESC) data.

Guide Totals help check population and employment methods.

Also collecting 2020 year data to calibrate TRM.

2030/2040/2050 Forecasts

County-level
SE Data growth



Community Visualization
Land Use Model



SE Data
(by TAZ)

County-level SE Data growth is
based on Guide Totals.

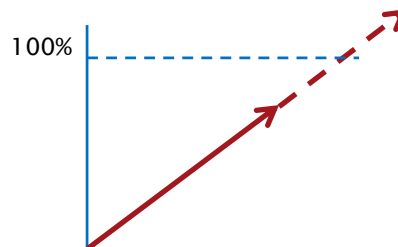
Forecasted Guide Totals

Dwelling Units

(Population)

- Use N.C. Office of State Management and Budget county-level population forecasts up to year 2040 (or most recent year).
- Project county-level population to year 2050 based on trend in years 2035-2040.

County	Population (TRM portions of County)			
	2016	2050	Growth	Annual Rate
Chatham	46,500	103,661	57,161	2.4%
Durham	302,879	458,395	155,516	1.2%
Franklin	56,114	95,616	39,501	1.6%
Granville	37,068	70,859	33,791	1.9%
Harnett	42,317	70,512	28,194	1.5%
Johnston	160,023	369,014	208,991	2.5%
Nash	4,004	4,652	647	0.4%
Orange	142,148	193,600	51,452	0.9%
Person	32,580	38,371	5,791	0.5%
Wake	1,028,509	1,764,577	736,068	1.6%
<i>Total</i>	<i>1,852,143</i>	<i>3,169,256</i>	<i>1,317,113</i>	<i>1.6%</i>



Forecasted Guide Totals

Employment

- Calculate county-level employment growth from 2016 to 2050 using Woods & Poole Economics forecasts.
- Apply resulting growth factors to county-level 2016 employment totals.

County	Total Employment (TRM Portions of County)			
	2016	2050	Growth	Annual Rate
Chatham	16,380	41,291	24,911	2.84%
Durham	255,029	482,114	227,085	1.95%
Franklin	16,735	30,555	13,820	1.84%
Granville	17,277	36,065	18,788	2.26%
Harnett	12,693	20,619	7,926	1.48%
Johnston	61,052	124,733	63,681	2.19%
Nash	2,221	2,826	606	0.73%
Orange	102,454	166,637	64,183	1.48%
Person	12,059	14,265	2,206	0.51%
Wake	728,416	1,550,658	822,242	2.32%
<i>Total</i>	<i>1,224,316</i>	<i>2,469,762</i>	<i>1,245,447</i>	<i>2.15%</i>

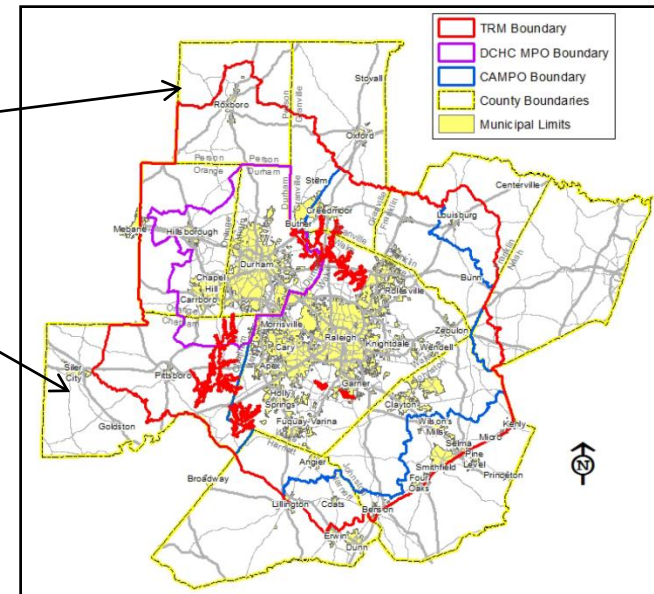


Forecasted Guide Total

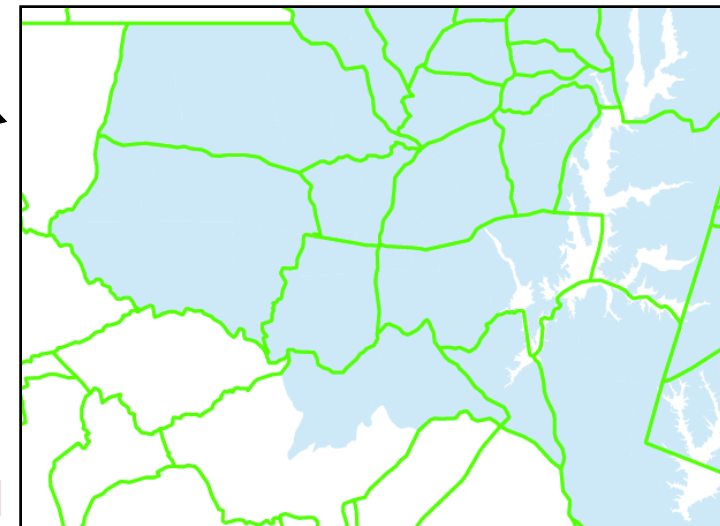
Metropolitan Planning Organization
Planning Tomorrow Today

Wait a Minute! What about partial counties?...

- Don't use percentage of area that is within model area (i.e., 35% of area, *ergo*, 35% of 2050 population).
- Areas tend to have more dense population toward urban centers.
- Create trend for area within model area using Census data.



Block groups



	Year	Modeling Region Population	Total County Population		
Census Data	1990	61,000	81,306	75.03%	
	2000	97,000	121,965	79.53%	
	2010	139,000	168,878	82.31%	
Estimated based on Linear Trend	2020	177,000	211,622	83.64%	86.24%
	2030	216,000	255,408	84.57%	89.88%
	2040	255,000	299,194	85.23%	93.52%