



# Draft Environmental Justice Report

Anne Phillips, LPA Staff

# Statutory Framework for EJ

Title VI of the  
Civil Rights Act  
of 1964

Executive Order  
12898 of 1994

National  
Environmental  
Policy Act (NEPA)

USDOT Planning  
Requirements

## Key Terms

---

### Environmental Justice

The fair treatment and meaningful involvement of all people regardless of race, color, national origin, or income, with respect to the development, implementation, and enforcement of environmental laws, regulations, and policies

### Communities of Concern

A geographic area where the percentage of any EJ population is greater than the regional threshold for that EJ population

# Core Principles of EJ

- 1. Avoid, minimize, or mitigate** disproportionately high and adverse human health or environmental effects, including social and economic effects, on minority populations and low-income populations.
- 2. Ensure the full and fair participation** by all potentially affected communities in the transportation decision-making process.
- 3. Prevent the denial of, reduction in, or significant delay in the receipt of benefits** by minority populations and low-income populations.

# EJ Populations

1. Minority  
Populations

2. Low-Income  
Households

3. Elderly  
Populations

4. Limited  
English  
Proficiency (LEP)

5. Zero-car  
Households

# Methodology

- Census block groups
- Regional thresholds for each EJ population group were developed and used as benchmarks.
- Total population numbers for each EJ population in the Census Block Groups within the DCHC MPO were found and then compared to the total population of the MPO to determine the percent of total population for each EJ population.
- Each regional threshold was then used during the analysis and identification of EJ communities of concern.

**Table 3.1: Regional Thresholds for EJ Population Groups**

| EJ Communities of Concern              | Count    | %    |
|--|----------|------|
| Total Population                       | 455,813  |      |
| Total Households                       | 182,810  |      |
| Racial Minority Population             | 218,877  | 48%  |
| Hispanic/Latino Population             | 53,434   | 12%  |
| Black Population                       | 126,910  | 28%  |
| Elderly Population                     | 59,095   | 13%  |
| Limited English Proficiency Households | 7,687    | 4.2% |
| Low Income Limit for Households        | \$38,920 |      |
| Zero-Car Households                    | 12,722   | 7%   |

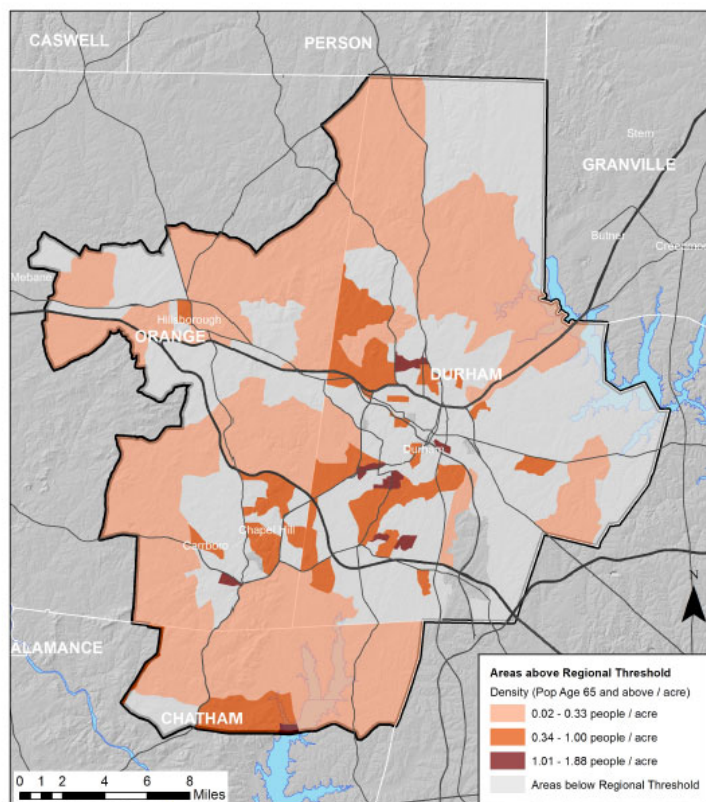
# Communities of Concern Summary

Table 3.2: Summary of CoC Block Groups

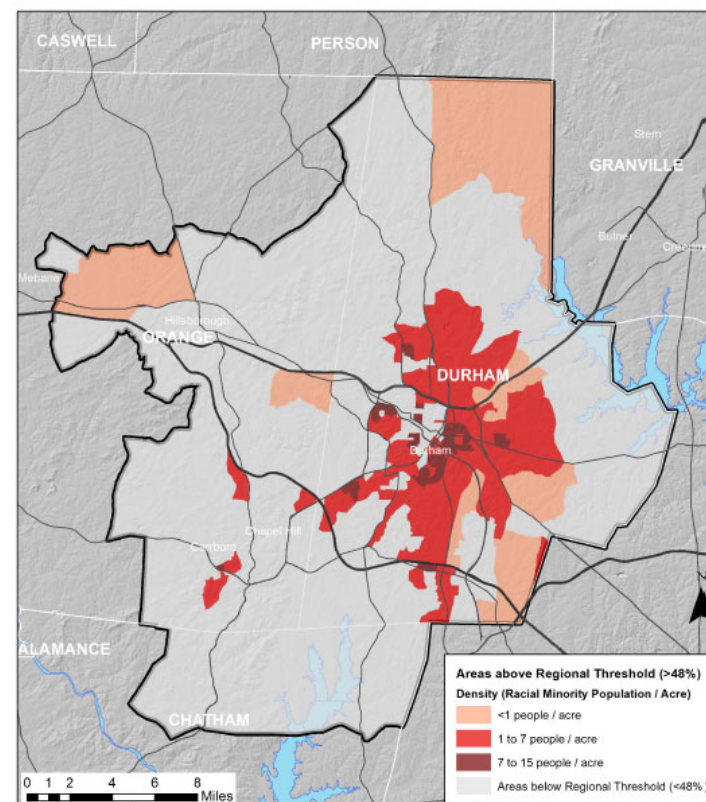
| Row # | EJ Populations  | Total number of CoC Block Groups | Percent of total Block Groups |
|-------|---|----------------------------------|-------------------------------|
| 1     | Any of the three Racial Minority characteristic (a, b or c)               | 125                              | 53%                           |
| 1a    | Racial Minority Populations (total only)                                  | 97                               | 41%                           |
| 1b    | Hispanic/Latino Ethnicity Origins Populations Only                        | 83                               | 35%                           |
| 1c    | Black Populations Only  | 41                               | 17%                           |
| 2     | Elderly Populations   | 88                               | 37%                           |
| 3     | Limited English Proficiency Households                                    | 86                               | 37%                           |
| 4     | Low-Income Households   | 52                               | 22%                           |
| 5     | Zero Car Households   | 83                               | 35%                           |
|       | Averaged Percent of Total Block Groups (sum of Col D (1,2,3,4 and 5) / 5) |                                  | 37%                           |

Table 3.3: Summary of Overlapping CoC Block Groups

| Number of Overlapping Communities of Concern (CoC) | Number of Block groups that contain the number of overlaps in Column A |
|--|--|
| 0 overlap (1 CoC)                                  | 81   |
| 1 overlap (2 CoCs)                                 | 58   |
| 2 overlaps (3 CoCs)                                | 39   |
| 3 overlaps (4 CoCs)                                | 28   |
| 4 overlaps (5 CoCs)                                | 5  |
| <b>Total</b>                                       | <b>209</b>   |



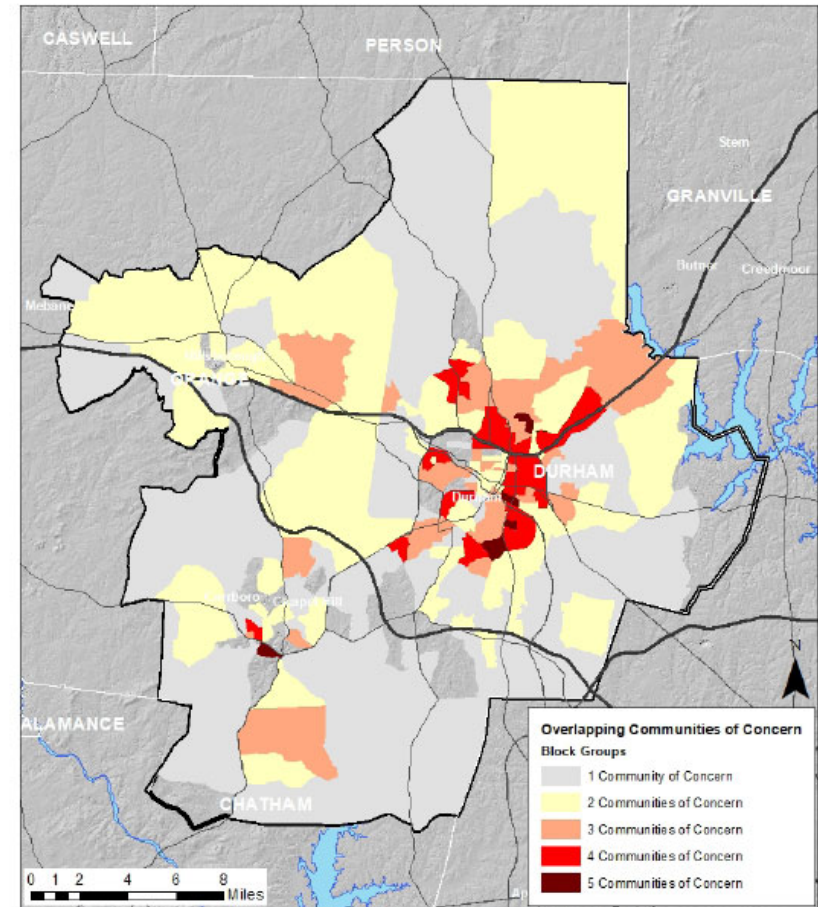
**Map 3.5: Percent of Population: Elderly (65 Years of Age or Older)**  
Census Block Groups where percentage of population of age 65 years and above is greater than 13.3%.



**Map 3.2: Percent of Population: Racial Minority**  
Census Block Groups where percentage of racial minority population is higher than the regional threshold of 48%.

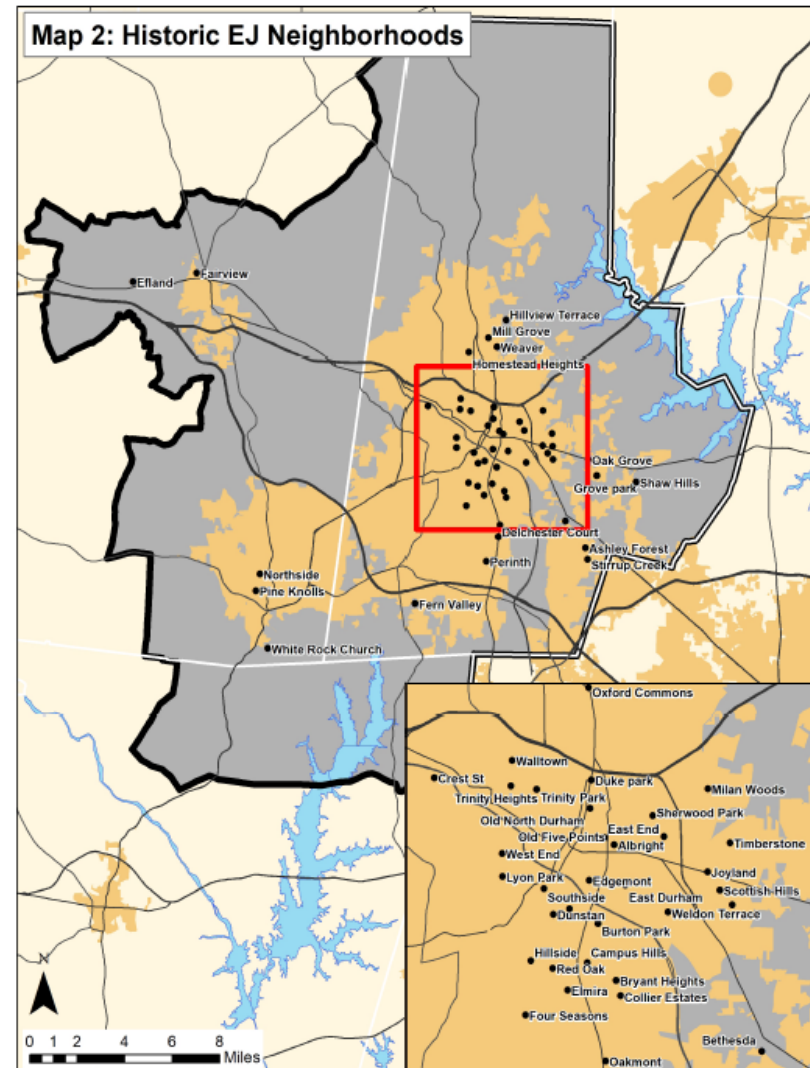


# Overlapping Communities of Concern



**Map 3.9: Overlapping Communities of Concern in the DCHC MPO Area**  
Census Block Groups with one or more Communities of Concern.

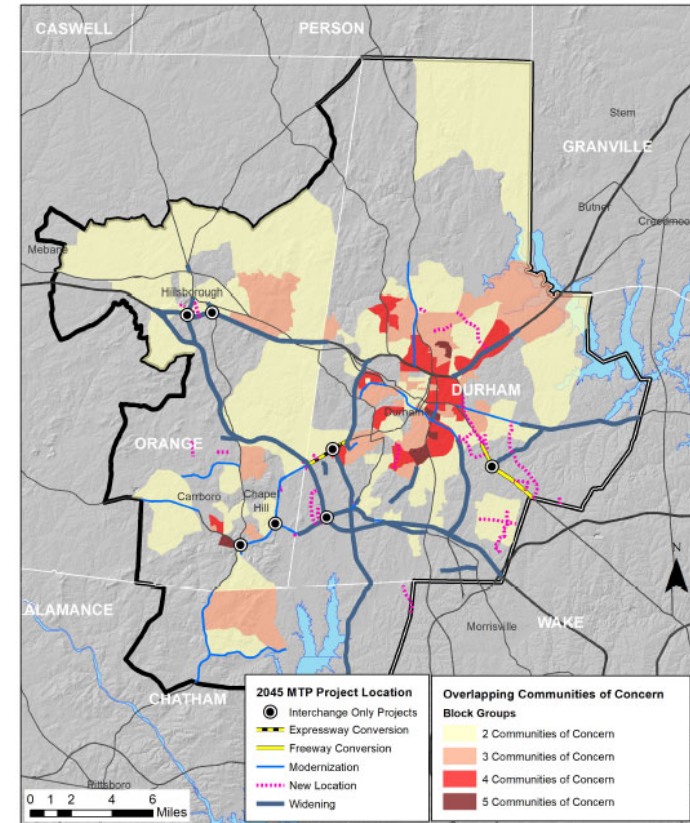
# Historic EJ Neighborhoods



# Analysis of DCHC's Major Planning Activities

## EJ analysis of distribution of projects

- 2045 Metropolitan Transportation Plan
- FY 2018-2027 Transportation Improvement Program
- FY 2019-2020 Unified Planning Work Program



Map 4.1: Location of MTP Highway Projects  
Relative to Overlapping Communities of Concern Block Groups

**Table 4.1: 2045 MTP Project Distribution**

| Type of MTP Project         | Located within Overlapping CoC Block Groups | Total number of project segments or total Project Funding in DCHC MPO Area | Percent of Total (Threshold for measuring projects is 37%) |
|-----------------------------|---|--|--|
| Interchange Projects        | 5   | 7  | 71%  |
| Interchange Project Funding | \$158 million                               | \$299 million  | 53%  |
| Highway Project Miles       | 118   | 211  | 56%  |
| Highway Project Funding     | \$1.28 billion                              | \$3.05 billion   | 42%  |
| Transit Project Miles*      | 28  | 49   | 58%  |

\*A methodology for geographic distribution of transit route project costs was not included as part of the 2045 MTP. Thus, the geographic distribution of funding for transit route service projects could not be compared to locations of EJ communities of concern as part of this EJ report.

All measures of interchange, highway and transit investments in communities of concern exceeded the 37% threshold.

# Conclusions and Recommendations

- Although projects may be equitably distributed, communities may not necessarily experience benefits and burdens equitably
  - Suggests more detailed benefit/burden analysis for future versions of the report
- Adjust EJ methodology as DCHC region grows, changes demographically, and as best practices evolve
- Adjust Public Involvement Policy to address future demographic changes
- Tailor outreach strategies to the values, traditions, and histories of communities and populations that exist in the DCHC area
- Consider creating project specific EJ advisory committees
- Update EJ report as new MTPs are adopted