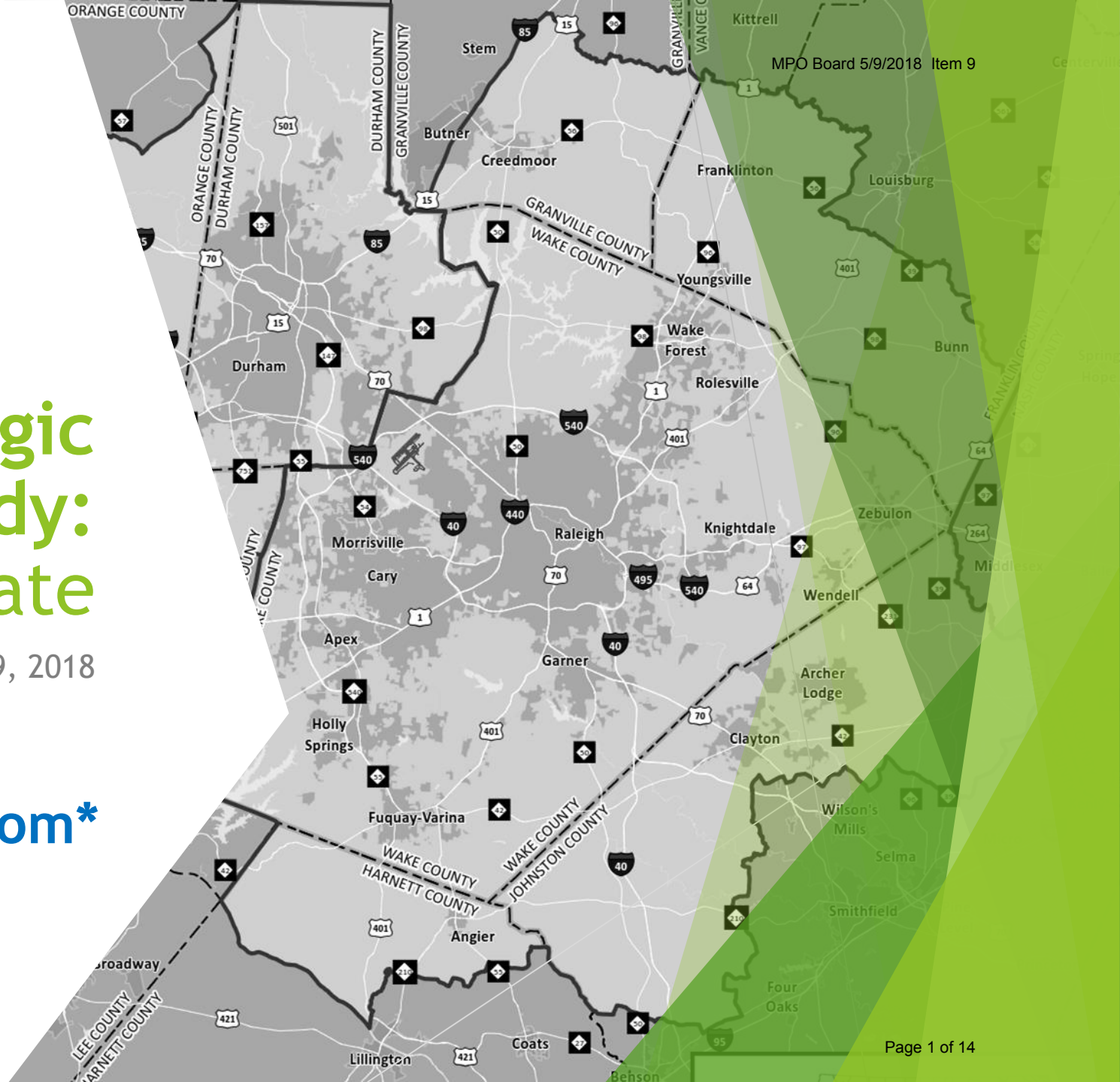


# Triangle Strategic Tolling Study: Update

May 9, 2018

[www.TriangleTollingStudy.com](http://www.TriangleTollingStudy.com)\*

\* For more detailed copy of this presentation  
and copy of Best Practices report





# Study Overview

- ▶ The Triangle Region is growing rapidly and to stay competitive with other regions, a study is being conducted to:

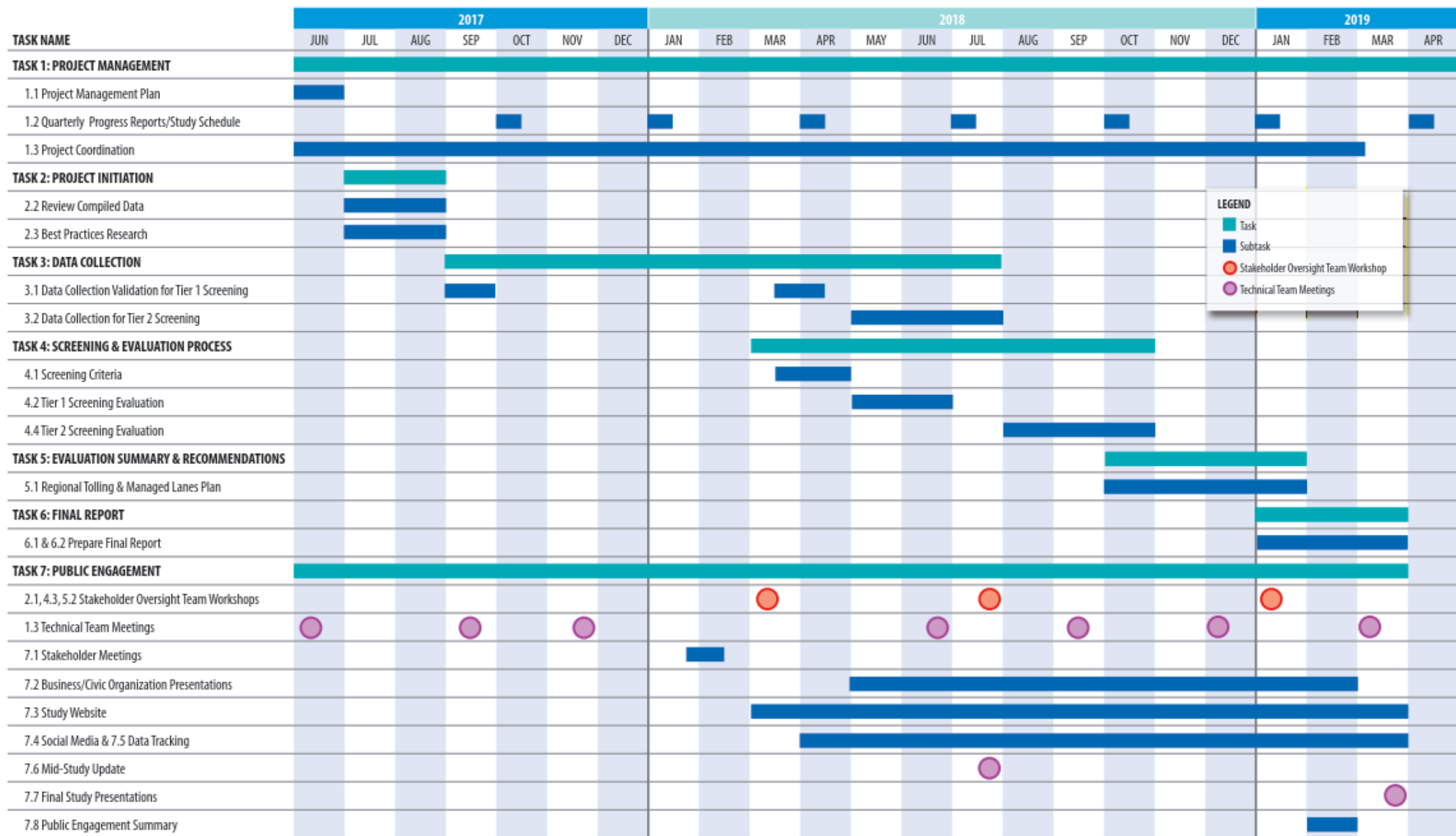
Evaluate the regional transportation network

Determine if toll lanes and/or managed lanes are applicable to the Triangle Region

Develop a toll lane and/or managed lane strategy to address current and future capacity needs with funding deficiencies

# Triangle Toll Feasibility Study Schedule

MPO Board 5/9/2018 Item 9



**LEGEND**

- Task
- Subtask
- Stakeholder Oversight Team Workshop
- Technical Team Meetings

Revised February 14, 2018



# What About the Income Equity of Tolls?

- ▶ Using policies to address effect of tolling on low income travelers ('income equity')
  - ▶ Low income incentive programs
  - ▶ Link to transit fare discount qualifications
  - ▶ Carpool incentives
  - ▶ Enhanced / targeted investments in transit service
  - ▶ Expanded options for electronic toll participation
  - ▶ Redistribution of net revenue

*Studies have shown that low income drivers use priced facilities and benefit significantly from improved travel time and travel time reliability*

# Best Practice Highlights - Equity Considerations

## Common Equity Objections

- Paying for what has traditionally been “free”
- Paying twice (motor fuel taxes + tolls)
- Disproportionate distributions of costs/benefits

## Equity Analysis & Framework

- Income Equity
- Modal Equity
- Geographic Equity

## Potential Mitigation Strategies

- Revenue Allocation
- Toll Discounts
- Toll Transit Credits
- Carpool Loyalty Program

# Best Practice Highlights - Operating Policy

- ▶ Electronic Toll Collection (ETC)
- ▶ Pricing Models
- ▶ Exemptions & Vehicle Eligibility
- ▶ Building Consensus
- ▶ Public Outreach
- ▶ Use of Revenue
- ▶ Benefits of Express Lane Bus Service
- ▶ Design Considerations



Copy of full report at:  
<http://triangle tolling study.com/resources/>

# Stakeholder Meetings Overview

- ▶ Seven meetings involving 1, 2 or 3 interviewees
- ▶ Meeting attended by 6 elected officials and representatives of RTA and GoTriangle
- ▶ Meeting attended by 9 staff representatives of MPOs, NCDOT & other relevant groups



# QUESTION: Current Community Issues Potentially Impacting the Perception of Tolling/Express Toll Lanes in the Triangle

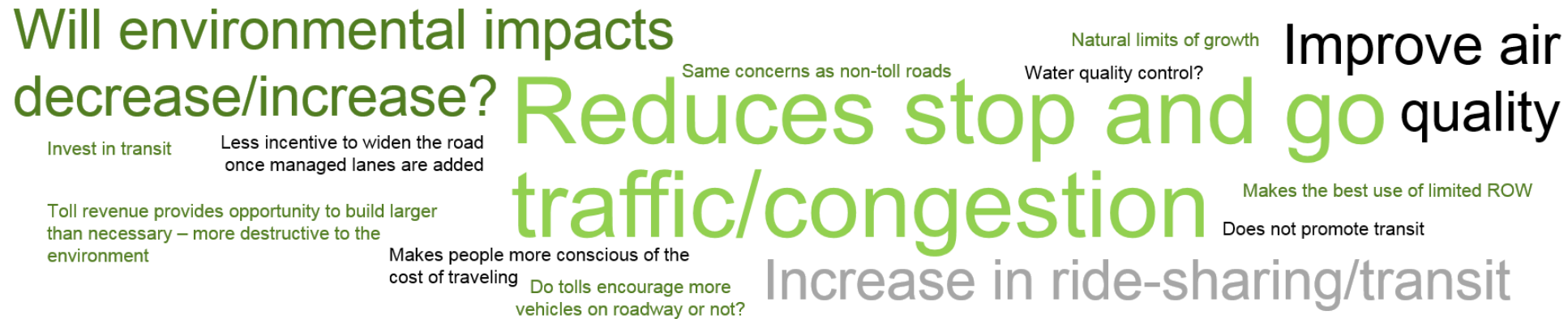


# QUESTION: Mitigating Identified Impacts or Problems

Enhance Transit Service/Rideshare  
Free Use for Transit Vehicles  
Different Transponders/Subsidies for Low Income Users  
Rebate/Refund for Economically Disadvantaged Populations  
Use revenue to improve transit and bike/ped projects

Clearly Communicate Information  
Find Ways to Offset Impacts  
Free/Reduced Pricing  
Bring Communities in Early  
Transparency of Impacts  
Reduce Barrier by Free HOV2  
Allow Occasional Free Use

# QUESTION: Views on Potential Environmental Benefits/Concerns



# QUESTION: Biggest Opportunities For Improving the Perception of Tolling During the Triangle Strategic Tolling Study



## Outreach & Education

- Transparency (cost of tolls, toll lane revenue, positives of Triangle Expressway, tolls based on traffic flow)



## Marketing/Social Media (Reach as Many People as Possible)



## Open Triangle Expressway Early to Demonstrate Value



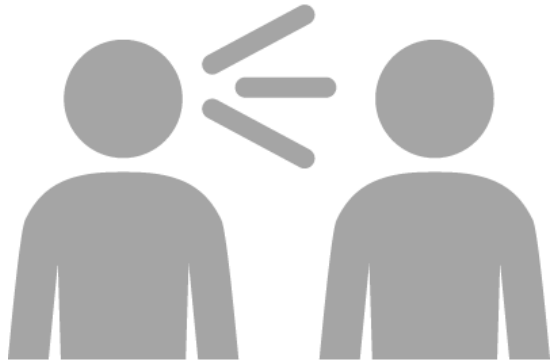
## Identify Options for Beneficial Tradeoffs (Mitigation of impacts to low income populations, environmental sustainability, supporting transit)

## Next Steps

- ▶ Develop screening criteria (performance measures)
- ▶ Complete Tier 1 screening evaluation
  - ▶ Evaluates corridors based on toll/managed lanes projects previously programmed, congestion, high crash locations, engineering considerations, transit priority corridors, etc.
  - ▶ Identifies corridors needing congestion intervention through tolling/managed lanes strategies
- ▶ Present update and Tier 1 screening results to MPO Boards early August
- ▶ Continue public engagement (website, social media, etc.)



# More Information?



- ▶ **Andy Henry**

DCHC MPO

Andrew.henry@durhamnc.gov

(919) 560-4366

- ▶ **Lynn Purnell, PE, ENV SP**

WSP

Lynn.Purnell@wsp.com

(704) 342-5405

[www.TriangleTollingStudy.com](http://www.TriangleTollingStudy.com)

TRIANGLE STRATEGIC  
TOLLING STUDY