



# **Durham-Orange Light Rail Transit Project**

DCHC MPO Technical Committee  
May 23, 2018

# Staying on Track

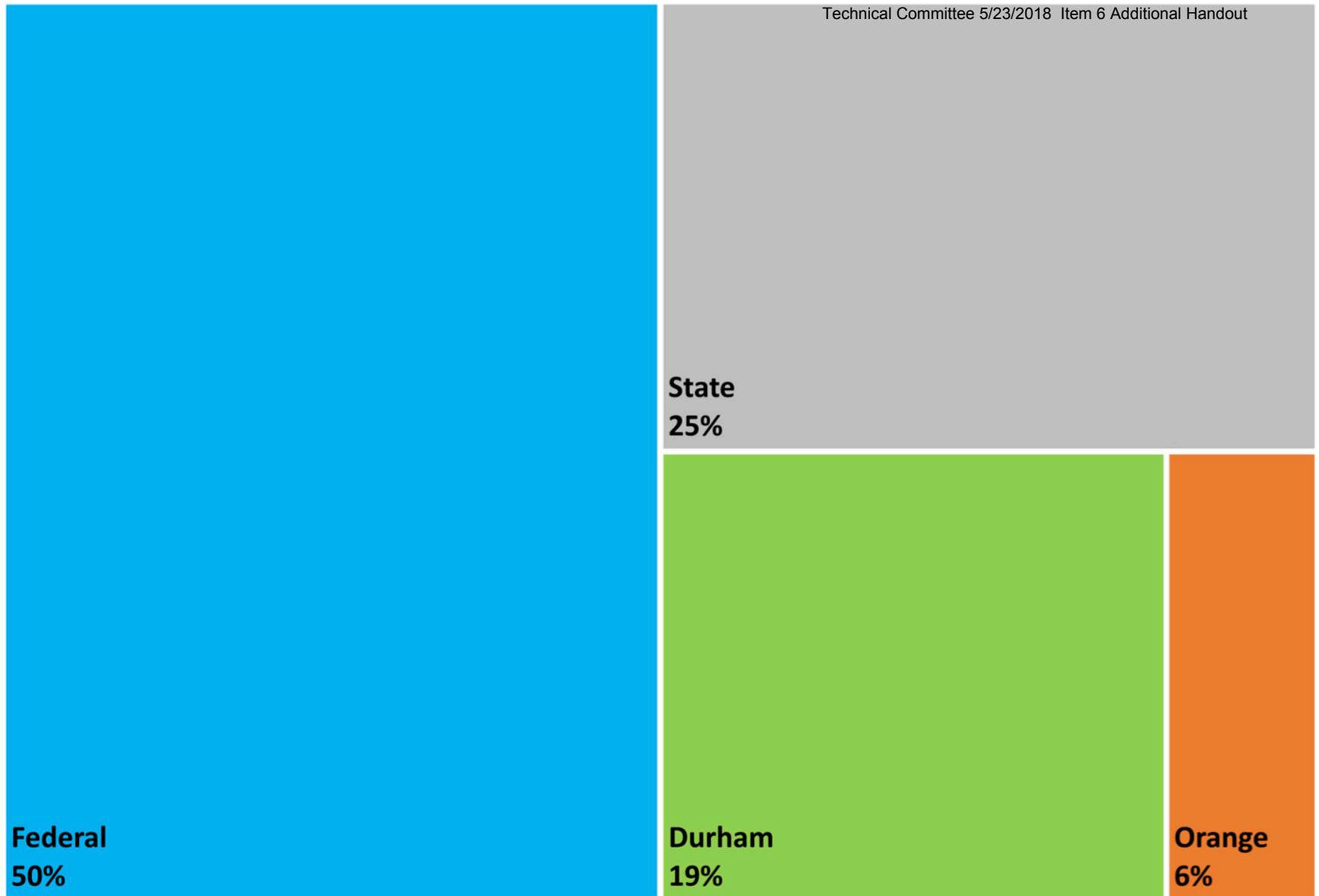
- We're still on track for a federal investment of over a billion dollars in our region.
- To stay on track, FFGA critical tasks must be completed by the end of 2018.
- Design, cost, budget, and schedule all play roles in determining FFGA outcome.
- Third-party coordination creates significant schedule risk.

# Critical Agreements

- To remain eligible for FY19 FFGA, all critical commitments and agreements must be obtained by the end of 2018.
- Critical agreements include universities, utilities, Durham VA, and other partners.
- While local officials must initiate the process, Durham VA Medical Center MOU requires approval at the federal level.

# Light Rail Funding Sources - Original Plan

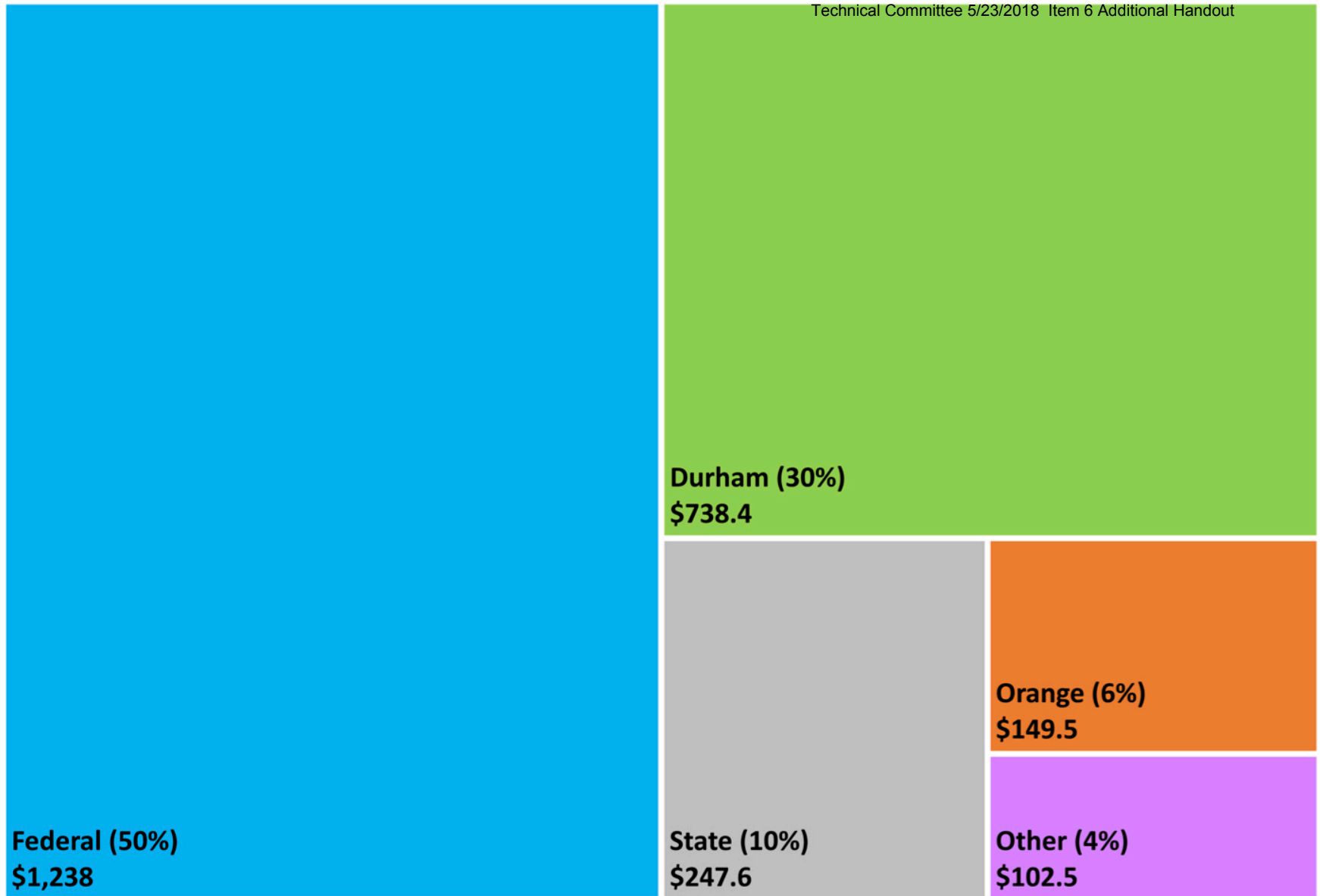
Technical Committee 5/23/2018 Item 6 Additional Handout





# Light Rail Funding Sources in Millions of Dollars

Technical Committee 5/23/2018 Item 6 Additional Handout



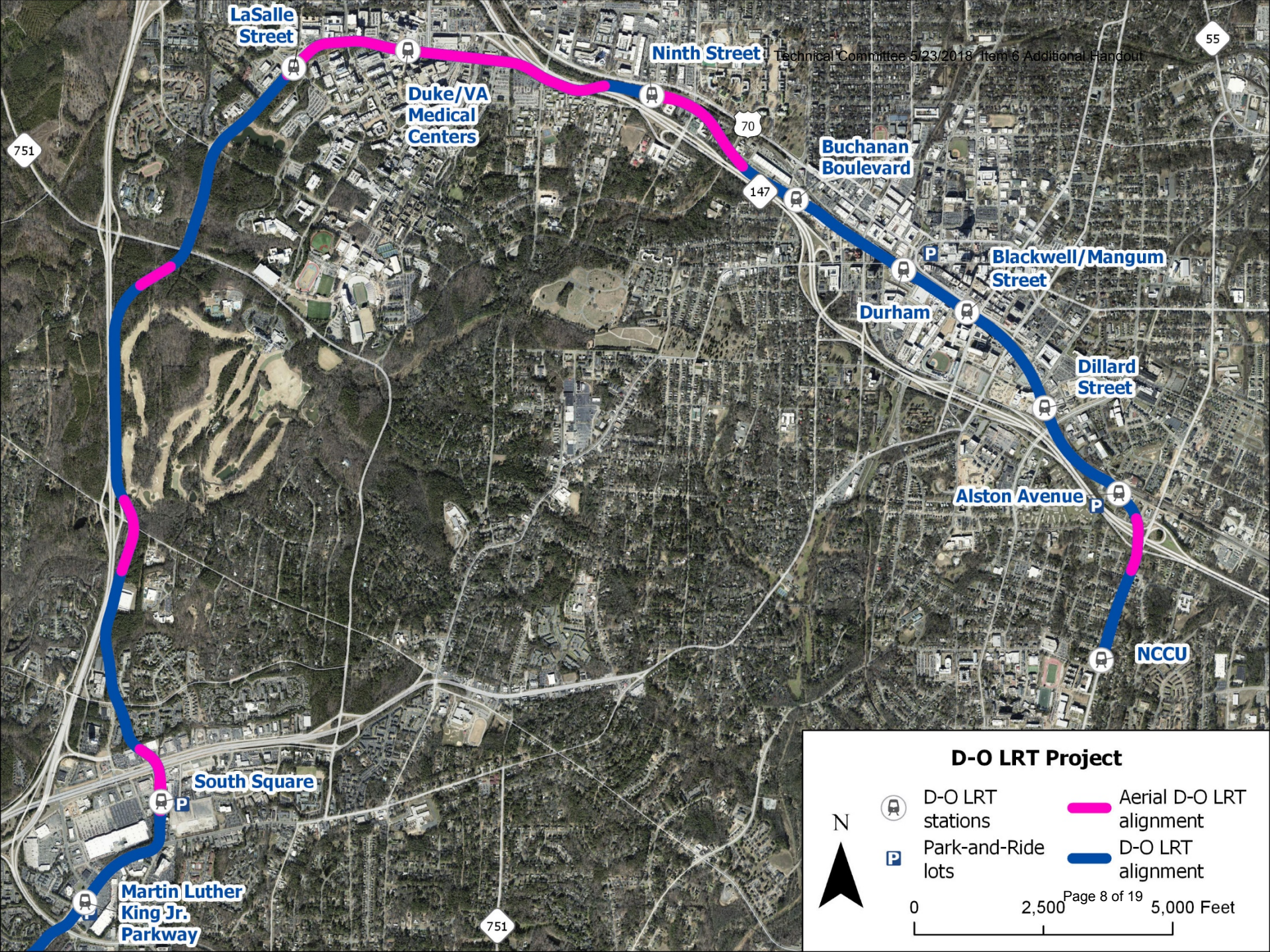
# Estimated Expenses as of March

Expense Category	Budget	March Expenses	Prior Expenses	Total Expenses to Date	Budget Balance
Construction	\$1,499 M	-	-	-	\$1,499 M
Right of Way and Land	\$225 M	\$0.1 M	\$4.8 M	\$4.9 M	\$220 M
Vehicles	\$139 M		-	-	\$139 M
Professional Services	\$358 M	\$5.4 M	\$72.9 M	\$78.3 M	\$280 M
Unallocated Contingency	\$168 M	-	-	-	\$168 M
Finance Charges	\$88 M	-	-	-	\$88 M
<b>Total Project Cost</b>	<b>\$2,476 M</b>	<b>\$5.5 M</b>	<b>\$77.7 M</b>	<b>\$83.2 M</b>	<b>\$2,393 M</b>





# Erwin Road Challenges

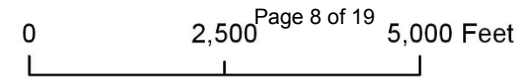
- Emergency access to medical centers is a top priority.
- Unique utilities beneath the road create design and coordination challenges.
- Design team is pursuing stations near LaSalle and the Medical Centers.
- Any costs associated with engineering challenges must be contained with the budget, which is set.



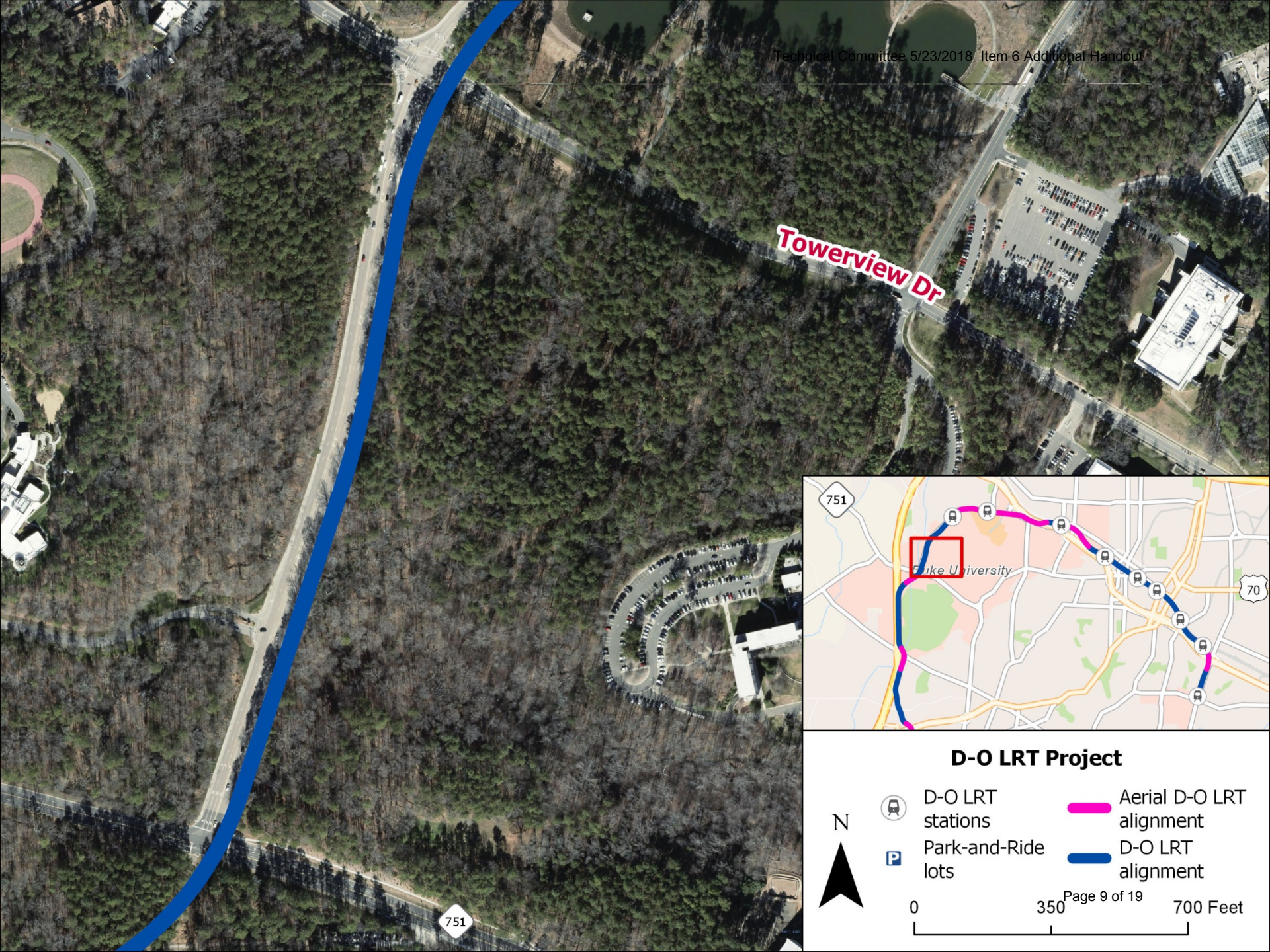


### D-O LRT Project

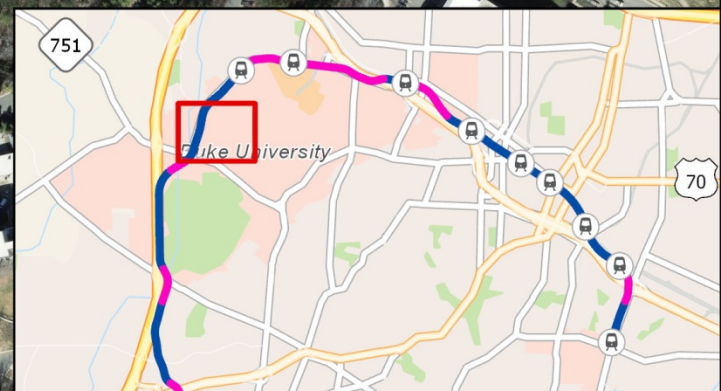
-  D-O LRT stations
-  Park-and-Ride lots
-  Aerial D-O LRT alignment
-  D-O LRT alignment







Towerview Dr



### D-O LRT Project



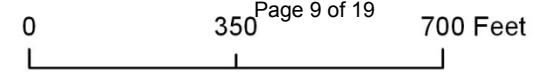
D-O LRT stations



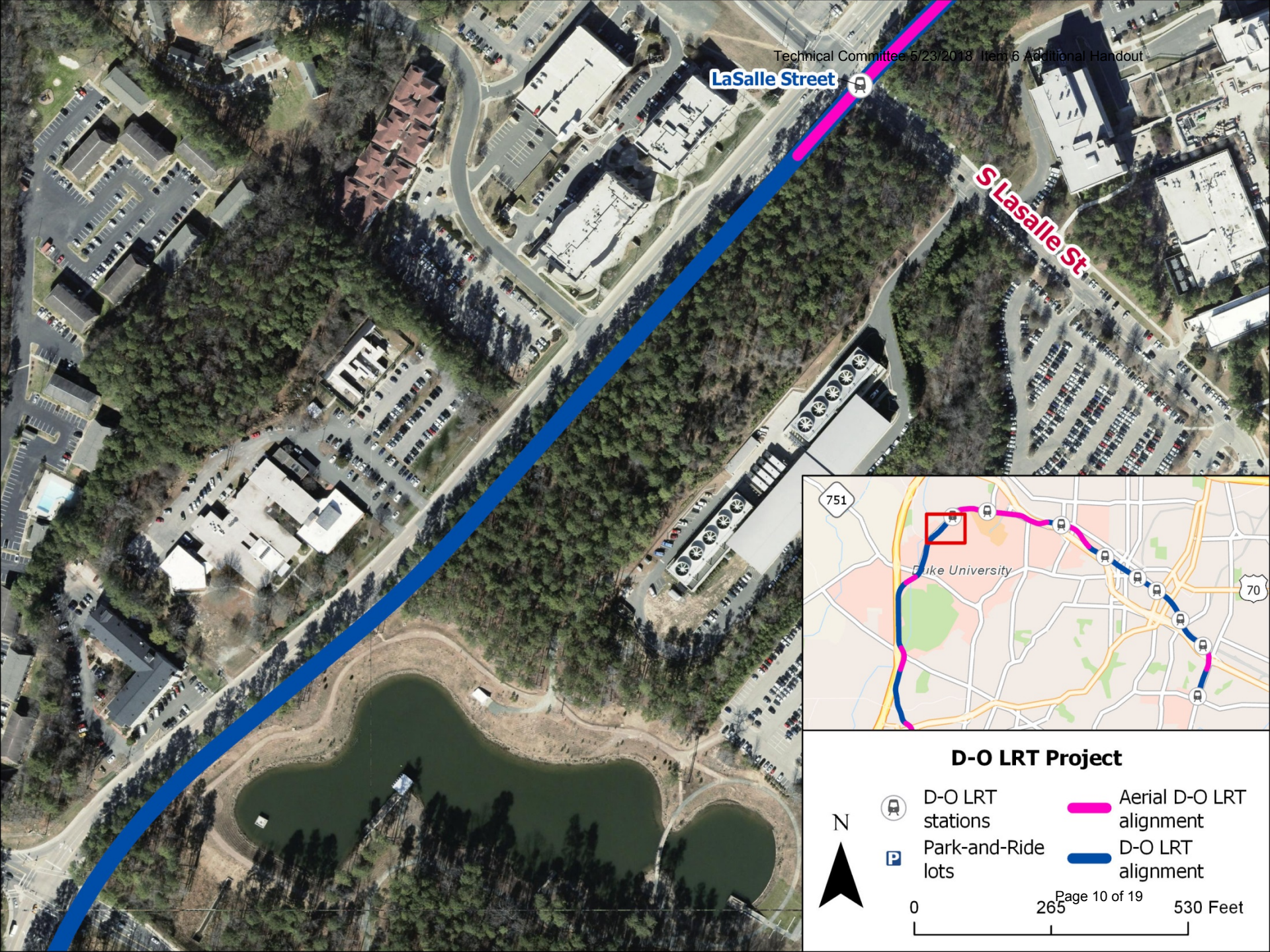
Park-and-Ride lots

Aerial D-O LRT alignment

D-O LRT alignment

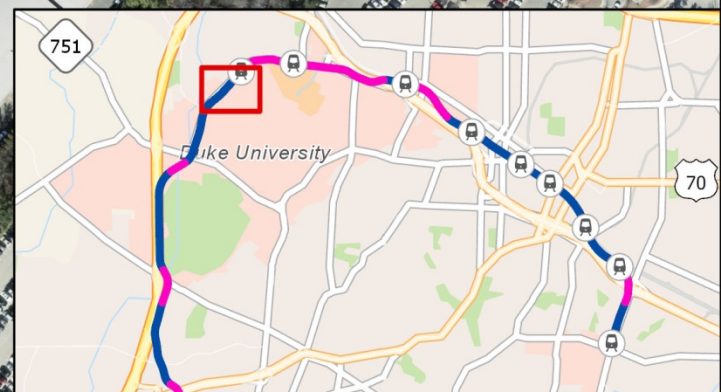






LaSalle Street

S Lasalle St



### D-O LRT Project



D-O LRT  
stations



Park-and-Ride  
lots

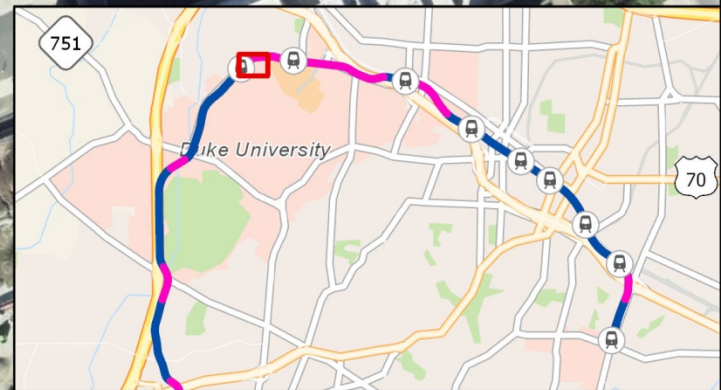
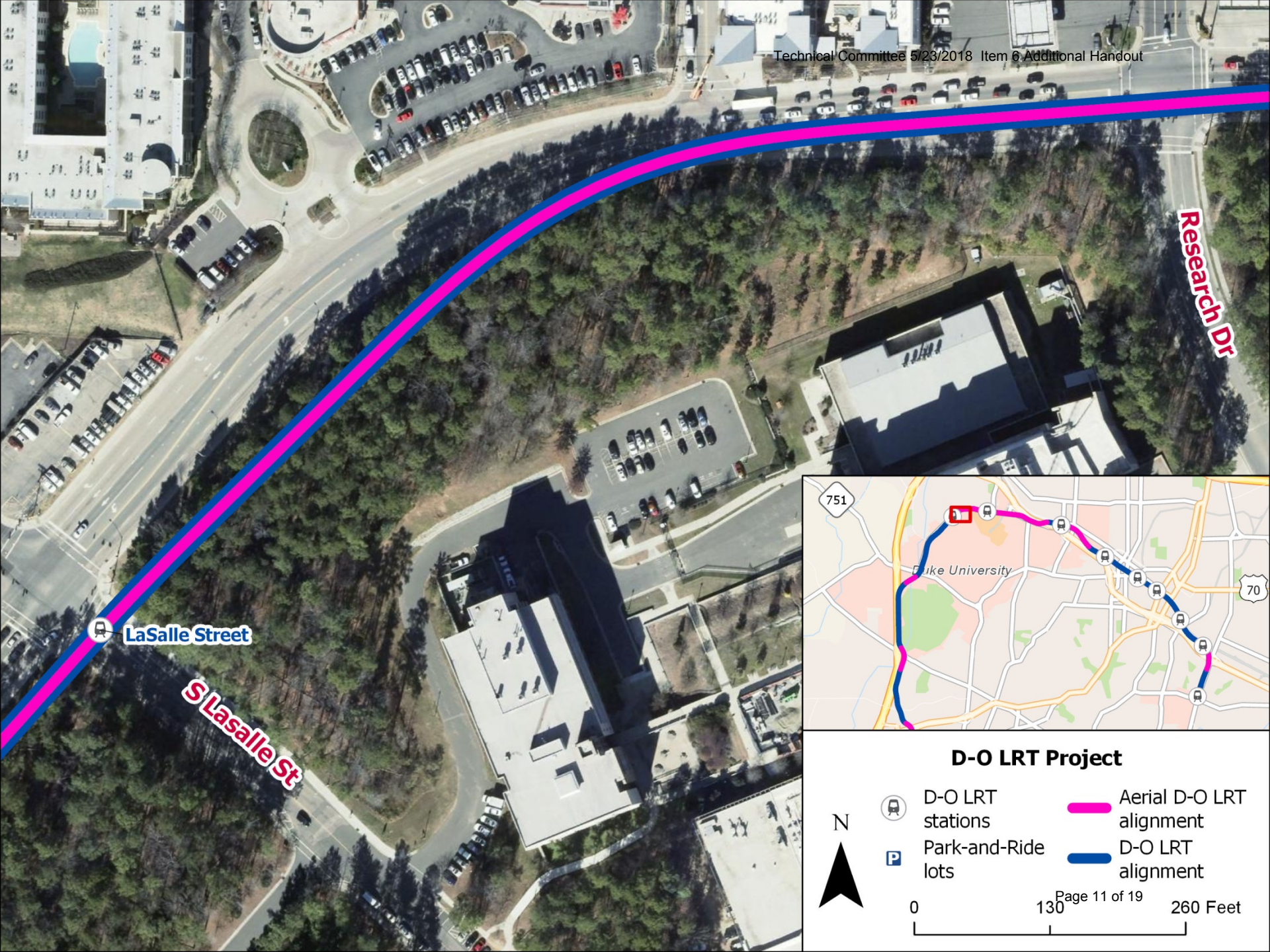
Aerial D-O LRT  
alignment

D-O LRT  
alignment



0 265 530 Feet





### D-O LRT Project




D-O LRT  
stations



Park-and-Ride  
lots

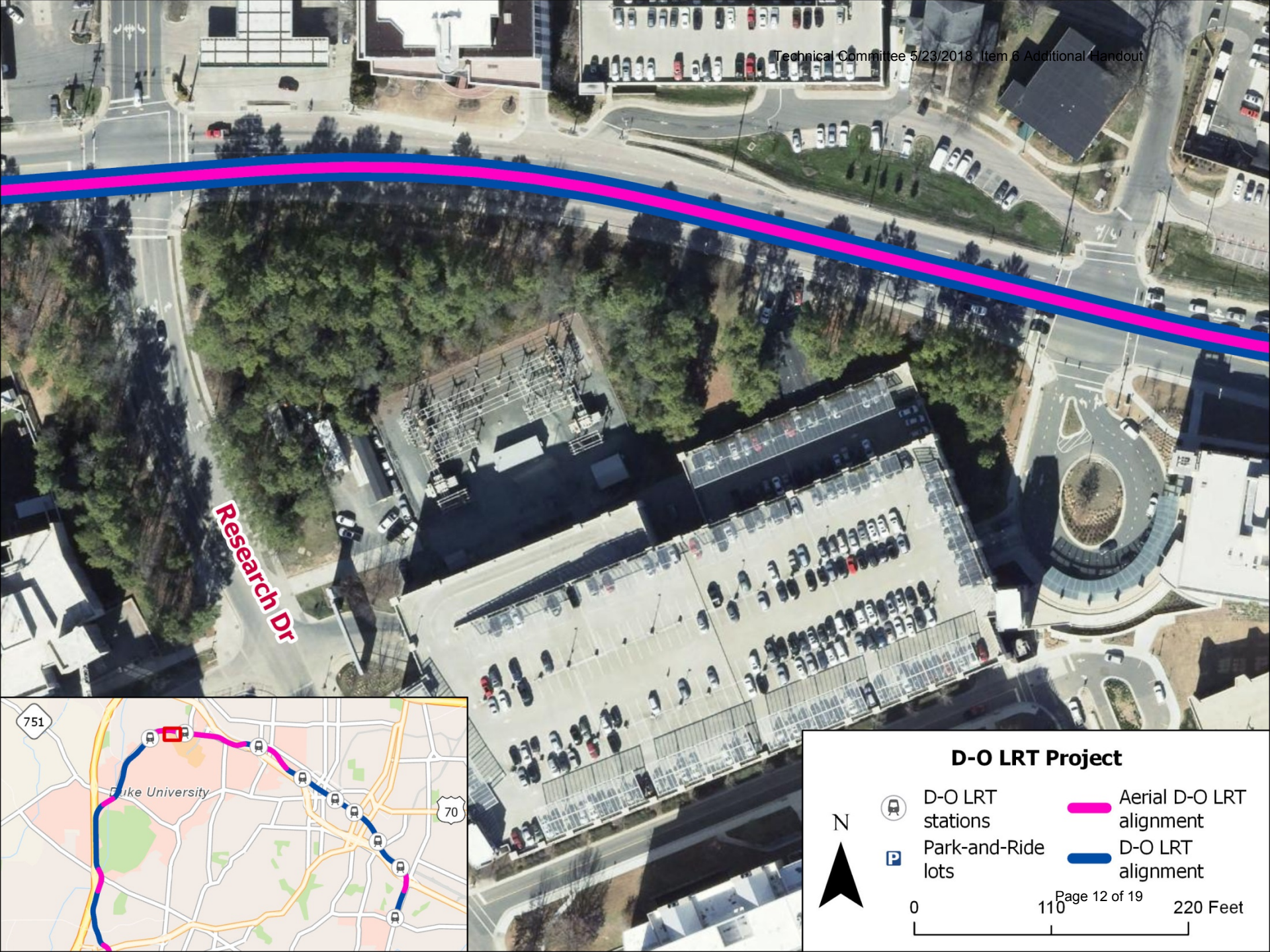
 Aerial D-O LRT  
alignment

 D-O LRT  
alignment

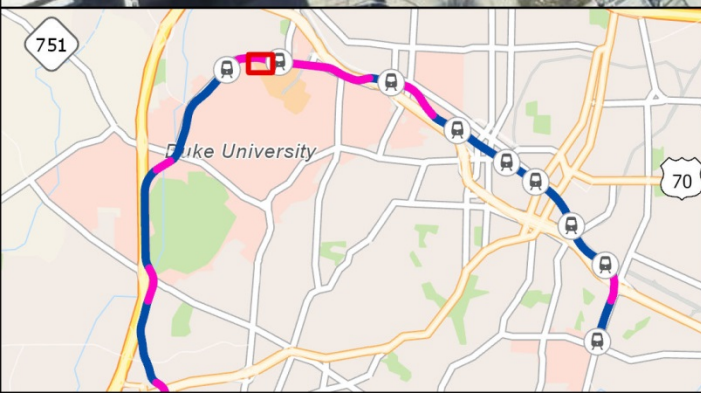


0 130 260 Feet








Research Dr





### D-O LRT Project

 D-O LRT stations

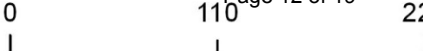
 Park-and-Ride lots

 Aerial D-O LRT alignment

 D-O LRT alignment



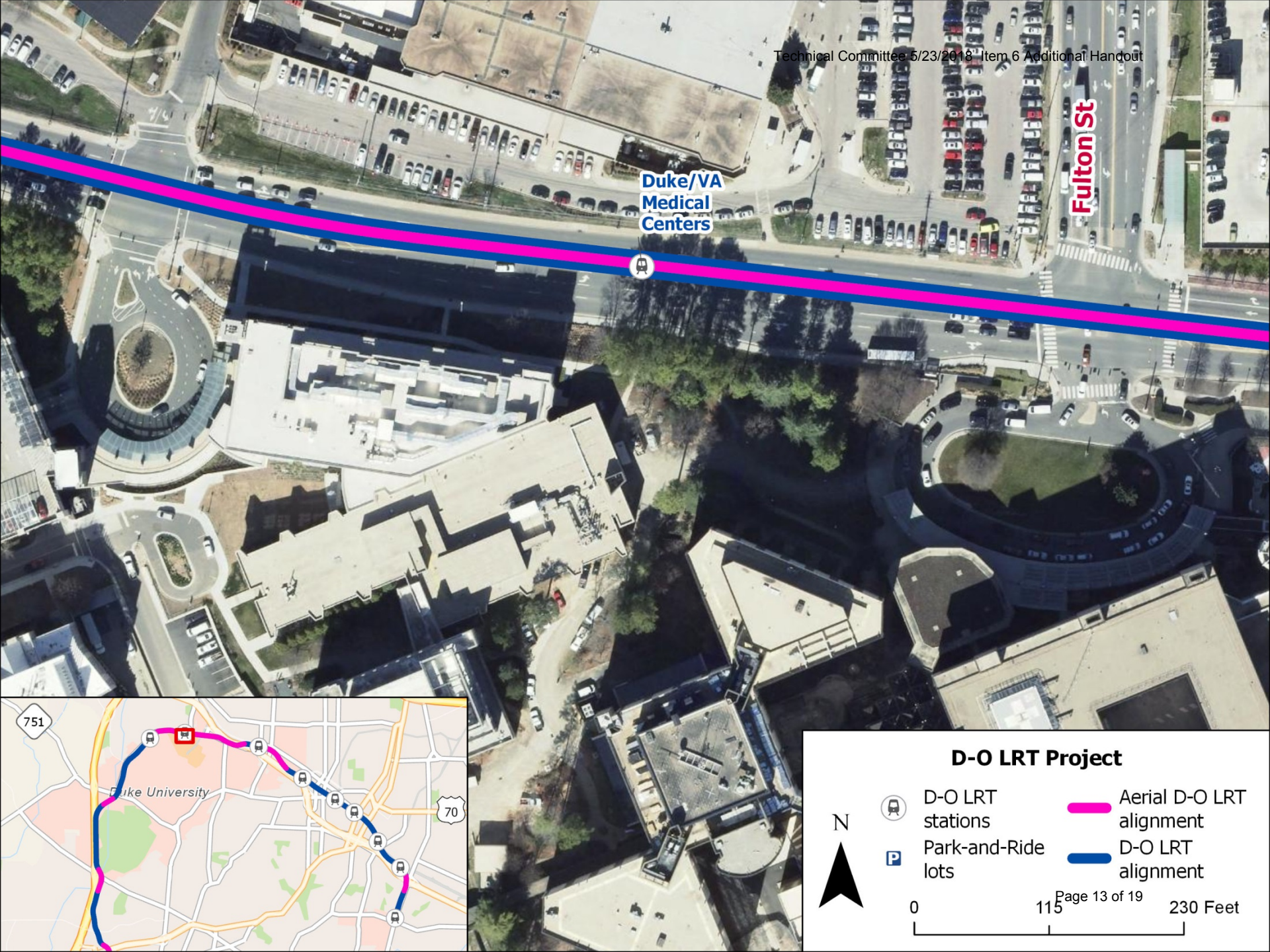
N



0 110 220 Feet

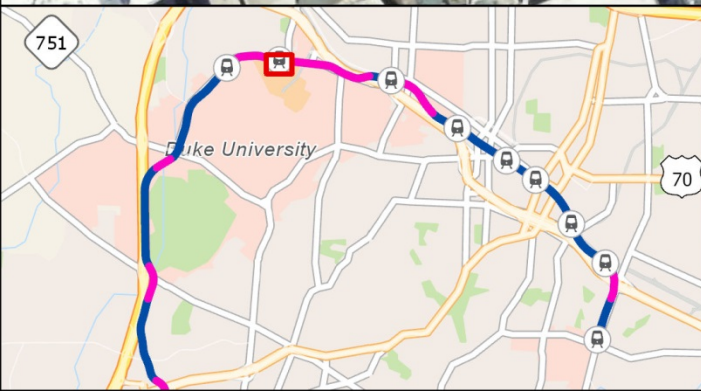
Page 12 of 19





Duke/VA  
Medical  
Centers

Fulton St



### D-O LRT Project



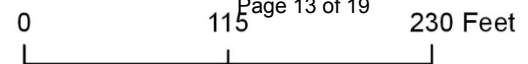
D-O LRT  
stations



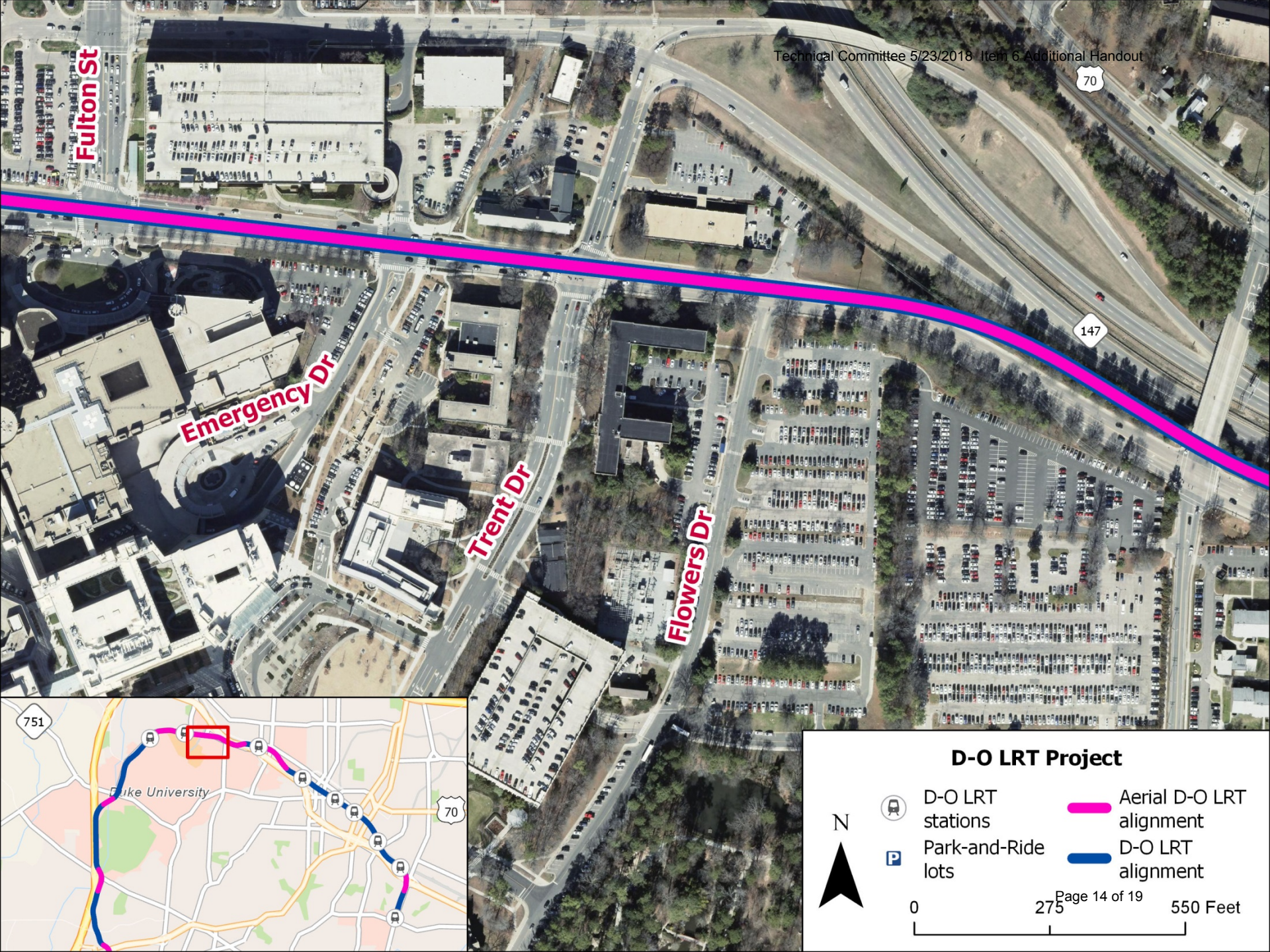
Park-and-Ride  
lots

Aerial D-O LRT  
alignment

D-O LRT  
alignment









# Pettigrew Street Challenges

- Any costs associated with engineering challenges must be contained with the budget, which is set.
- Coordination with Railroads includes FFGA critical agreements.
- Downtown Durham grade crossings present design/coordination challenges.

# 50% Design Review and Cost Estimates

- 50% cost estimates will be finalized later this summer.
- FTA may require additional contingency following risk management workshop.
- We are continuing to work with our partners on 50% design reviews.

# Supplemental Environmental Assessment

Technical Committee 5/23/2018 Item 6 Additional Handout

- GoTriangle is completing a supplemental environmental assessment of proposed engineering updates.
- Later this summer the assessment will be released for public comment.
- GoTriangle will work with the FTA to ensure compliance and address impacts.

# Economic Growth

The light rail project doesn't just belong to Durham and Orange Counties. It shows incredible potential for short and long-term economic growth in the Triangle and across North Carolina. We need to access our networks to get the word out.

# Statewide Impact

Technical Committee 5/23/2018 Item 6 Additional Handout

- How have major transit investments benefited Charlotte and Mecklenburg County?
- How will major transit investments benefit Wake County and even Johnston and Alamance Counties?
- How can transit investments statewide promote productivity, efficiency, and sustainable growth?

# Value Chain Analysis

- Currently, there are 27 members of the American Public Transportation Association (APTA) in North Carolina. These are major suppliers, designers, and manufacturers of transportation technology.
- These corporations include ABB in Cary, IMPulse in Mount Olive, Heico in Hickory, Saft America in Valdese, and Huesker in Shelby.
- According to the Department of Transportation, there are over 600 material vendors in North Carolina involved in the transit manufacturing supply chain.
- GoTriangle is currently exploring an updated economic impact study that includes value chain analysis.



# Questions