



NORTH CAROLINA
Department of Transportation

Project Scoping Process Express Design Evaluation

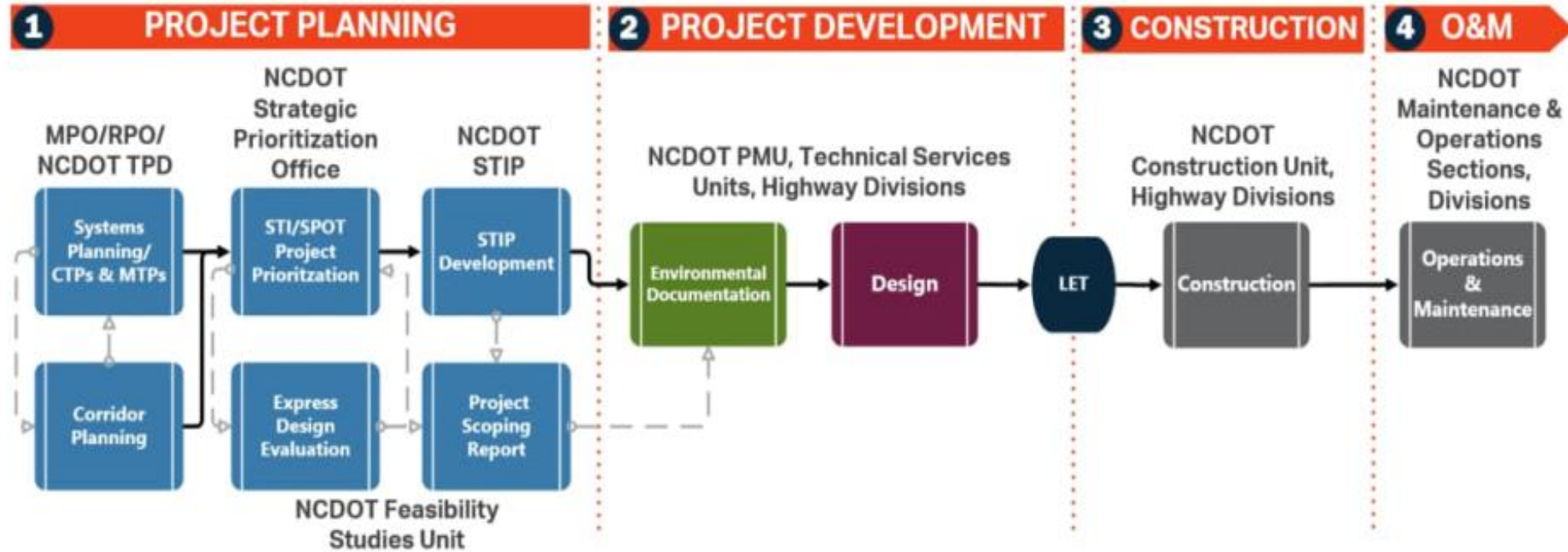
Derrick Lewis

Feasibility Studies Unit, Division of Planning and Programming-NCDOT

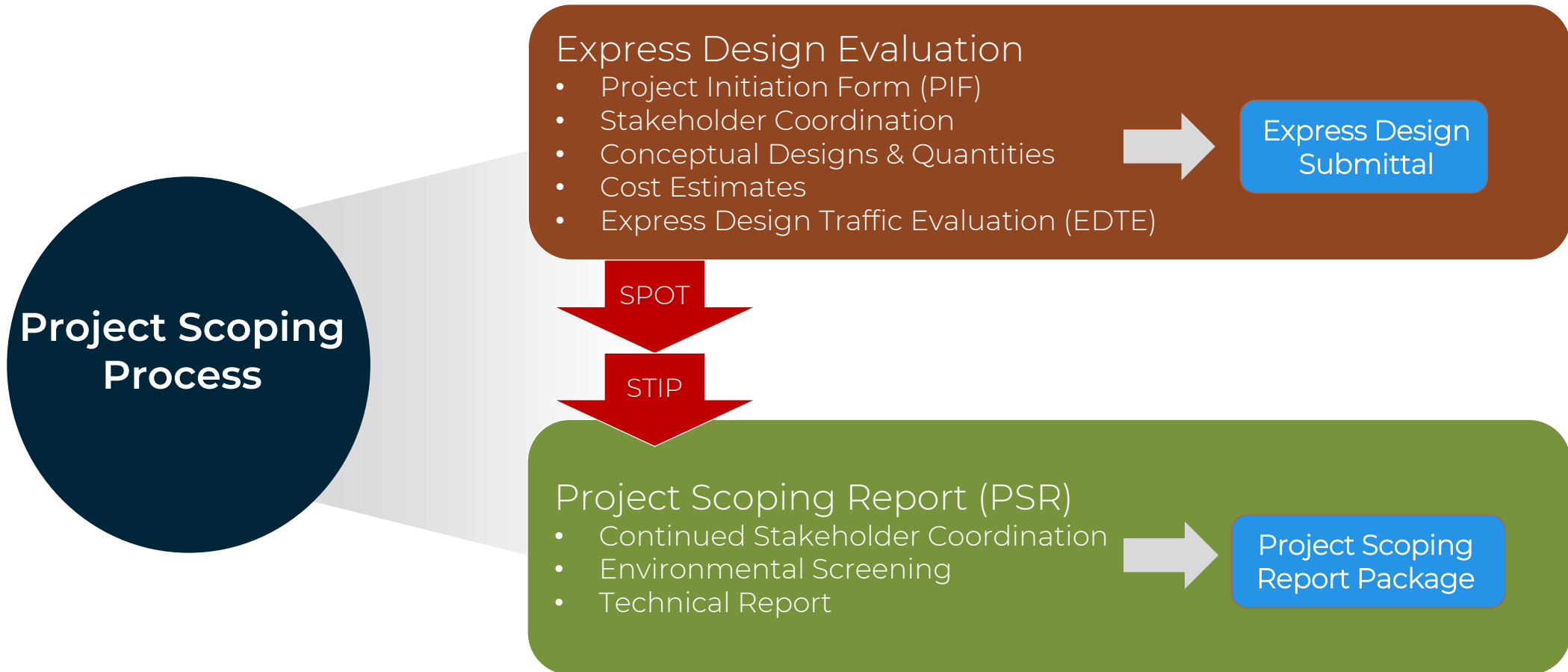
March 2024

Connecting people, products and places safely and efficiently with customer focus, accountability and environmental sensitivity to enhance the economy and vitality of North Carolina

Overview

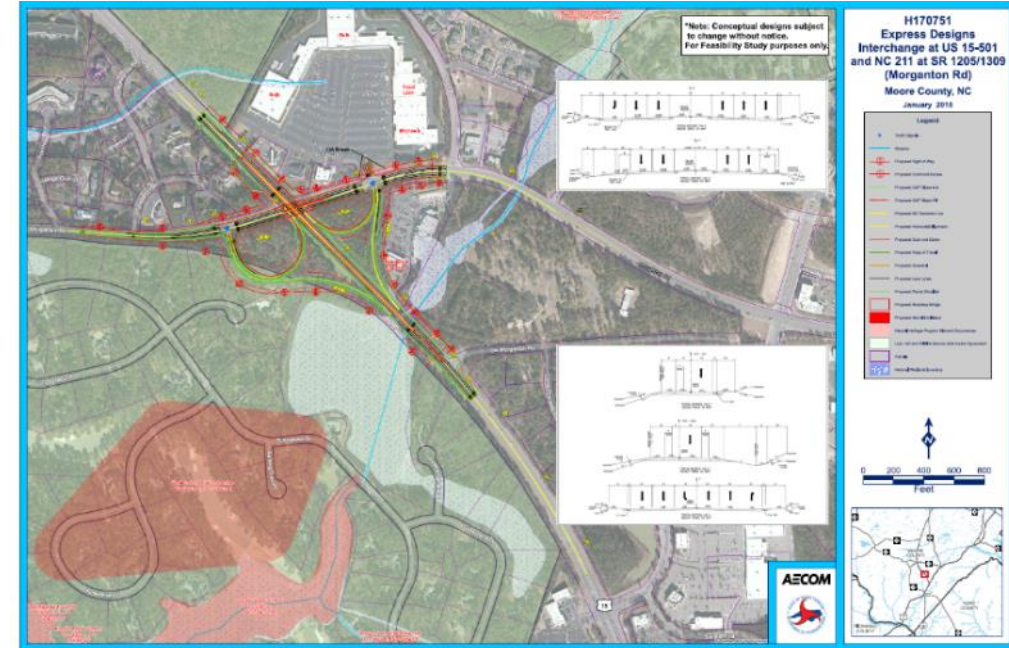


Overview



What the Express Design Evaluation **IS**

- ✓ Initial step in the planning and design process for a candidate project
- ✓ Describes the project, estimates preliminary costs, and identifies any potential problems
- ✓ Investigates conceptual design option(s) and prepares costs needed for the prioritization process (SPOT)



AN alternative, not THE alternative

What the Express Design Evaluation is **NOT**



Detailed engineering



In-depth data collection or field studies



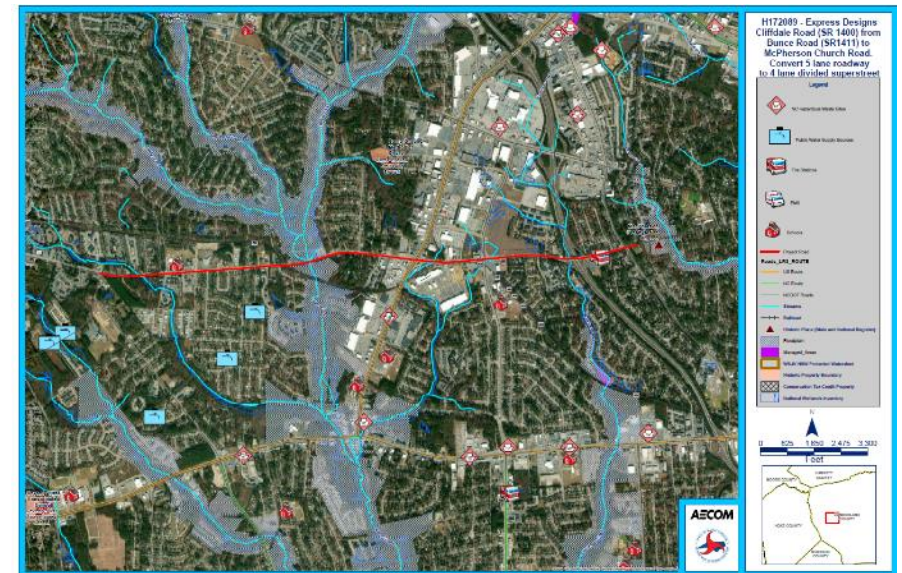
NEPA/SEPA (environmental) compliance documentation



The final word on the ultimate design for the project

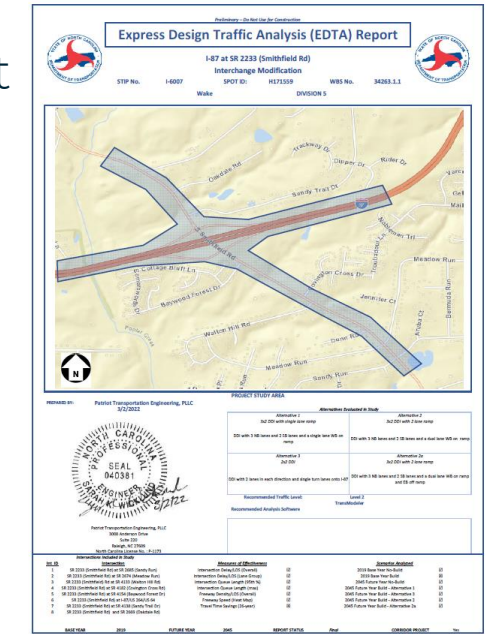
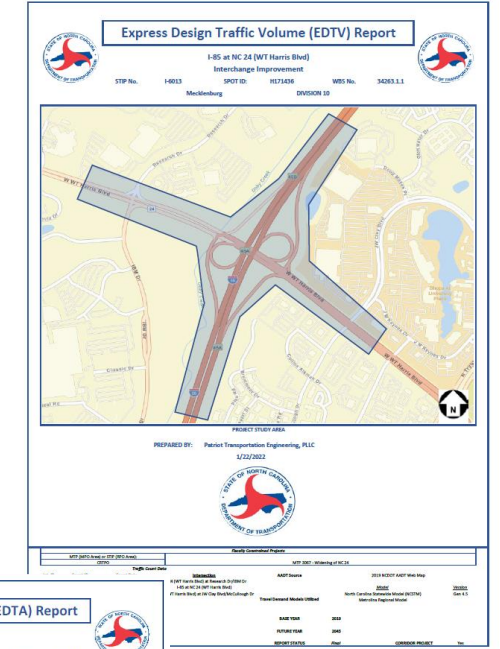
The Express Design Evaluation includes the following:

- Stakeholder Coordination
- Environmental Screening
- Complete Streets Review
- Conceptual Design(s)
- Cost Estimates
 - Construction/ROW/Utilities/ITS
- Constructability/Maintenance of Traffic Narrative
- Traffic Safety Screening
- Initial Hydraulic review
- Preliminary Traffic Analysis (EDTE)



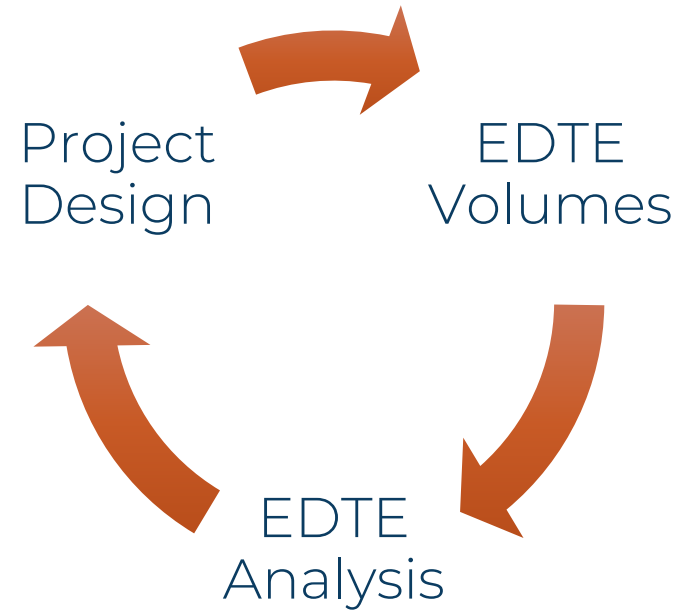
What is an Express Design Traffic Evaluation (EDTE)?

- Component of the Express Design Evaluation
- Utilizes simplified volume development methods to quickly estimate traffic volumes
- Team of experts helps decision makers determine the best alternative(s) for their needs
- Provide for better coordination, designs, and cost estimates early in process



Why is the EDTE Important?

- Evaluates if design will operate at a level consistent with the project goals
- Produces greater certainty in project costs during Prioritization and Programming
- Can eliminate design alternatives (reducing planning and design cost)
- Helps determine the most cost-effective project strategy.



Questions



Thank you!

