

DURHAM • CHAPEL HILL • CARRBORO

**DCHC**

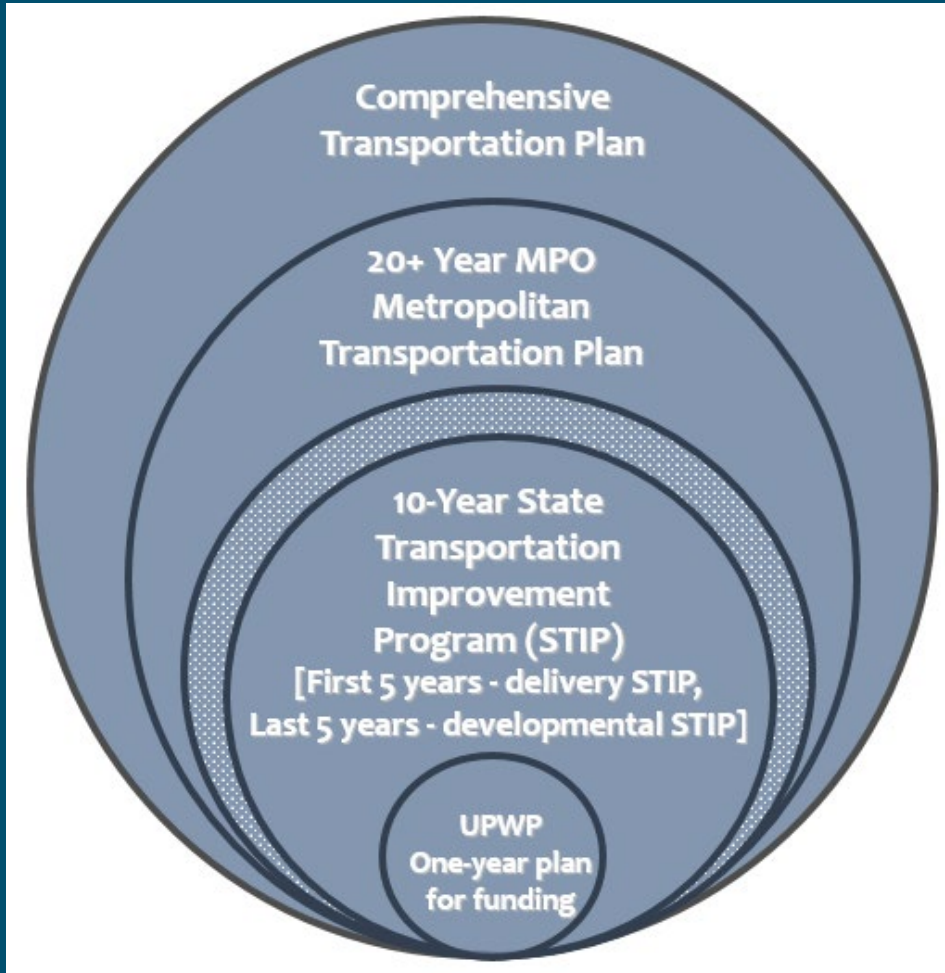
METROPOLITAN PLANNING ORGANIZATION

PLANNING TOMORROW'S TRANSPORTATION

# FY 22-23 Draft Unified Planning Work Program

Maricl Klein | [Maricl.Klein@durhamnc.gov](mailto:Maricl.Klein@durhamnc.gov) | January 12, 2022

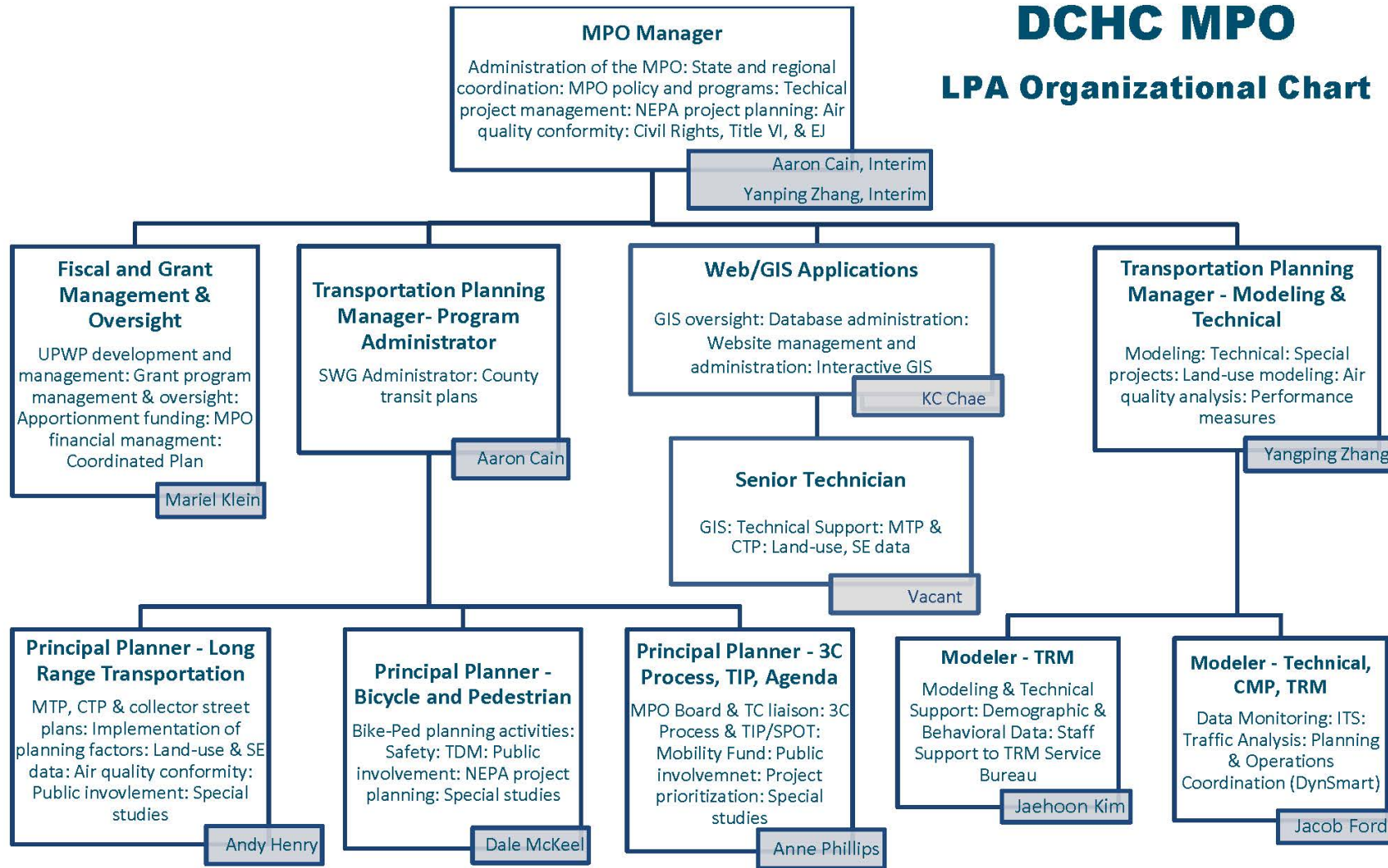
# What is the UPWP?



- Required by federal regulation
- Details and guides transportation planning activities
- Annual funding document
- Funding comes from FHWA and FTA and is matched by state and local sources
  - FHWA provides 80% and requires a 20% local match
  - FTA provides 80% transit funding, NCDOT provides 10% for 5303, and transit agencies provide 10% match
  - In 2014, the MPO began cost sharing for the FHWA 20% local match

# DCHC MPO

## LPA Organizational Chart



**Interns; Temporary & Part-time**

Support for positions listed above;  
Supervised by MPO Manager.

Glossary	<b>CMP</b> Congestion Management Process	<b>NEPA</b> National Environmental Policy Act
	<b>CTP</b> Comprehensive Transportation Plan	<b>SE</b> Socio Economic
	<b>EJ</b> Environmental Justice	<b>SPOT</b> Strategic Planning Office of Transportation
	<b>GIS</b> Geographic Information Systems	<b>TC</b> Technical Committee
	<b>ITS</b> Intelligent Transportation System	<b>TDM</b> Transportation Demand Management
	<b>LEP</b> Local Enterprise Partnership	<b>TIP</b> Transportation Improvement Program
	<b>LPA</b> Lead Planning Agency	<b>TRM</b> Transportation Regional Model
	<b>MPO</b> Metropolitan Planning Organization	<b>UPWP</b> Unified Planning Work Program
	<b>MTP</b> Metropolitan Transportation Plan	<b>3C</b> Comprehensive, Cooperative, & Continuing

- Work on 2055 MTP
- Work with NCDOT on STIP reprogramming and the development of the 2024-2033 TIP
- Explore integration of Big Data/open source data for technical and modeling processes
- TRM Generation-G2 base year and future direction
- Update CTP
- Continue regional transit implementation and coordination
- Continue analysis of the Annual Continuous Travel Behavior Survey



# FY21 Accomplishments

MPO Board 1/12/2022 Item 12

DURHAM • CHAPEL HILL • CARRBORO

**DCHC**

METROPOLITAN PLANNING ORGANIZATION

PLANNING TOMORROW'S TRANSPORTATION

- Comprehensive Transportation Plan (CTP) Development
- Public Involvement Process
- 2045/2050 Metropolitan Transportation Plan (MTP)
- Continuing Services

# Summary of Funding Sources

	Federal	State	Local	Total
<b>FY23 STBG-DA (FHWA)</b>	\$ 2,562,687		\$640,672	<b>\$ 3,203,359</b>
<b>FY22 STBG-DA (FHWA)</b>	\$55,503		\$13,876	<b>\$69,378</b>
<b>FY23 PL (FHWA)</b>	\$493,000		\$123,325	<b>\$616,325</b>
<b>FTA 5303 (FTA)</b>	\$ 740,544	\$92,568	\$92,568	<b>\$925,680</b>
<b>FTA 5307 (FTA)</b>	\$ 537,856	\$67,232	\$67,232	<b>\$ 672,320</b>
<b>Total</b>	<b>\$ 4,389,589</b>	<b>\$159,800</b>	<b>\$937,672</b>	<b>\$5,487,062</b>

- FHWA Funding:
  - STBG-DA: Section 133(b)(3)(7)
    - › Flexible funding that can be used for projects to preserve and improve conditions and performance of public roads, pedestrian and bike infrastructure, and to implement transit capital projects
  - Planning (PL): Section 104(f)
    - › Distributed by population to MPO's to conduct planning activities
- FTA Funding:
  - 5303 and 5307 grants are programmed by transit agencies

# Summary of Federal Funding (80%) by Agency

AGENCY	FHWA		FTA		TOTAL
	STBG-DA	PL	5303	5307	
<b>Lead Planning Agency (LPA)</b>	\$ 1,998,000	\$492,800	\$82,440		<b>\$ 2,573,640</b>
Town of Carrboro	\$ 16,800				<b>\$16,800</b>
Town of Chapel Hill/ CH Transit	\$ 144,000		\$142,072		<b>\$ 286,072</b>
City of Durham	\$ 76,274				<b>\$76,274</b>
Town of Hillsborough	\$224,000				<b>\$224,000</b>
Chatham County					
Durham County	\$ 54,216				<b>\$ 54,216</b>
GoDurham					
GoTriangle				\$ 121,040	<b>\$ 121,040</b>
Orange County	\$20,000			\$20,000	<b>\$40,000</b>
TJCOG	\$ 84,500				<b>\$ 84,500</b>
<b>TOTAL</b>	<b>\$ 2,618,190</b>	<b>\$492,800</b>	<b>\$224,512</b>	<b>\$141,040</b>	<b>\$ 3,476,542</b>

# FY2023 UPWP All Funding Sources

## MPO Wide - Detail Funding Tables - All Funding Sources

	Task Description	STBG-DA 133(b)(3)(7)			Sec. 104(f) PL			Section 5303 Highway/Transit			Section 5307 Transit			Task Funding Summary			
		Local 20%	FHWA 80%	TOTAL 100%	Local 20%	FHWA 80%	TOTAL 100%	Local 10%	NCDOT 10%	FTA 80%	Local 10%	NCDOT 10%	FTA 80%	Local	NCDOT	Federal	Total
<b>II A</b>	<b>Data and Planning Support</b>																
1	Networks and Support Systems	42,113	168,452	210,565	29,600	118,400	148,000	856	856	6,848	0	0	0	72,569	856	293,700	367,125
2	Travelers and Behavior	99,568	398,271	497,839	4,400	17,600	22,000	3,122	3,122	24,976	0	0	0	107,090	3,122	440,847	551,059
3	Transportation Modeling	71,155	284,622	355,777	10,000	40,000	50,000	289	289	2,312	15,325	15,325	122,600	96,769	15,614	449,534	561,917
<b>II-B</b>	<b>Planning Process</b>																
1	Targeted Planning/CMP	32,245	128,981	161,226	7,000	28,000	35,000	2,134	2,134	17,072	0	0	0	41,379	2,134	174,053	217,566
2	Regional Planning	40,531	162,125	202,656	8,000	32,000	40,000	11,005	11,005	88,040	2,305	2,305	18,440	61,841	13,310	300,605	375,756
3	Special Studies	252,900	1,011,599	1,264,499	4,800	19,200	24,000	1,700	1,700	13,600	0	0	0	259,400	1,700	1,044,399	1,305,499
<b>III-A</b>	<b>Planning Work Program</b>																
1	Planning Work Program	6,195	24,778	30,973	4,000	16,000	20,000	608	608	4,864	0	0	0	10,803	608	45,642	57,053
2	Metrics and Performance Measures	0	0	0	0	0	0	0	0	0	0	0	0	-	-	-	-
<b>III-B</b>	<b>Transp. Improvement Plan</b>																
1	Prioritization	0	0	0	200	800	1,000	0	0	0	0	0	0	200	-	800	1,000
2	Metropolitan TIP	5,787	23,146	28,933	14,000	56,000	70,000	3,122	3,122	24,976	0	0	0	22,909	3,122	104,122	130,153
3	Merger/Project Development	8,767	35,068	43,835	3,000	12,000	15,000	0	0	0	0	0	0	11,767	-	47,068	58,835
<b>III-C</b>	<b>Cvl Rgts. Cmp./Otr. Reg. Reqs.</b>																
1	Title VI	0	0	0	200	800	1,000	0	0	0	0	0	0	200	-	800	1,000
2	Environmental Justice	24,200	96,800	121,000	2,800	11,200	14,000	0	0	0	0	0	0	27,000	-	108,000	135,000
3	Minority Business Enterprise Planning	200	800	1,000	0	0	0	0	0	0	0	0	0	200	-	800	1,000
4	Planning for the Elderly & Disabled	200	800	1,000	0	0	0	0	0	0	0	0	0	200	-	800	1,000
5	Safety/Drug Control Planning	0	0	0	200	800	1,000	0	0	0	0	0	0	200	-	800	1,000
6	Public Involvement/Equitable Comm. Enga	13,939	55,754	69,693	13,000	52,000	65,000	1,828	1,828	14,624	0	0	0	28,767	1,828	122,378	152,973
7	Private Sector Participation	0	0	0	0	0	0	0	0	0	0	0	0	-	-	-	-
<b>III-D</b>	<b>Statewide &amp; Extra-Regional Planning</b>																
1	Statewide & Federal Policy Development & I	10,000	40,000	50,000	10,000	40,000	50,000	0	0	0	0	0	0	20,000	-	80,000	100,000
2	Statewide & Extra-Regional Planning	22,617	90,469	113,086	4,000	16,000	20,000	1,700	1,700	13,600	0	0	0	28,317	1,700	120,069	150,086
<b>III-E</b>	<b>Management &amp; Operations</b>																
1	Board & TC Support and Liaison	17,731	70,924	88,655	5,400	21,600	27,000	0	0	0	0	0	0	23,131	-	92,524	115,655
2	Member Services	5,800	23,200	29,000	1,200	4,800	6,000	1,700	1,700	13,600	0	0	0	8,700	1,700	41,600	52,000
3	Workgroup Support	600	2,400	3,000	1,400	5,600	7,000	0	0	0	0	0	0	2,000	-	8,000	10,000
3	Special Studies Freeway Corridor Study	85,200	340,800	426,000	4,800	19,200	24,000	0	0	0	0	0	0	90,000	-	360,000	450,000
3	Special Studies HIL Churton St	40,000	160,000	200,000	0	0	0	0	0	#VALUE!	0	0	0	40,000	-	#VALUE!	#VALUE!
3	Special Studies HIL Greenway Study	16,000	64,000	80,000										16,000	-	64,000	80,000
3	Special Studies I5-501 Corridor Study	30,000	120,000	150,000										30,000	-	120,000	150,000
3	Special Studies US-70 Additional Funding	30,000	120,000	150,000										30,000	-	120,000	150,000
<b>Totals</b>		<b>654,547</b>	<b>2,618,190</b>	<b>3,272,737</b>	<b>123,200</b>	<b>492,800</b>	<b>616,000</b>	<b>28,064</b>	<b>28,064</b>	<b>224,512</b>	<b>17,630</b>	<b>17,630</b>	<b>141,040</b>	<b>823,441</b>	<b>45,694</b>	<b>3,476,542</b>	<b>4,345,677</b>



# Local Match Cost Sharing (Dues)

Agency	Total FY2023
City of Durham	\$324,495
Durham County	\$55,103
Chapel Hill	\$79,593
Carrboro	\$30,613
Hillsborough	\$12,245
Orange County	\$48,980
Chatham County	\$18,368
GoTriangle	\$42,858
<b>Total</b>	<b>\$612,255</b>

- Allocated based on population and number of data collection sites
- Approving the UPWP approves the local match
- Only allocating local match sharing for FY23 STBG-DA funds, not FY22

# FY23 LPA New Initiatives

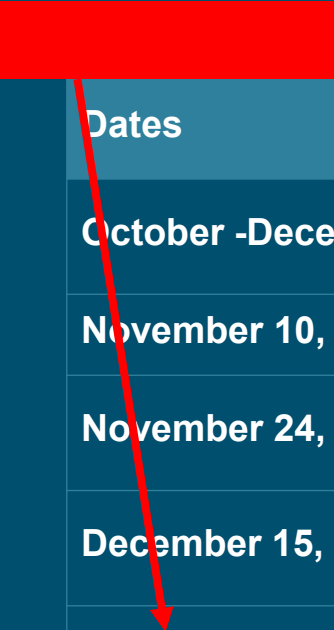
Initiative Description	Cost	Federal (80%)	Local Match (20%)	Requested by
Climate Mitigation	\$100,000	\$80,000	\$20,000	LPA
Equitable Engagement	\$100,000	\$80,000	\$20,000	LPA
Data Processing Consultant	\$50,000	\$40,000	\$10,000	LPA
Modeling Policy Tool	\$70,000	\$56,000	\$14,000	LPA
<b>TOTAL</b>	<b>\$320,000</b>	<b>\$256,000</b>	<b>\$64,000</b>	

Study Description	Cost	Federal (80%)	Local Match (20%)	Requested by
<b>15-501 Corridor Study</b>	\$150,000	\$120,000	\$30,000	LPA
<b>Durham Freeway Corridor Study</b>	\$450,000	\$360,000	\$90,000	LPA/City of Durham
South Churton St.	\$200,000	\$160,000	\$40,000	Hillsborough
Greenway Special Study	\$80,000	\$64,000	\$16,000	Hillsborough
<b>US-70</b>	<b>\$300,000</b>	<b>\$240,000</b>	<b>\$60,000</b>	<b>LPA</b>
<b>TOTAL</b>	<b>\$1,180,000</b>	<b>\$944,000</b>	<b>\$236,000</b>	

# LPA Expenses

LPA															
	Task Description	STBG-DA 133(b)(3)(7)		Sec. 104(f) PL		Section 5303 Highway/Transit			Section 5307 Transit			Task Funding Summary			
		Local 20%	FHWA 80%	Local 20%	FHWA 80%	Local 10%	NCDOT 10%	FTA 80%	Local 10%	NCDOT 10%	FTA 80%	Local	NCDOT	Federal	Total
<b>II A</b>	<b>Data and Planning Support</b>														
	1 Networks and Support Systems	\$36,400	\$145,600	\$29,600	\$118,400	\$0	\$0	\$0	\$0	\$0	\$0	\$66,000	\$0	\$264,000	\$330,000
	2 Travelers and Behavior	\$95,600	\$382,400	\$4,400	\$17,600	\$0	\$0	\$0	\$0	\$0	\$0	\$100,000	\$0	\$400,000	\$500,000
	3 Transportation Modeling	\$70,000	\$280,000	\$10,000	\$40,000	\$0	\$0	\$0	\$0	\$0	\$0	\$80,000	\$0	\$320,000	\$400,000
<b>II-B</b>	<b>Planning Process</b>														
	1 Targeted Planning/CMP	\$20,200	\$80,800	\$7,000	\$28,000	\$0	\$0	\$0	\$0	\$0	\$0	\$27,200	\$0	\$108,800	\$136,000
	2 Regional Planning	\$23,600	\$94,400	\$8,000	\$32,000	\$10,305	\$10,305	\$82,440	\$0	\$0	\$0	\$41,905	\$10,305	\$208,840	\$261,050
	3 Special Studies	\$185,200	\$740,800	\$4,800	\$19,200	\$0	\$0	\$0	\$0	\$0	\$0	\$190,000	\$0	\$760,000	\$950,000
<b>III-A</b>	<b>Planning Work Program</b>														
	1 Planning Work Program	\$4,000	\$16,000	\$4,000	\$16,000	\$0	\$0	\$0	\$0	\$0	\$0	\$8,000	\$0	\$32,000	\$40,000
	2 Metrics and Performance Measures	\$0	\$0	\$0	\$0	\$0	\$0	\$0	\$0	\$0	\$0	\$0	\$0	\$0	\$0
<b>III-B</b>	<b>Transp. Improvement Plan</b>														
	1 Prioritization	\$0	\$0	\$200	\$800	\$0	\$0	\$0	\$0	\$0	\$0	\$200	\$0	\$800	\$1,000
	2 Metropolitan TIP	\$0	\$0	\$14,000	\$56,000	\$0	\$0	\$0	\$0	\$0	\$0	\$14,000	\$0	\$56,000	\$70,000
	3 Merger/Project Development	\$4,000	\$16,000	\$3,000	\$12,000	\$0	\$0	\$0	\$0	\$0	\$0	\$7,000	\$0	\$28,000	\$35,000
<b>III-C</b>	<b>Cvl Rgts. Cmp./Otr .Reg. Reqs.</b>														
	1 Title VI	\$0	\$0	\$200	\$800	\$0	\$0	\$0	\$0	\$0	\$0	\$200	\$0	\$800	\$1,000
	2 Environmental Justice	\$24,200	\$96,800	\$2,800	\$11,200	\$0	\$0	\$0	\$0	\$0	\$0	\$27,000	\$0	\$108,000	\$135,000
	3 Minority Business Enterprise Planni	\$200	\$800	\$0	\$0	\$0	\$0	\$0	\$0	\$0	\$0	\$200	\$0	\$800	\$1,000
	4 Planning for the Elderly & Disabled	\$200	\$800	\$0	\$0	\$0	\$0	\$0	\$0	\$0	\$0	\$200	\$0	\$800	\$1,000
	5 Safety/Drug Control Planning	\$0	\$0	\$200	\$800	\$0	\$0	\$0	\$0	\$0	\$0	\$200	\$0	\$800	\$1,000
	6 Public Involvement/ Equitable Comr	\$10,000	\$40,000	\$13,000	\$52,000	\$0	\$0	\$0	\$0	\$0	\$0	\$23,000	\$0	\$92,000	\$115,000
	7 Private Sector Participation	\$0	\$0	\$0	\$0	\$0	\$0	\$0	\$0	\$0	\$0	\$0	\$0	\$0	\$0
<b>III-D</b>	<b>Statewide &amp; Extra-Regional Planning</b>														
	1 Statewide & Federal Policy Developpr	\$10,000	\$40,000	\$10,000	\$40,000	\$0	\$0	\$0	\$0	\$0	\$0	\$20,000	\$0	\$80,000	\$100,000
	2 Statewide & Extra-Regional Planning	\$0	\$0	\$4,000	\$16,000	\$0	\$0	\$0	\$0	\$0	\$0	\$4,000	\$0	\$16,000	\$20,000
<b>III-E</b>	<b>Management &amp; Operations</b>														
	1 Board & TC Support and Liaison	\$14,600	\$58,400	\$5,400	\$21,600	\$0	\$0	\$0	\$0	\$0	\$0	\$20,000	\$0	\$80,000	\$100,000
	2 Member Services	\$800	\$3,200	\$1,200	\$4,800	\$0	\$0	\$0	\$0	\$0	\$0	\$2,000	\$0	\$8,000	\$10,000
	3 Workgroup Support	\$600	\$2,400	\$1,400	\$5,600	\$0	\$0	\$0	\$0	\$0	\$0	\$2,000	\$0	\$8,000	\$10,000
	<b>Totals</b>	<b>\$499,600</b>	<b>\$1,998,400</b>	<b>\$123,200</b>	<b>\$492,800</b>	<b>\$10,305</b>	<b>\$10,305</b>	<b>\$82,440</b>	<b>\$0</b>	<b>\$0</b>	<b>\$0</b>	<b>\$633,105</b>	<b>\$10,305</b>	<b>\$2,573,640</b>	<b>\$3,217,050</b>

# FY23 UPWP Development Schedule



<b>Dates</b>	<b>DCHC MPO Activity Description</b>
<b>October -December 2021</b>	<b>Development of draft FY2023 UPWP in coordination with local agencies.</b>
<b>November 10, 2021</b>	<b>MPO Board approves new UPWP Prospectus</b>
<b>November 24, 2021</b>	<b>Deadline for funding request and supplemental documents to be submitted to MPO by member agencies.</b>
<b>December 15, 2021</b>	<b>TC reviews draft FY2023 UPWP and recommends Board release for public comment.</b>
<b>January 12, 2022</b>	<b>MPO Board reviews draft of FY2023 UPWP and releases draft for public comment.</b>
<b>February 9, 2022</b>	<b>MPO Board holds public hearing</b>
<b>February 23, 2022</b>	<b>TC receives final FY2023 UPWP and recommends Board approve final at March Board meeting.</b>
<b>March 9, 2022</b>	<b>MPO Board approves final FY2023 UPWP, including approval of self-certification process and local match.</b>
<b>March 11, 2022</b>	<b>Deadline for final FY2022 UPWP to be submitted to NCDOT and FHWA for approval. NCDOT/PTD will submit UPWP to FTA for approval.</b>

- TC Recommendation
  - Recommend the Board release the Draft FY2023 UPWP for public comment
  
- Board Action (1/12/2022)
  - Review draft UPWP and authorize release for public comment, to include Executive Summary