

PLANNING & INSPECTIONS DEPARTMENT
Craig N. Benedict, AICP, Director

Administration
(919) 245-2575
(919) 644-3002 (FAX)
www.orangecountync.gov



131 W. Margaret Lane
Suite 201
P. O. Box 8181
Hillsborough, NC 27278

MEMORANDUM

TO: Felix Nwoko, DCHC MPO Manager
FROM: Nishith Trivedi, Orange County Transportation Planner
CC: Craig Benedict, Orange County Planning Director
Tom Altieri, Comprehensive Planning Supervisor
DATE: November 11, 2020
SUBJECT: US 70 West Multimodal Study
Attachment: US 70 West Multimodal Corridor Map

Orange County would like to request that the Durham-Chapel Hill-Carrboro Metropolitan Planning Organization consider the US 70 West Multimodal Study as part of its FY 2021-2022 Unified Planning Work Program. This study would analyze the US 70 Corridor from Mebane to the Durham County line ([attachment 1](#)), evaluating for multi-modal accommodations, safety, access to and through the corridor, potential transit service and facilities, roadway connectivity and collector street plans, and planned and existing roads and interchanges in adopted plans.

The participants for this project would be the City of Mebane and Town of Hillsborough, Orange County, DCHC MPO and BG MPO, and NCDOT. Stakeholders include residents and businesses within the participating jurisdictions. This study can be done over the course of 18 months, which is comparable to the NC 98 Corridor Study timeline. If included in the FY 2022 UPWP, it is anticipated the study would begin early 2022 and end Summer 2023

Currently, a portion of this corridor – from the I-40/I-85/US-70 Connector to the Durham County line – is in the Comprehensive Transportation Plan with a recommendation for widening, and the study would determine other recommendations for the area between NC 119 in the City of Mebane and the I-40/I-85/US-70 Connector. Connections for all modes of traffic across and along US 70 are not addressed in the current plans. Given the length and potential for development in the corridor, current recommendations may not provide adequate multimodal access to the area, resulting in high traffic volumes and auto-oriented roadway cross-sections throughout the corridor.

The planning work done for this corridor has also not addressed a definitive plan for how traffic from local neighborhoods may access the corridor and how potential improvements can provide access for residents and businesses currently on US 70. Additionally, while there is not currently an emphasis on transit service in this corridor, there are potential opportunities for transit improvements, along with connections to other regional transit service extending to Durham, RTP, RDU or Raleigh, as a supplement to transit work done on I-40 and I-85. The Orange County Transit Plan Update should be completed in the spring 2021, and recommendations included in it for transit improvements along the corridor can help inform the study.

Burlington-Graham Metropolitan Planning Organization

Physical Address: 235 East Summit Avenue
Burlington, NC 27215
Mailing Address: PO Box 1358
Burlington, NC 27216-1358
Attn: Wannetta Mallette
web site: www.bgmpo.org

FY 2022 Unified Planning Work Program Section #104 PL Funding Request

Submission Deadline – December 31, 2020

Thank you for your interest in submitting a request to the Burlington-Graham MPO for Federal Planning Funds. Please provide us with the following information. Use additional paper or attach supporting information if necessary.

Submitted by: _____

Contact Info: _____

Agency/Municipality/Organization: _____

Telephone: _____

Email: _____

A. TASK TITLE: What is the title of the task?

US-70 West Multimodal Study

B. PROJECT LOCATION (name of roadway, intersection, geographic area, etc.):
(Attached maps if necessary)

- US-70 Corridor
 - West Terminus: NC-119
 - East Terminus: Durham County Line

C. OBJECTIVE/TASK DESCRIPTION (What is the purpose and scope of work for the task)? Please state whether this is a multi-year effort and identify each phase, and for which phase the applicant is requesting funding.

The study area will continue to experience very fast residential growth -- the population of Mebane has doubled in the last decade and Mebane, Orange County and Hillsborough have already approved several thousand new residential units that are yet to be built. The area is also part of the Orange County economic development district that expects to continue placing new industry along the corridor. In addition, low-income and minority populations are

concentrated in the corridor, especially between Hillsborough and Mebane. The US 70 West Multimodal Study will not only create a much needed transportation plan for a fast growth corridor with limited resources, but do so using a unified, coherent process for the two counties, two municipalities and two MPOs that have planning authority in the area.

The principal study tasks will include:

- Analysis of existing conditions/Articulation of problem
 - Land use
 - State and local ordinances
 - Travel patterns and behaviors
 - ADT, VHT, VMT and hourly
 - Historic trends
 - Origin/Destination
 - Local Priorities
 - Access/Speed Management
 - Utility relocation
 - Low-Income/Minorities/Environmental Justice
 - Environmental Impact
 - Historic Preservation and Climate Impact
 - Modes
 - Transit service
 - Bike/pedestrian
 - Freight
 - Rail
 - Highway
- Future conditions
 - Land use/development potential
 - Travel patterns/behaviors
 - Economic Development
 - Residential Growth
 - Housing Trends/Impacts on Commuting
 - New transit/commute options
- Public Engagement
 - Website
 - 2 or 3 round of public meetings at each jurisdiction and MPO
- Alternatives evaluation (including potential for bike and ped facilities; impacts on land use, environment, historic properties; ripple effects on other commute routes)
 - No-build
 - Context sensitive
 - Capacity expansion (ultimate)
- Strategies
 - Short-term vs. long-term
 - Recommended Cross-Sections
 - Lighting and Landscaping
 - Implementation
- Action Plan

D. ALIGNMENT WITH NATIONAL PLANNING FACTORS AND TRANSPORTATION LONG RANGE PLANS: Describe which National Planning Factor this project aims to address. Is this project identified in the BGMPO 2045 Metropolitan Transportation Plan or Comprehensive Transportation Plan?

BG MPO 2045 MTP Goals

- Goal 1 Provide a safe, secure, comprehensive, and effective transportation system to move people and goods within and through the area.
 - Regional corridor traversing multiple local jurisdictions and two MPOs
 - Focus on multimodal accommodations for future transit, bike/ped, transit and auto
- Goal 2 Provide a transportation system that enables mobility choices
 - Focus on multimodal accommodations for future transit, bike/ped, transit and auto
- Goal 3 Seek to optimize the existing transportation system
 - US-70 is a strategic regional corridor
- Goal 4 Promote equity and accessibility in transportation options for transportation disadvantaged populations
 - In Orange County, this corridor intersects to Environmental Justice Communities of Concern.
 - In Alamance County, it is just short of an Environmental Justice Community of Concern (Green Level)
- Goal 5 Integrate land use and transportation planning
 - Study will provide recommendations on Future Conditions as listed above.

E. PARTICIPANTS: Who, besides the BGMPO, will take part in this task (i.e. other agencies, non-profits, consultants, community groups)?

- City of Mebane,
- Town of Hillsborough
- Orange County
- Go Triangle
- Piedmont Authority for Regional Transportation (PART)
- Durham-Chapel Hill-Carrboro Metropolitan Planning Organization (DCHC MPO)

F. BUDGET, SCOPE OF WORK AND PROJECT SCHEDULE: Please describe the tasks and anticipated schedule to complete the project. If you are able to estimate the budget for each task, please include that information. Requested funds should be expended by June 30, 2022. Add more rows if needed. **(BGMPO funds for planning studies are currently limited to \$50,000 for allowable expenses and require a 20% local match.)**

Task	Month/Year	Task Budget (if known)
1: Project Management and Coordination	Jan 2022	
2: Existing Conditions Analysis	Fall 2022	
3: Public Engagement and Draft Plan	Spring 2023	
4: Final Plan	Summer 2023	

Requested UPWP Amount	\$15,000 BG MPO FY 2022 UPWP
Non-Federal Cash Match	
Other Funding	\$15,000 DCHC MPO Local Match Cost Share
Total Project Cost	\$150,000 (20% Local match from BG and DCHC MPO)

G. EXPECTED DELIVERABLES: If this is a phased project spanning multiple fiscal years, identify deliverables for this specific phase and other phases where applicable.

- Public Engagement Website
- Draft Plan for US-70 West Multimodal Study
- Final Plan for US-70 West Multimodal Study

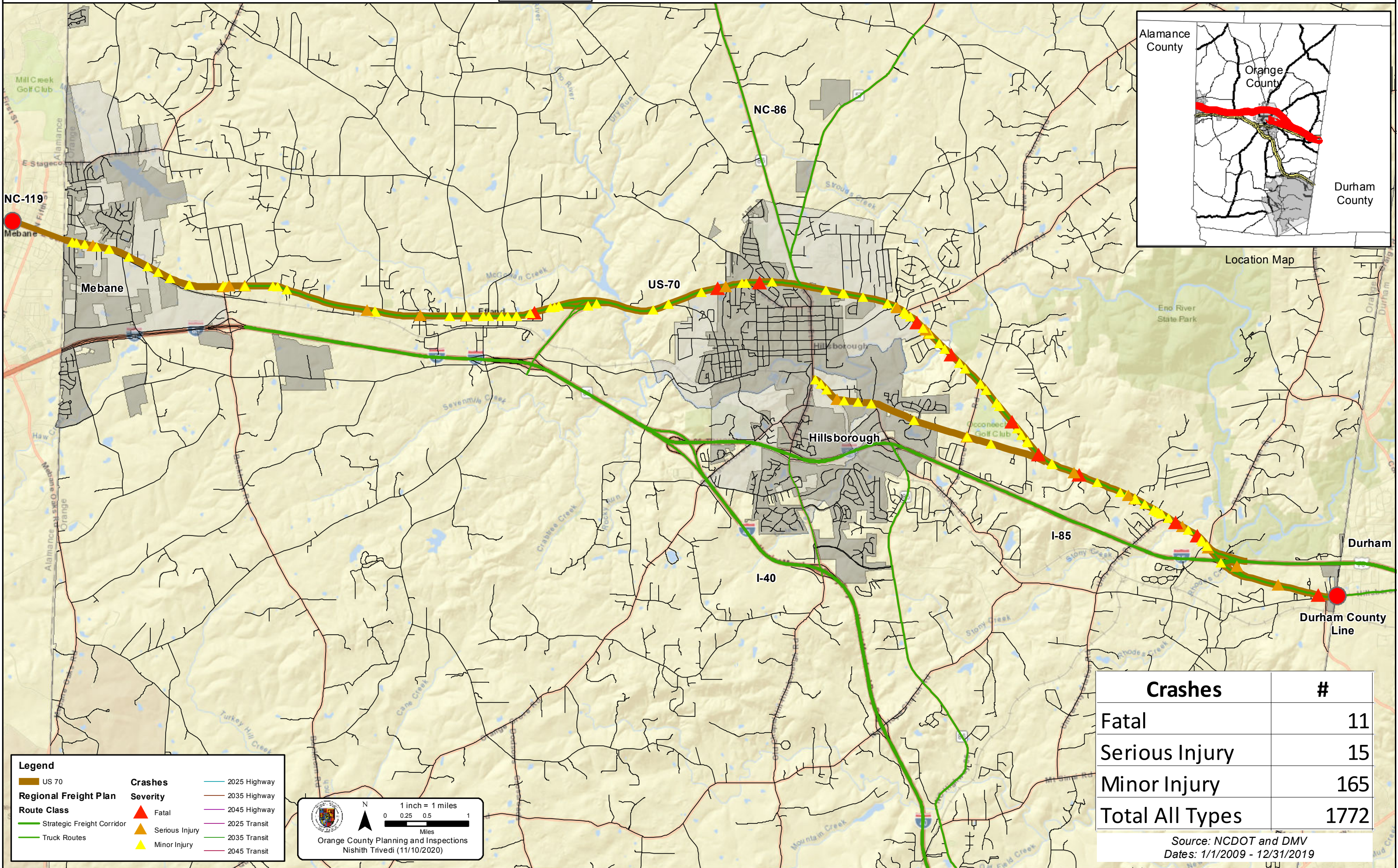
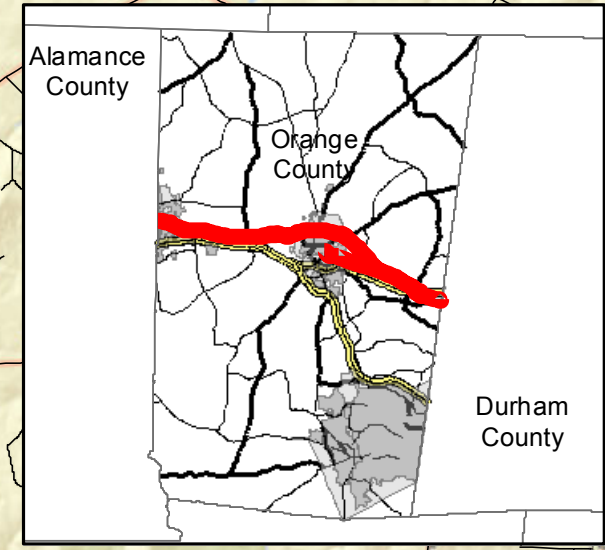
H. PROJECT MATCH REQUIREMENT: All municipal applications, including match amounts, must be presented to and approved by the governing body at an advertised public meeting (City/County Council, etc.). If matching funds are required, please attach a letter of support from your governing body to document the availability of the local match. Non-municipal partners would provide a letter from their Board or other governing body demonstrating knowledge and support of project request, ability and intent to provide matching funds, etc.

- City of Mebane – 3-5%
- Orange County – In-kind services – Transportation Planning Staff manage project
- DCHC MPO – 10%
- BG MPO – 3-7%

Please consider this study as we hope to better inform the CTP and MTP in planning the future of this corridor. Orange County staff is offering to manage this project while DCHC MPO locally administers it; this will allow coordination in solving multi-jurisdictional problems and providing desired outcomes to all participants. We can set up an additional meeting with all stakeholders involved to coordinate their desire in participating in this study.

If you have any questions regarding the information contained herein, please contact Nishith Trivedi at ntrivedi@orangecountync.gov.

Thank you.



Legend

Regional Freight Plan

Route Class

- US 70
- Strategic Freight Corridor
- Truck Routes

Crashes Severity

- Fatal
- Serious Injury
- Minor Injury

- 2025 Highway
- 2035 Highway
- 2045 Highway
- 2025 Transit
- 2035 Transit
- 2045 Transit

1 inch = 1 miles

0 0.25 0.5 1 Miles

Orange County Planning and Inspections
Nishith Trivedi (11/10/2020)

Crashes	#
Fatal	11
Serious Injury	15
Minor Injury	165
Total All Types	1772

Source: NCDOT and DMV
Dates: 1/1/2009 - 12/31/2019