

Figure 1: Estimated NC 54 Travelshed for Trips to Chapel Hill



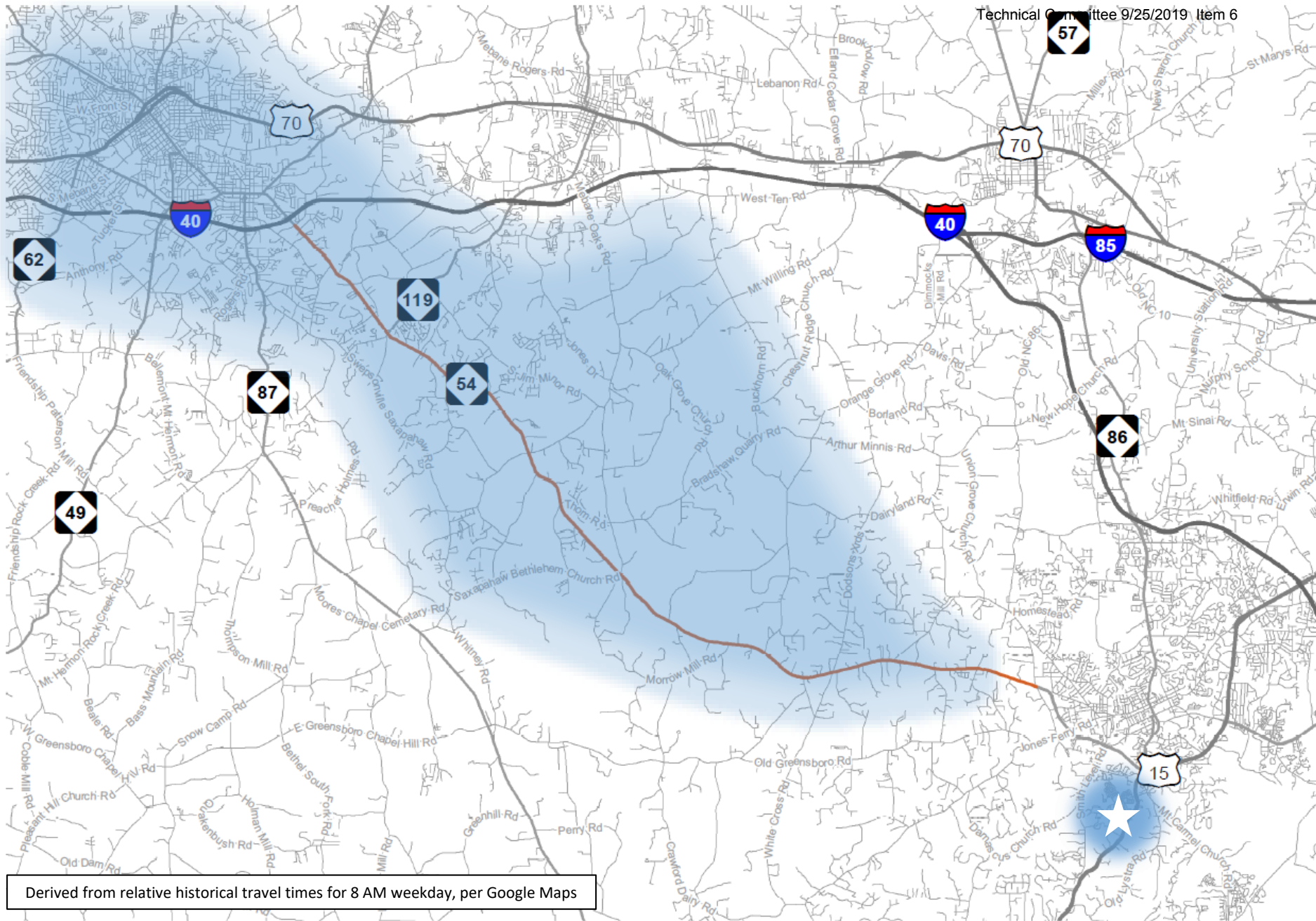
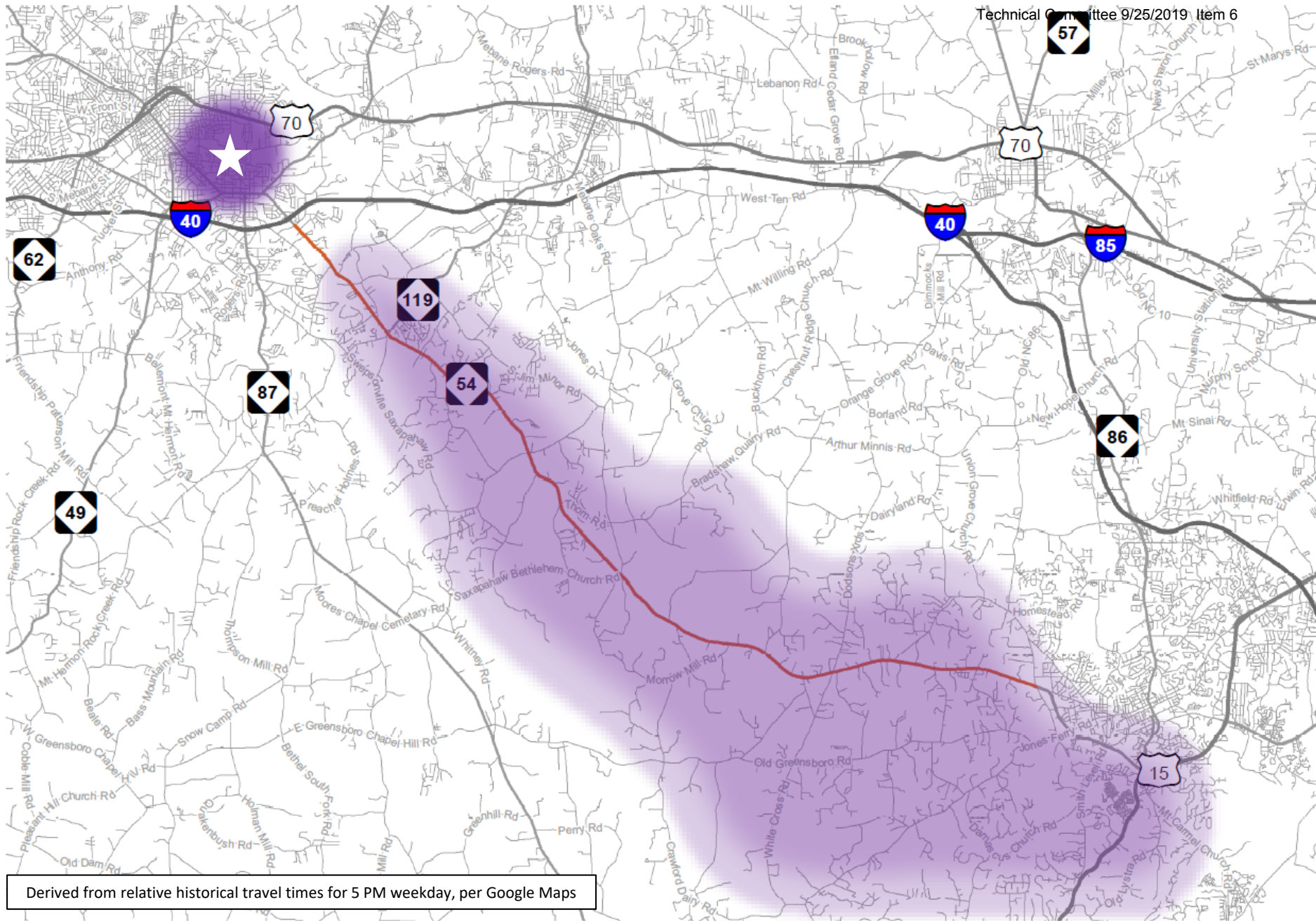


Figure 2: Estimated NC 54 Travelshed for Trips to Southern Village

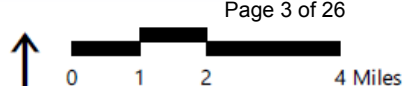




Derived from relative historical travel times for 5 PM weekday, per Google Maps



Figure 3: Estimated NC 54 Travelshed for Trips to Burlington



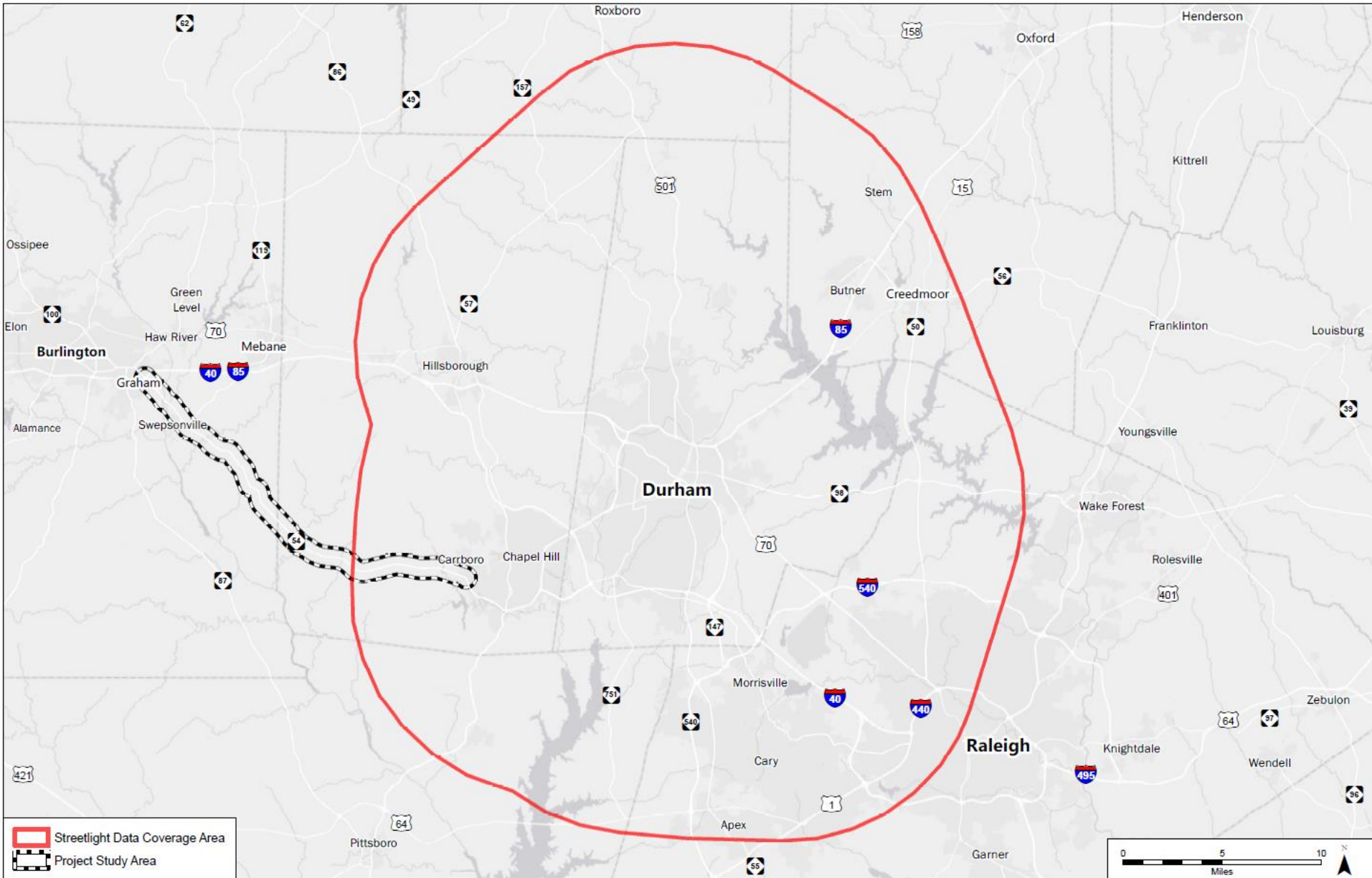


Figure 4: StreetLight InSight Dataset Coverage

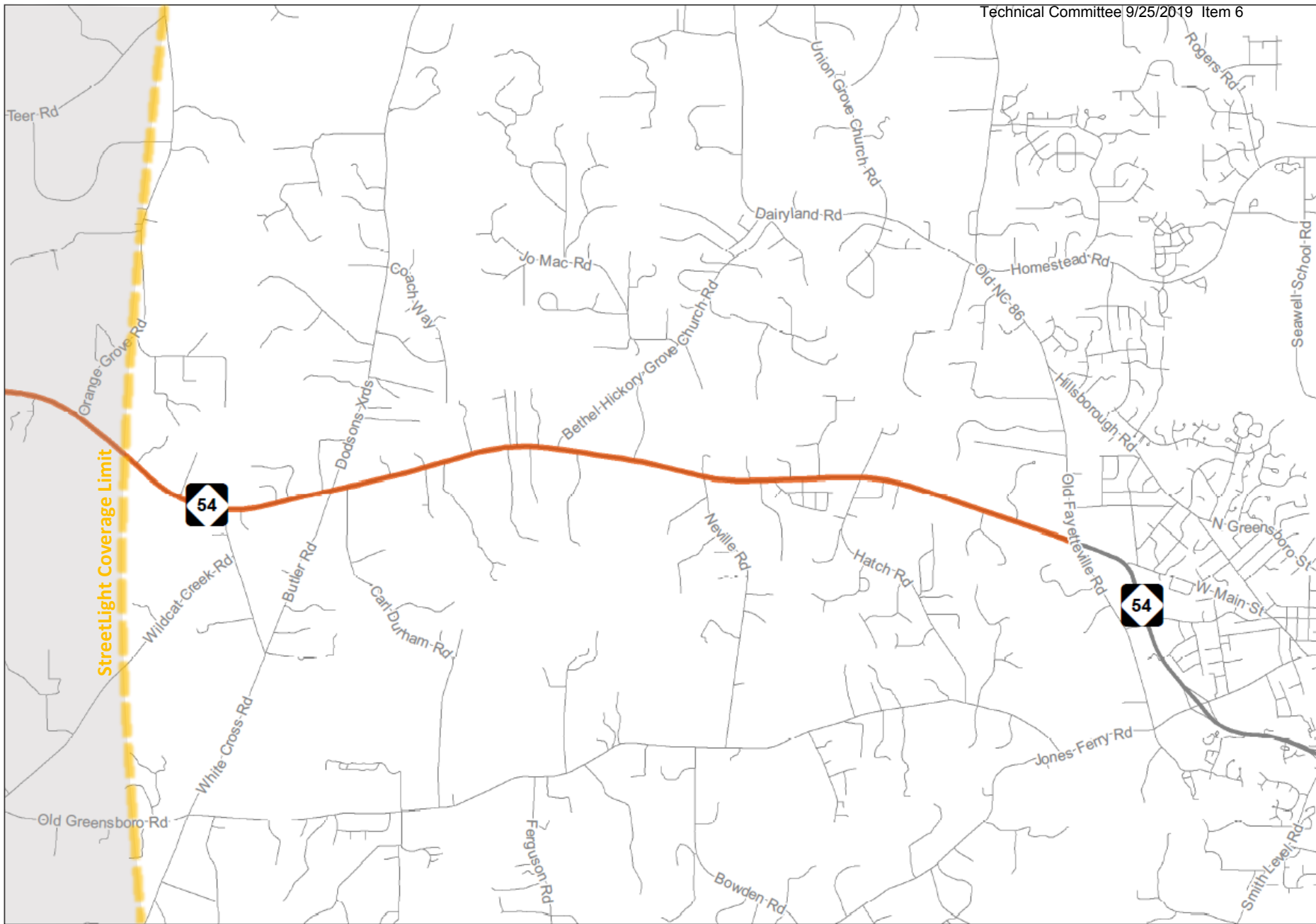


Figure 5: NC 54 Corridor Segment for StreetLight Origin-Destination Analysis

Daily Vehicle-Trip Distribution (StreetLight InSight Data)

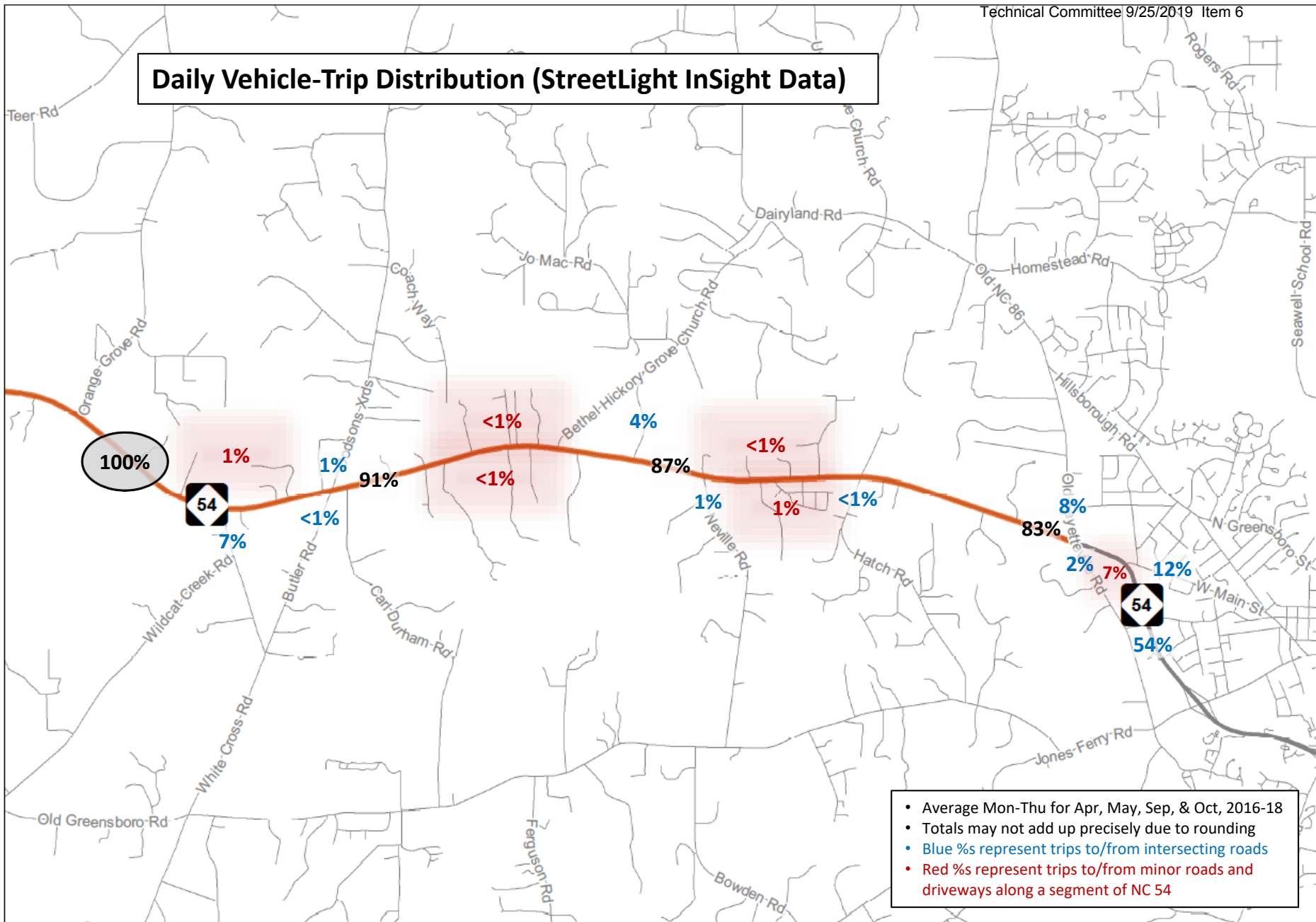


Figure 6: Origin-Destination Analysis – NC 54 East of Orange Grove Road



AM Peak Vehicle-Trip Distribution (StreetLight InSight Data)

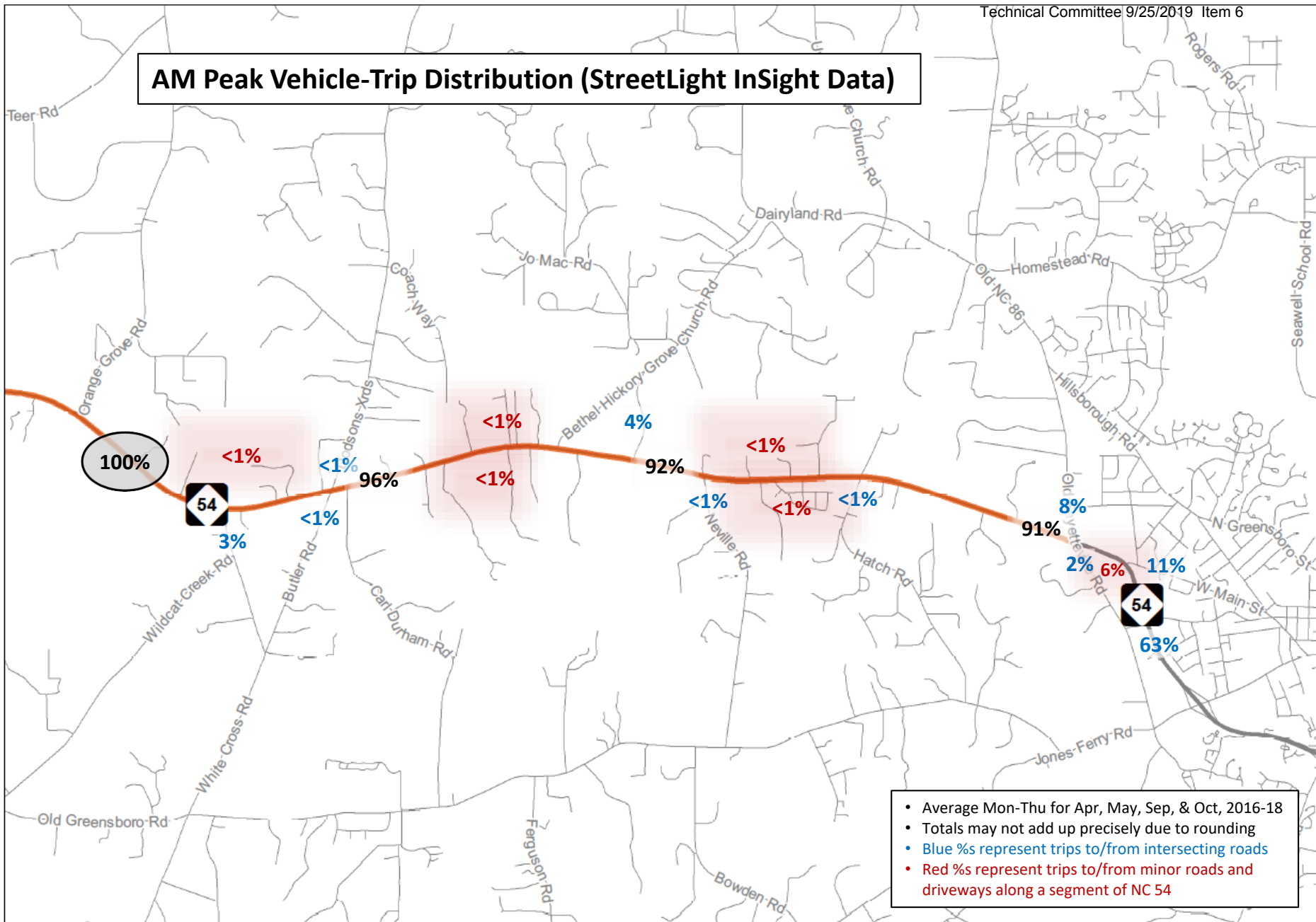
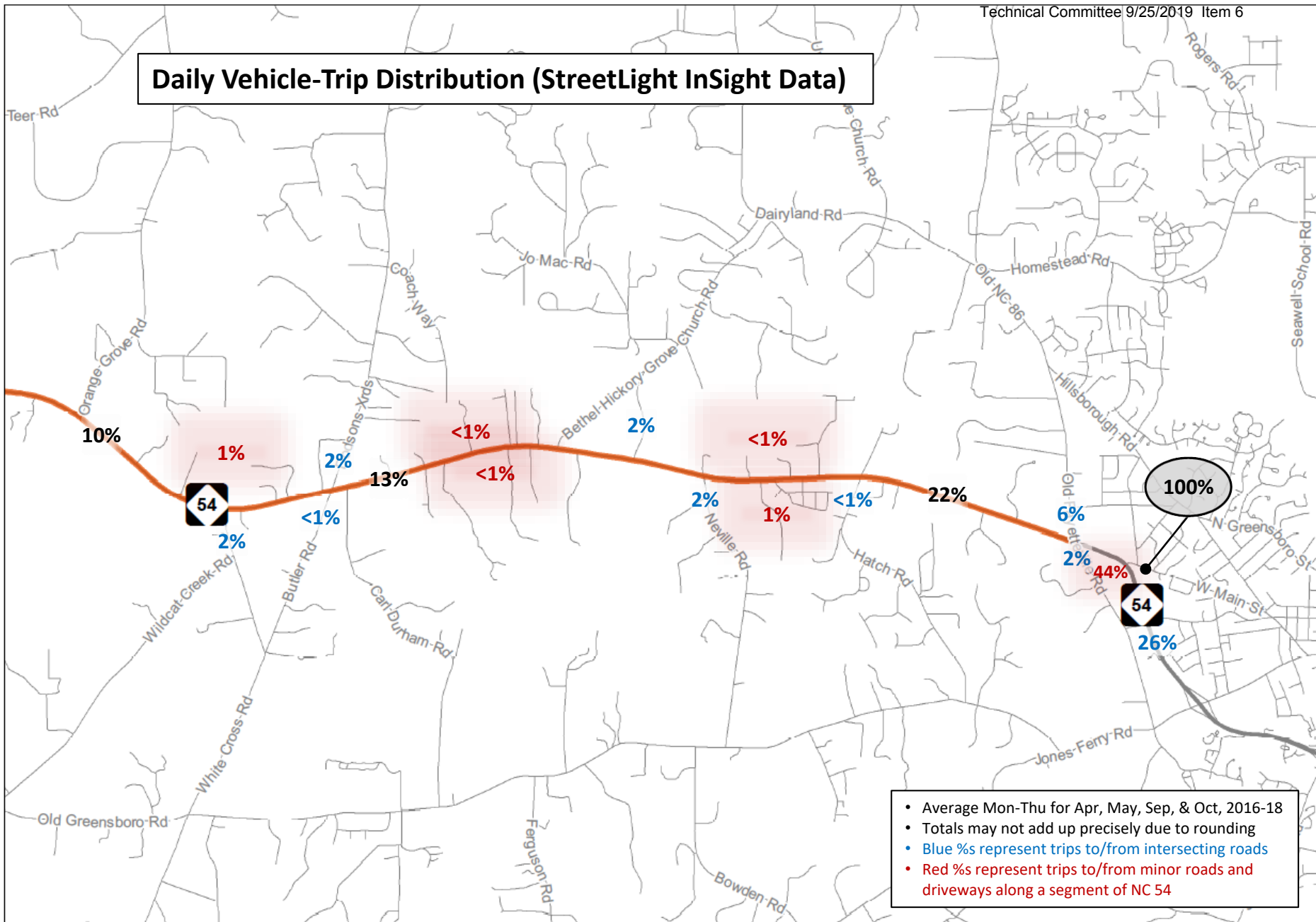


Figure 7: Origin-Destination Analysis – NC 54 East of Orange Grove Road



Daily Vehicle-Trip Distribution (StreetLight InSight Data)

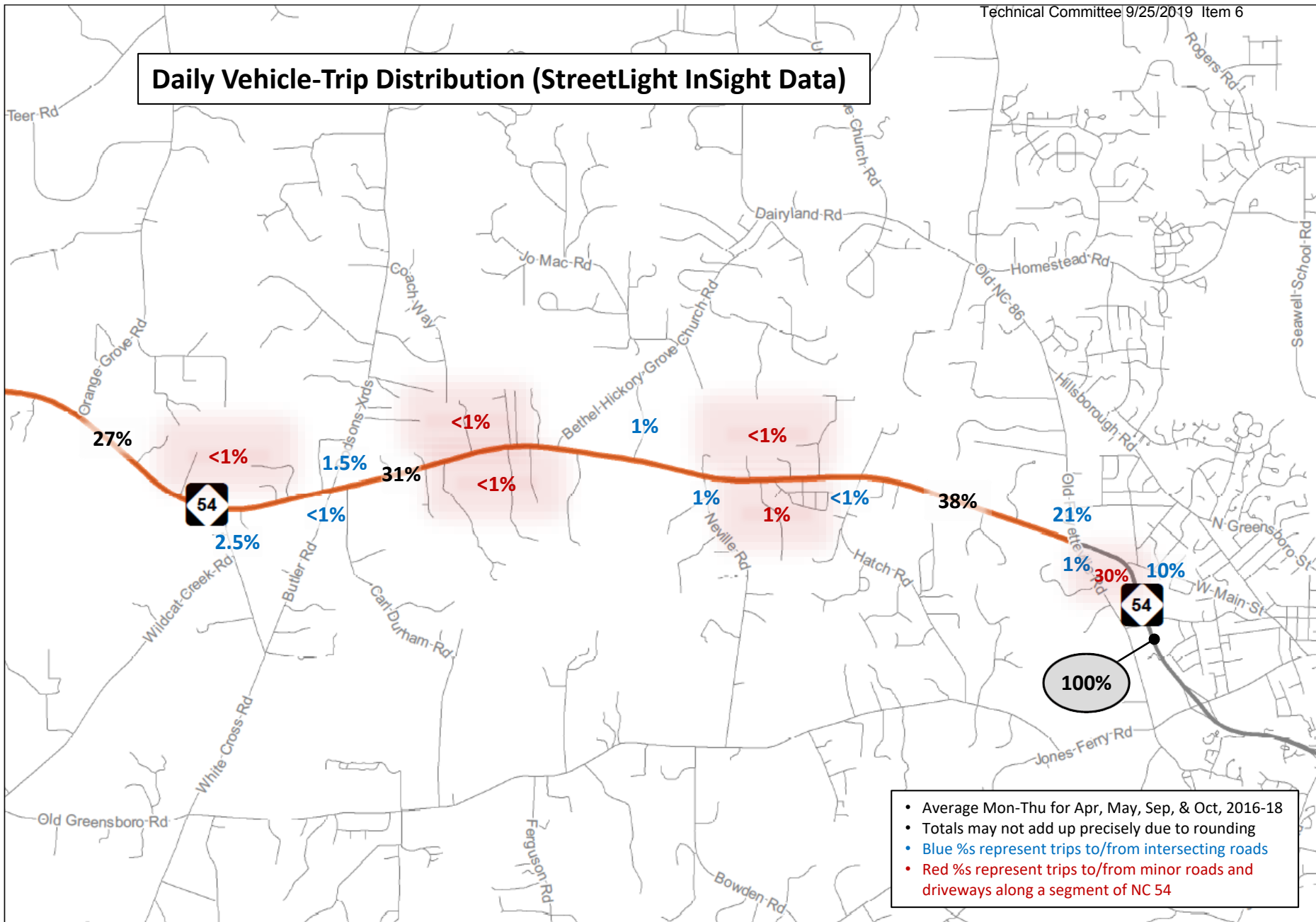


- Average Mon-Thu for Apr, May, Sep, & Oct, 2016-18
- Totals may not add up precisely due to rounding
- Blue %s represent trips to/from intersecting roads
- Red %s represent trips to/from minor roads and driveways along a segment of NC 54



Figure 8: Origin-Destination Analysis – West Main St East of NC 54 Bypass

Daily Vehicle-Trip Distribution (StreetLight InSight Data)

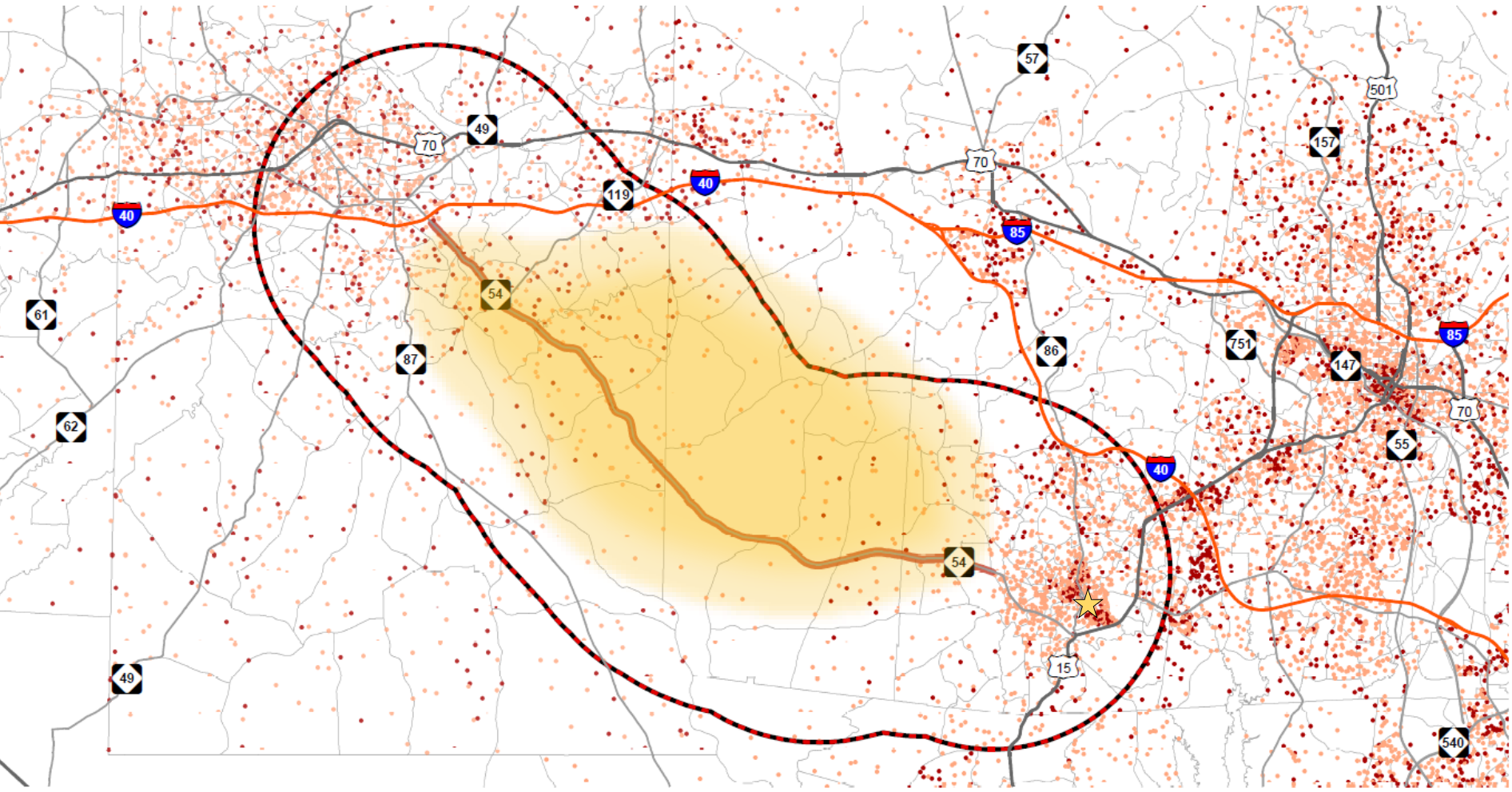


- Average Mon-Thu for Apr, May, Sep, & Oct, 2016-18
- Totals may not add up precisely due to rounding
- Blue %s represent trips to/from intersecting roads
- Red %s represent trips to/from minor roads and driveways along a segment of NC 54



Figure 9: Origin-Destination Analysis –NC 54 Bypass South of West Main St

Figure 10: TRM & PTRM Population Growth (2013 – 2045)



0 1 2 4 Miles

NC 54 West Corridor Study

Alamance and Orange Counties

5 Mile Project Buffer

Project Corridor

Population 2017 v 2045

1 Dot = 100

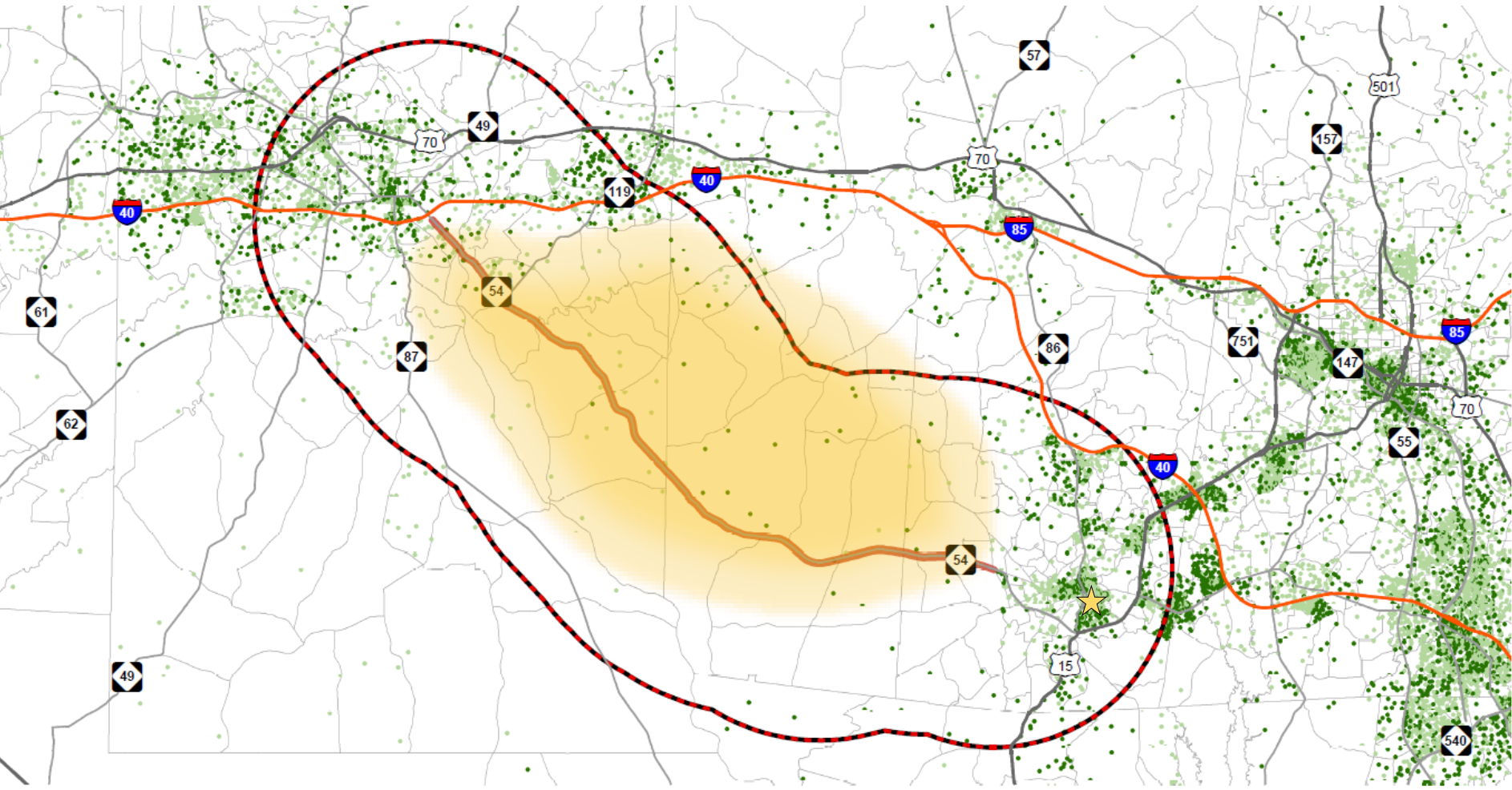
Population 2017 to 2045

Population 2017

TRM & PTRM Socio-Economic Data (2013-2045)

Source Info: NCDOT, VHB, NCOneMap, Alamance County, Orange County

Figure 11: TRM & PTRM Employment Growth (2013 – 2045)



NC 54 West Corridor Study

Alameda and Orange Counties

5 Mile Project Buffer

Project Corridor

Employment 2017 v 2045

1 Dot = 50

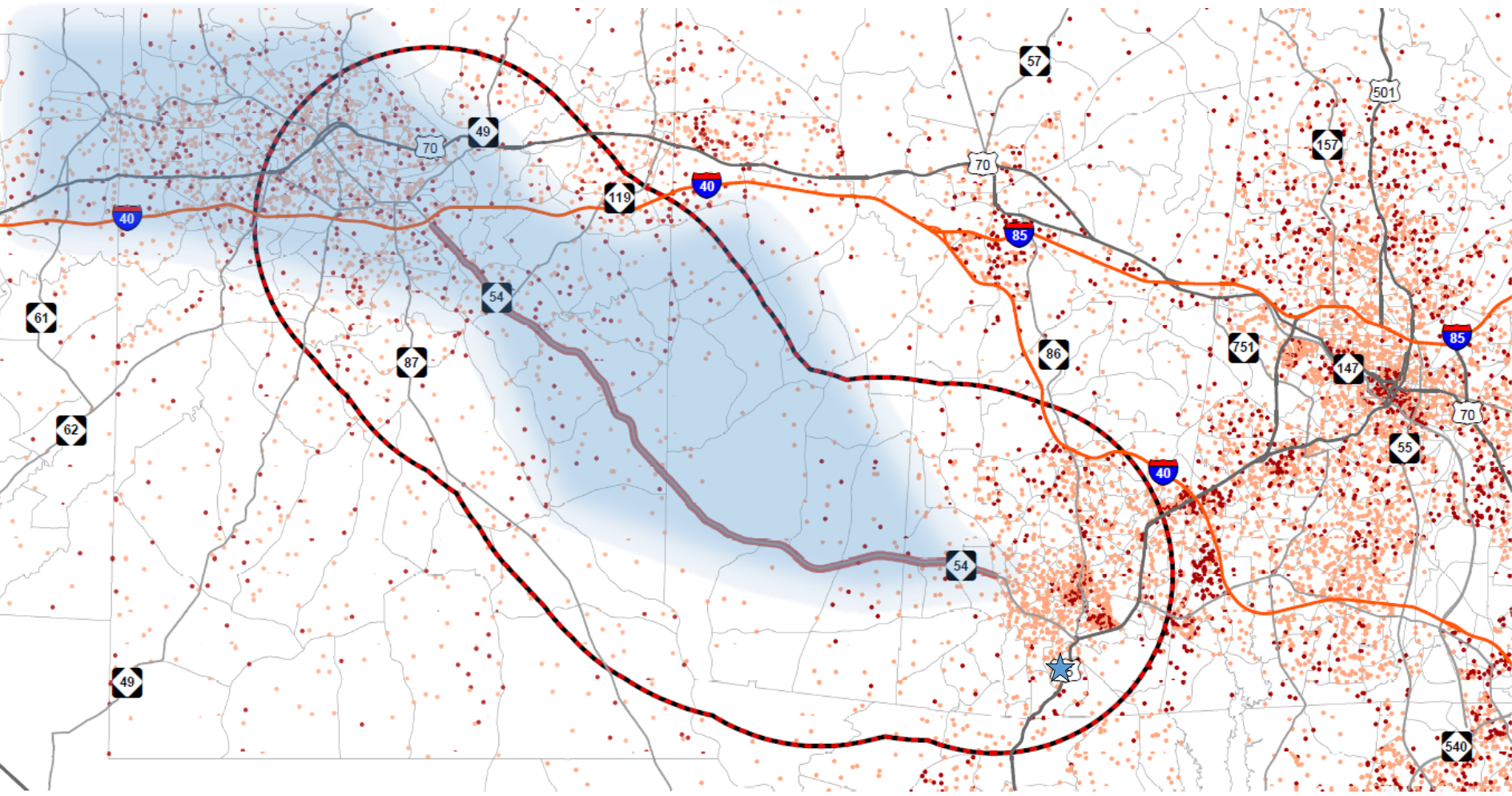
Employment 2017 to 2045

Employment 2017

TRM & PTRM Socio-Economic Data (2013-2045)

Source Info: NCDOT, VHB, NCOneMap, Alameda County, Orange County

Figure 10a: TRM & PTRM Population Growth (2013 – 2045)



NC 54 West Corridor Study

Alameda and Orange Counties

5 Mile Project Buffer

Project Corridor

Population 2017 v 2045

1 Dot = 100

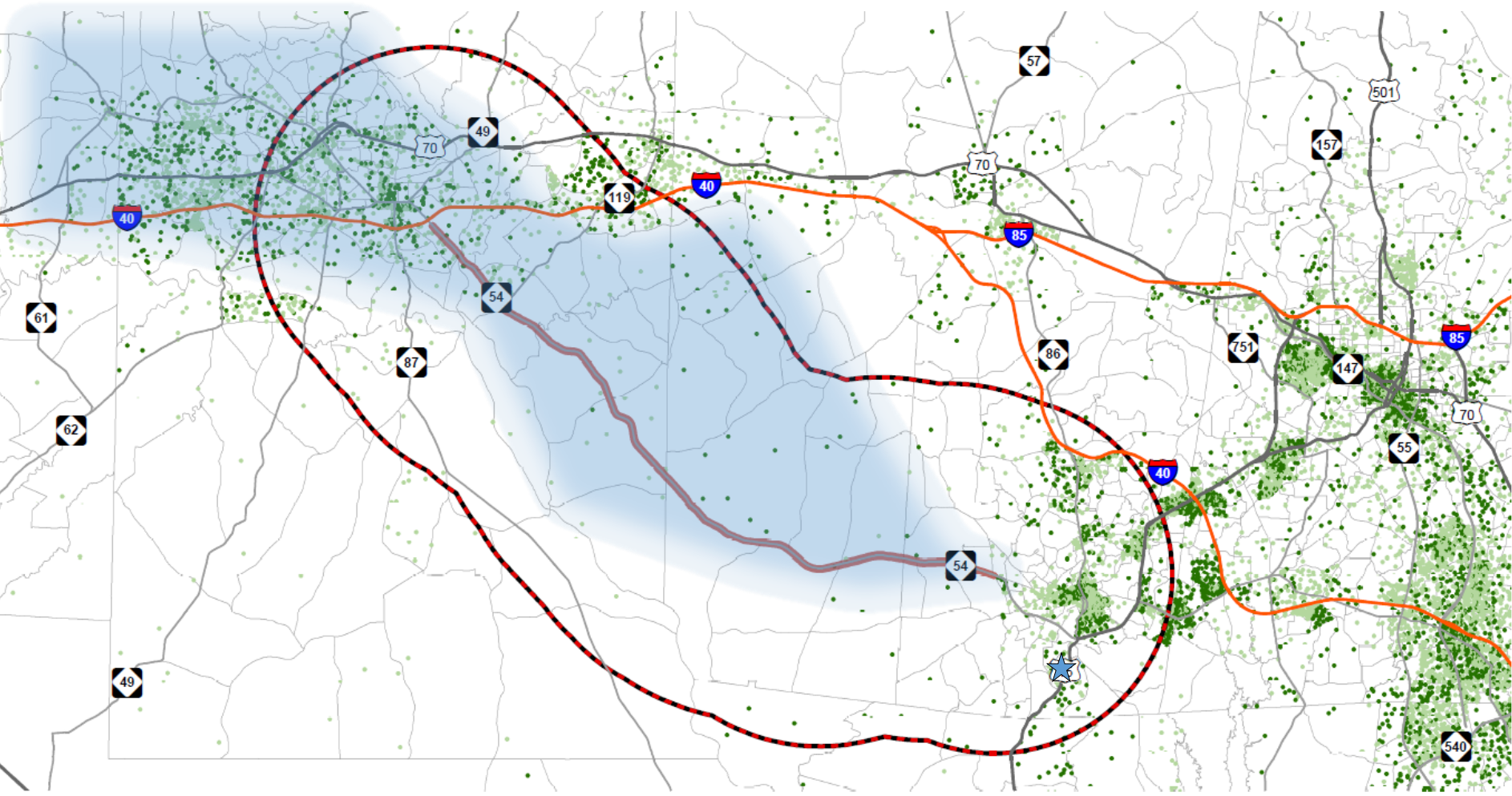
Population 2017 to 2045

Population 2017

TRM & PTRM Socio-Economic Data (2013-2045)

Source Info: NCDOT, VHB, NCOneMap, Alameda County, Orange County

Figure 11a: TRM & PTRM Employment Growth (2013 – 2045)



0 1 2 4 Miles

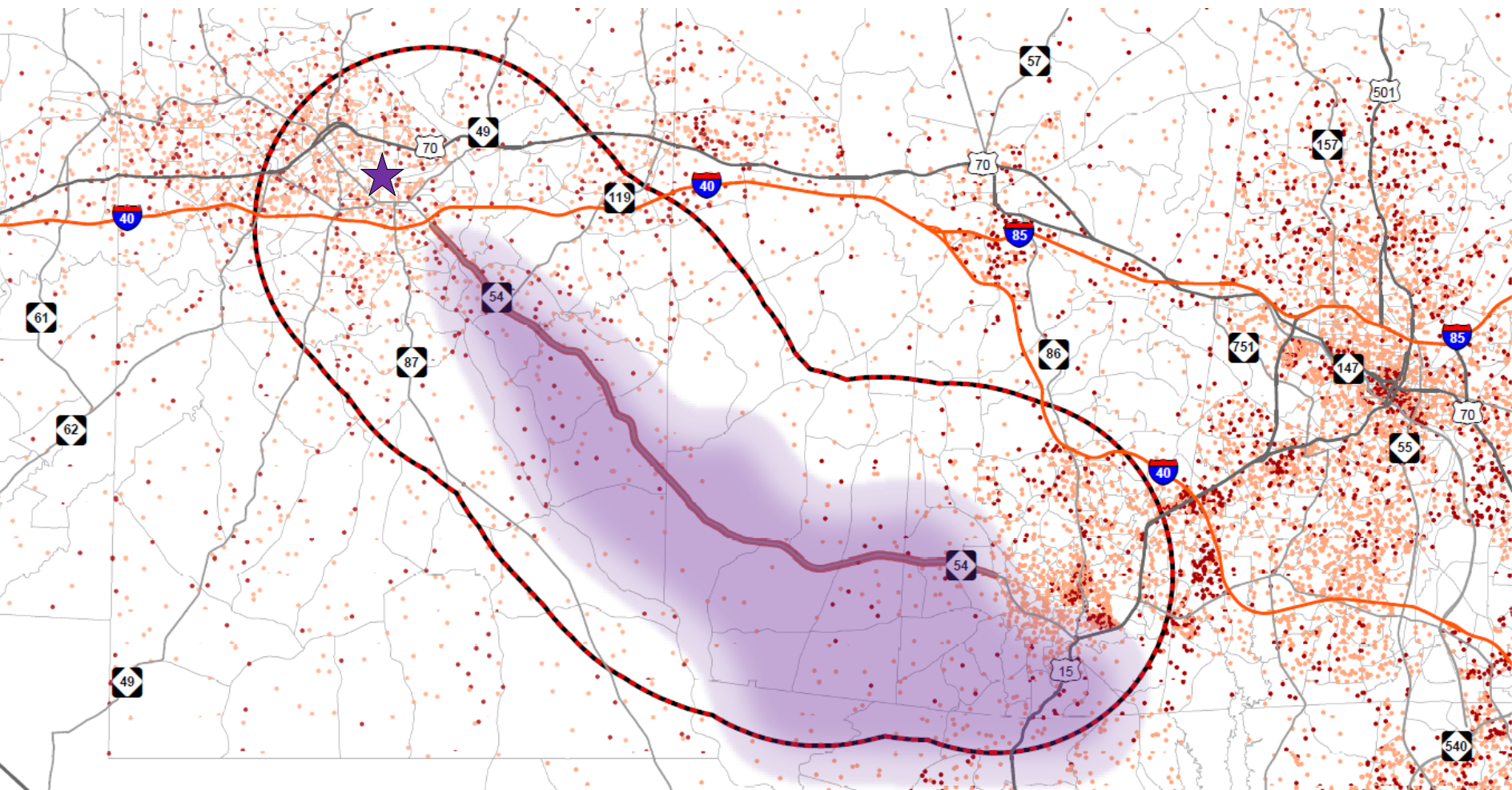
NC 54 West Corridor Study

Alameda and Orange Counties

- 5 Mile Project Buffer
- Project Corridor
- Employment 2017 v 2045
 - 1 Dot = 50
 - Employment 2017 to 2045
 - Employment 2017

TRM & PTRM Socio-Economic Data (2013-2045)
Source Info: NCDOT, VHB, NCOneMap, Alameda County, Orange County
Page 13 of 26

Figure 10b: TRM & PTRM Population Growth (2013 – 2045)



0 1 2 4 Miles

NC 54 West Corridor Study

Alamance and Orange Counties

- 5 Mile Project Buffer
- Project Corridor

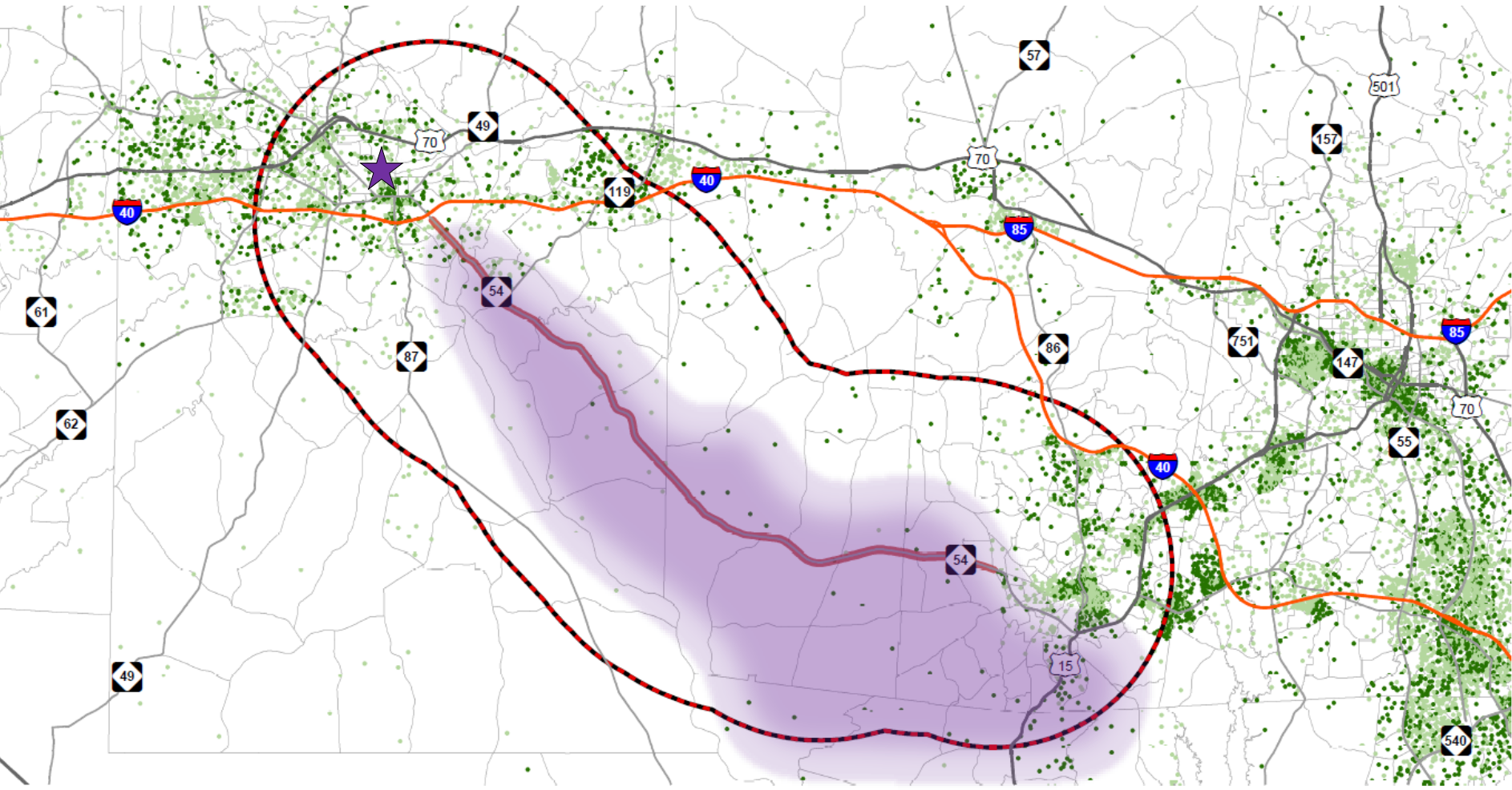
Population 2017 v 2045

- 1 Dot = 100
- Population 2017 to 2045
- Population 2017

TRM & PTRM Socio-Economic Data (2013-2045)

Source Info: NCDOT, VHB, NCOneMap, Alamance County, Orange County

Figure 11b: TRM & PTRM Employment Growth (2013 – 2045)



NC 54 West Corridor Study

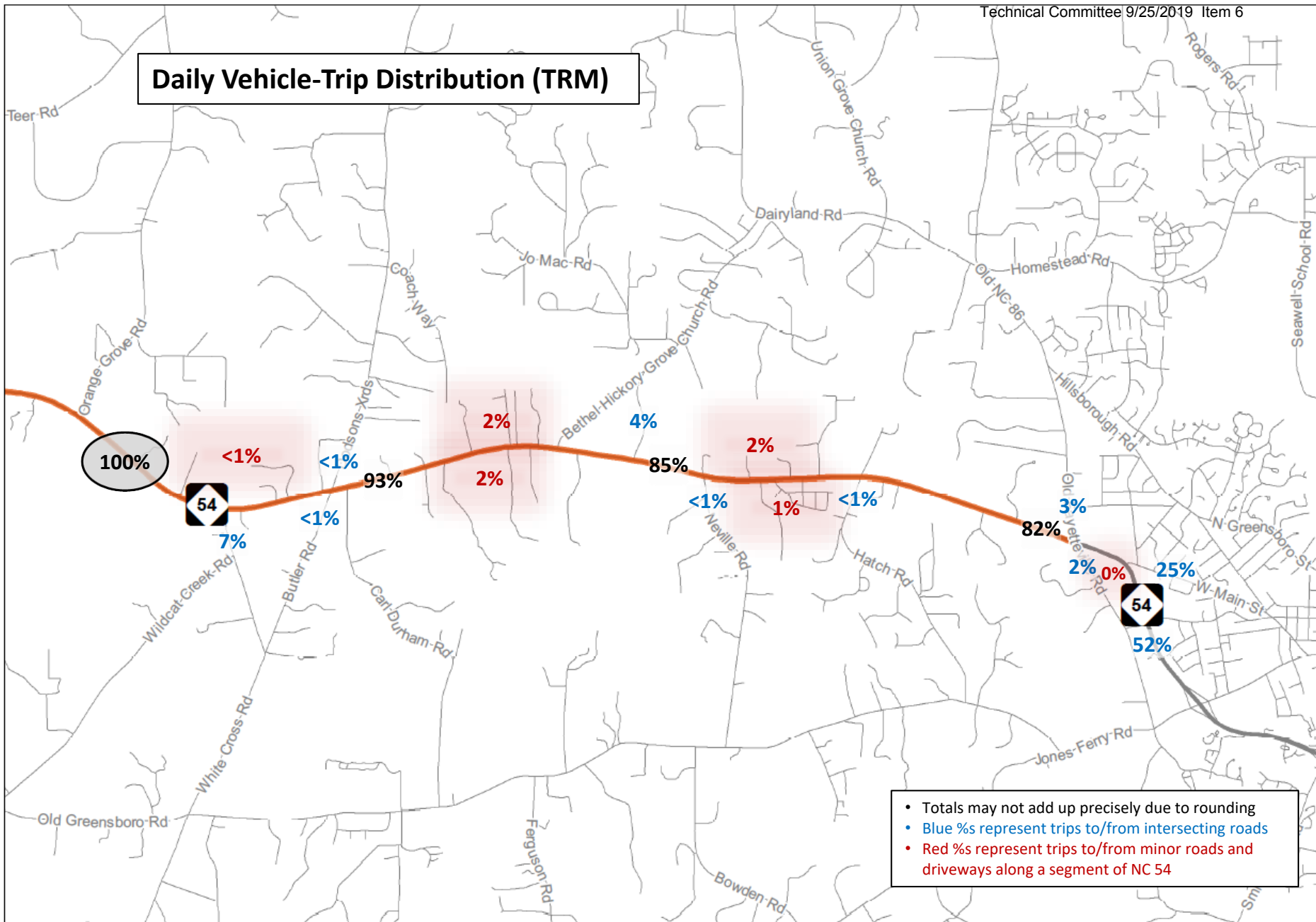
Alamance and Orange Counties

- 5 Mile Project Buffer
- Project Corridor
- Employment 2017 v 2045**
- 1 Dot = 50
- Employment 2017 to 2045
- Employment 2017

TRM & PTRM Socio-Economic Data (2013-2045)

Source Info: NCDOT, VHB, NCOneMap, Alamance County, Orange County

Daily Vehicle-Trip Distribution (TRM)



- Totals may not add up precisely due to rounding
- Blue %s represent trips to/from intersecting roads
- Red %s represent trips to/from minor roads and driveways along a segment of NC 54



Figure 12: TRM Select Link Analysis – NC 54 East of Orange Grove Road

Daily Vehicle-Trip Distribution (StreetLight InSight Data)

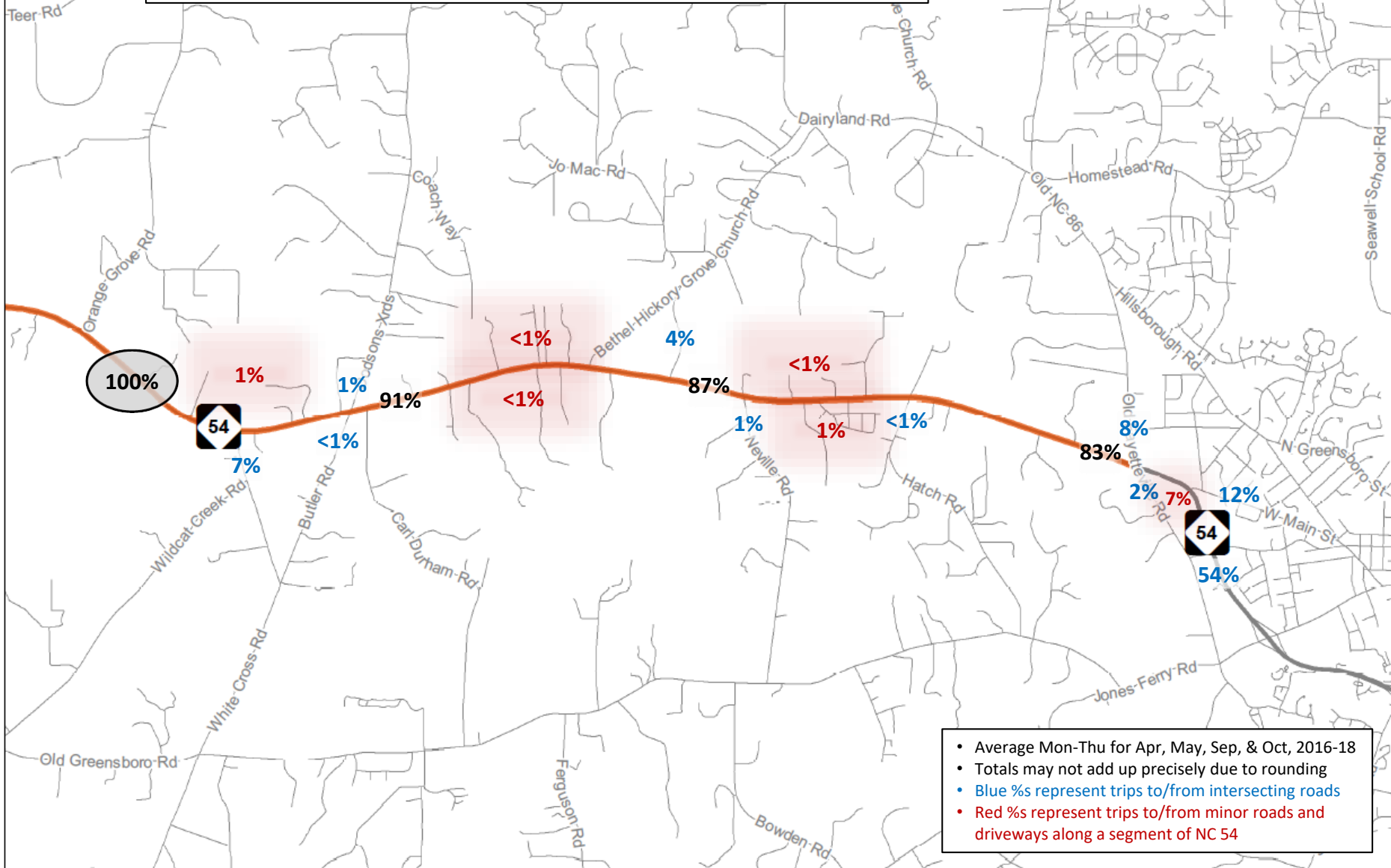


Figure 6: Origin-Destination Analysis – NC 54 East of Orange Grove Road



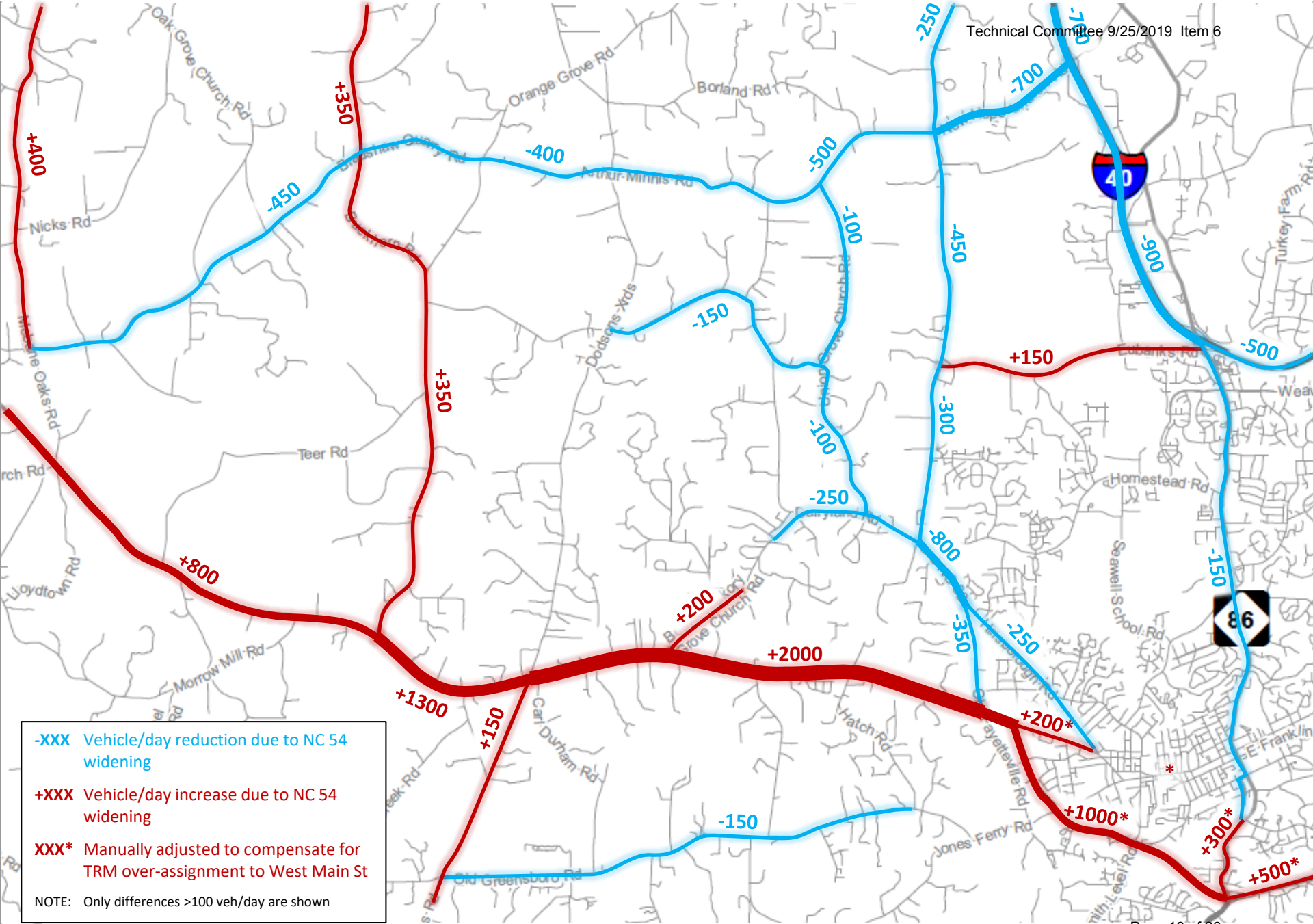


Figure 13: TRM – Daily Traffic Differences between 2045 NC 54 Widened and No-Build Scenarios



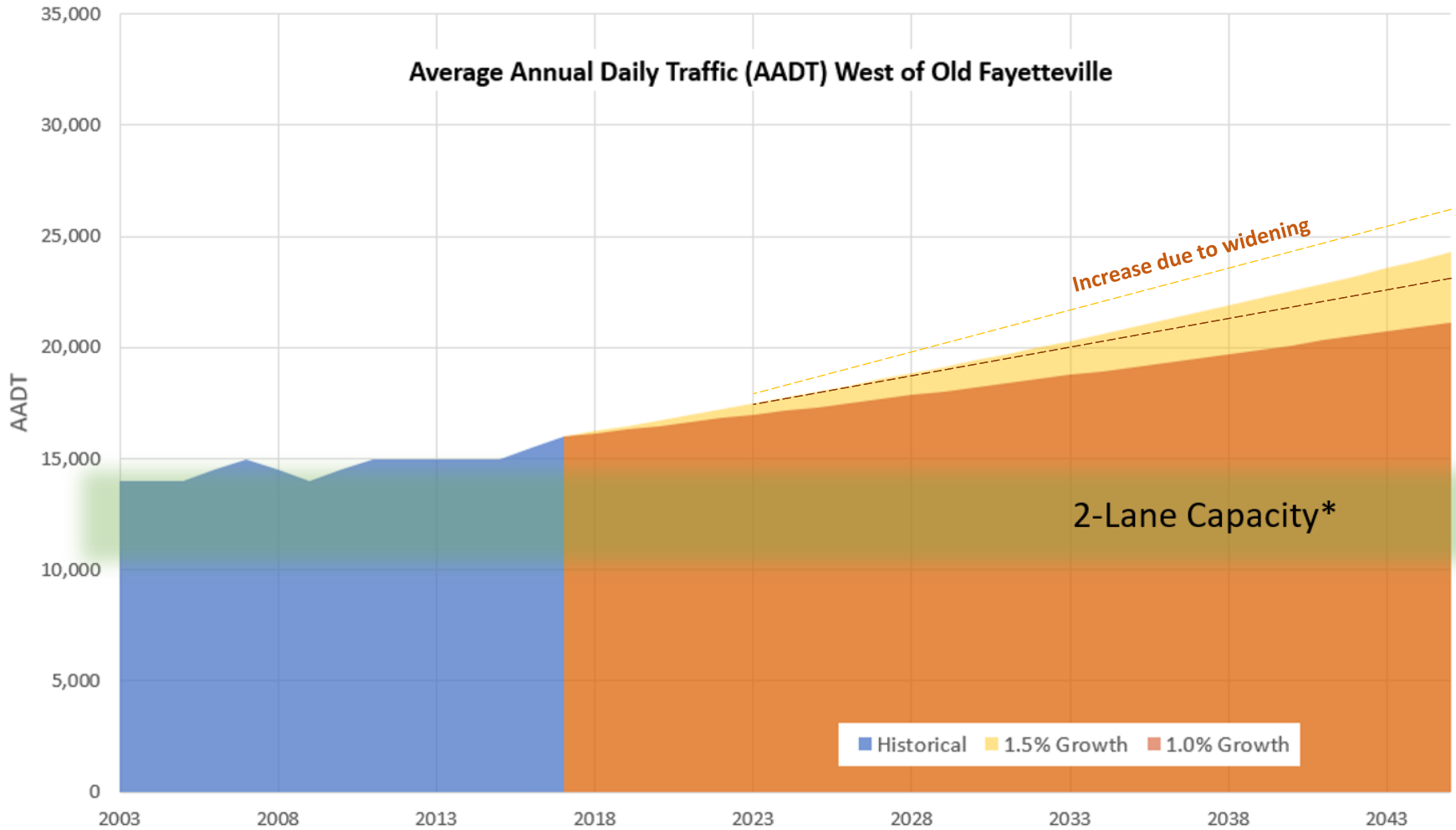


Figure 14: Comparison of 2045 Build and No-Build Scenarios Relative to 2-Lane Capacity Roadway

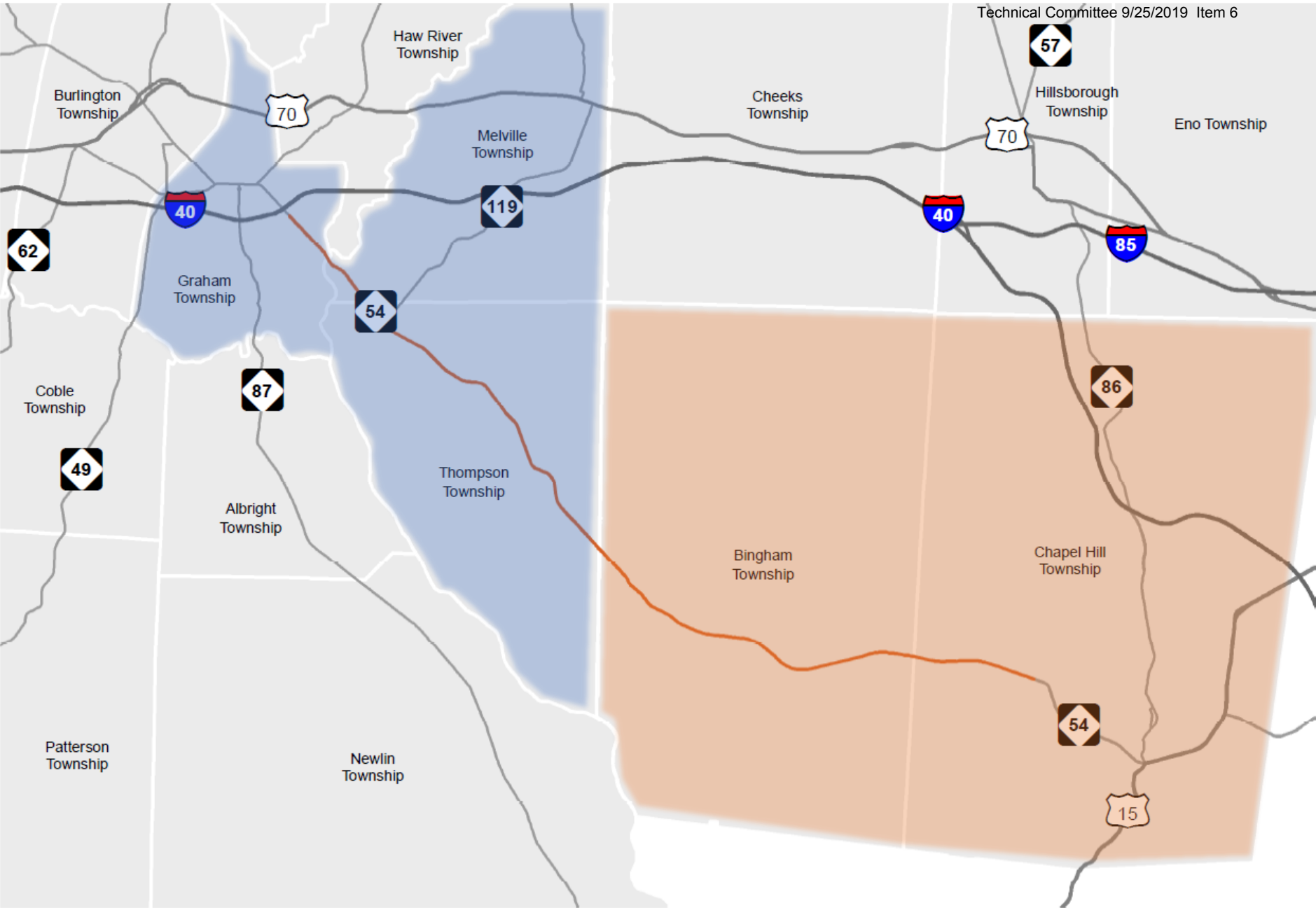


Figure 15: Areas Included in Population-AADT Correlation Analysis

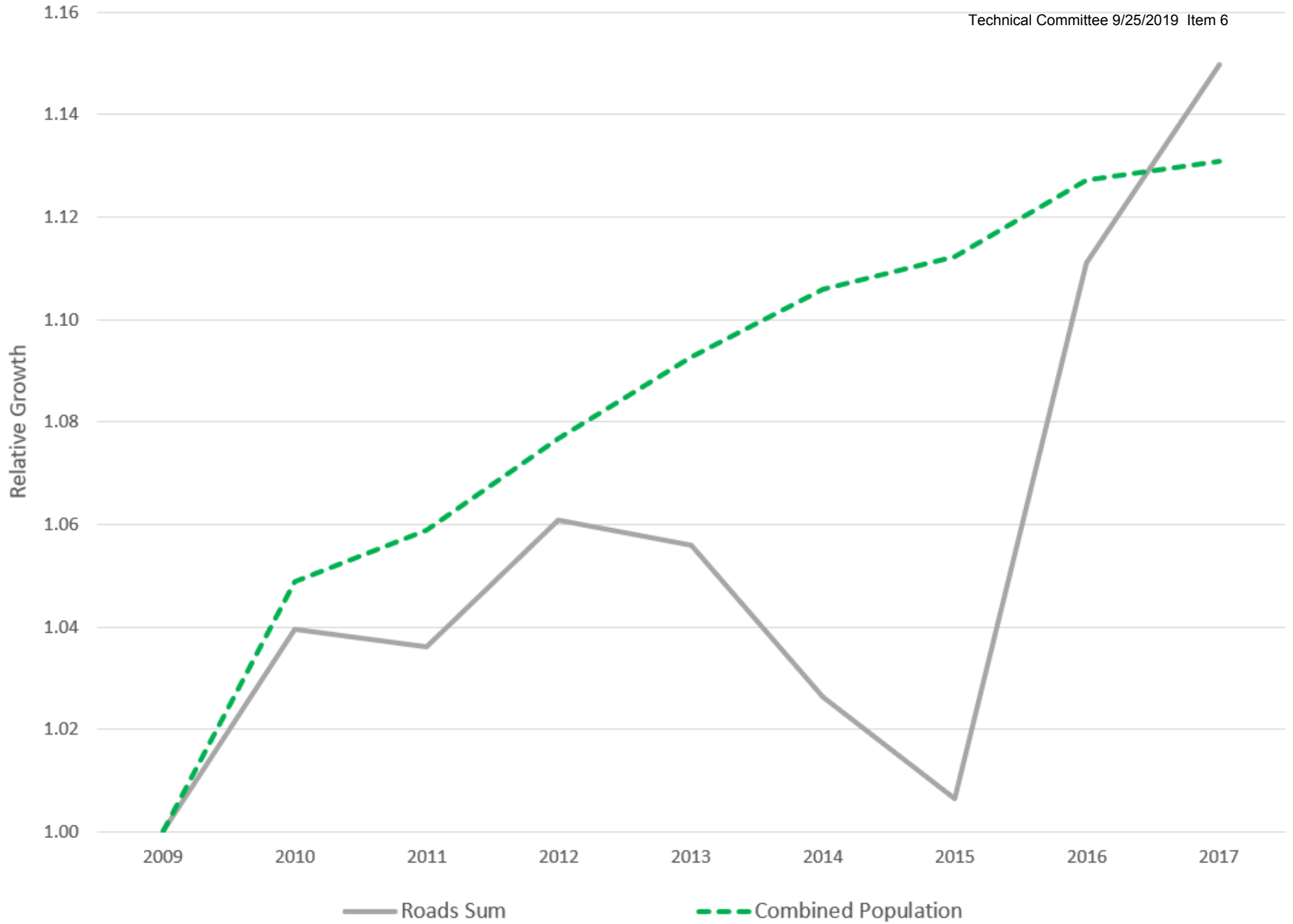


Figure 16: Comparison of Historical Population and AADT Aggregations

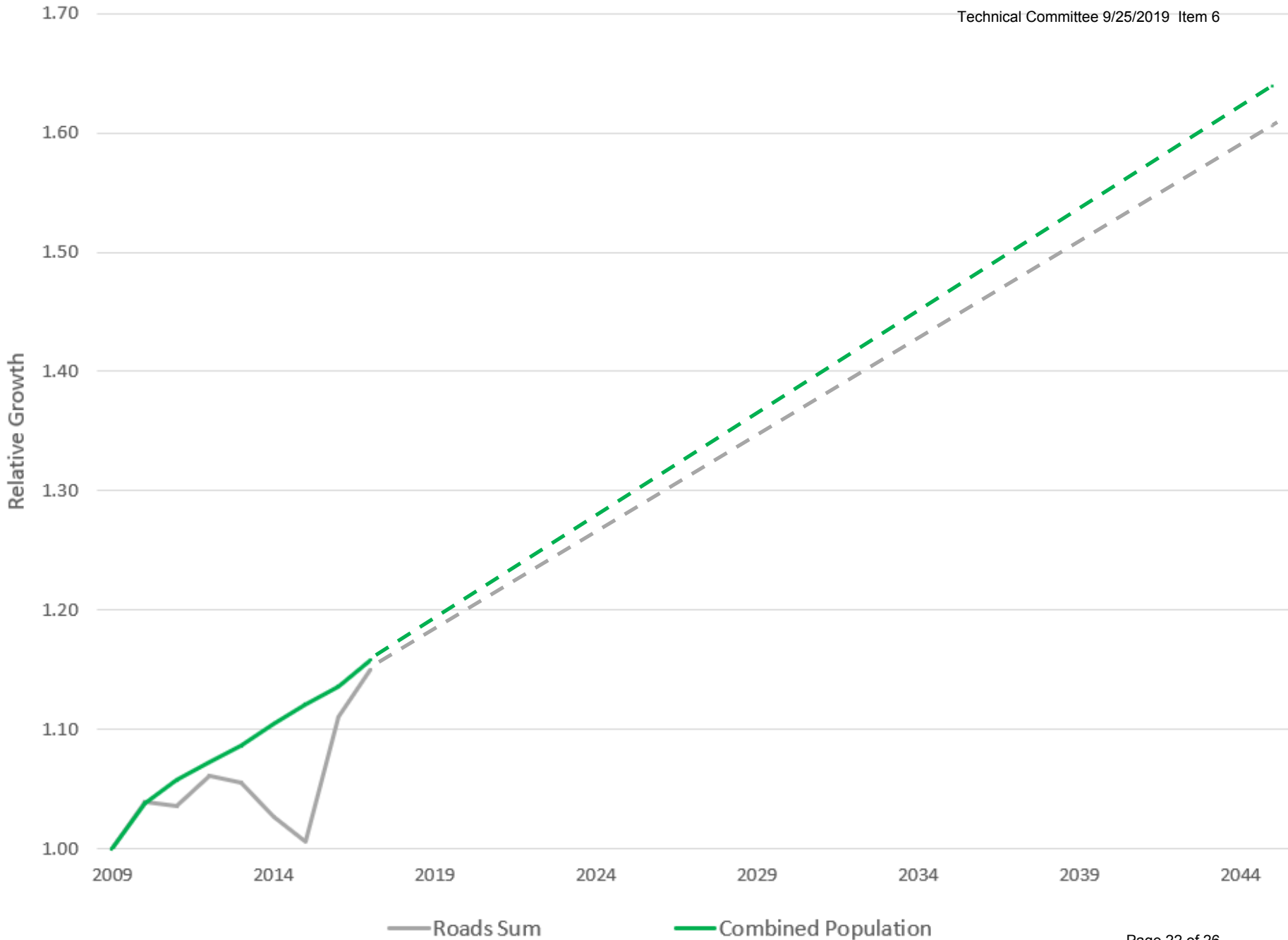


Figure 17: Comparison of Aggregated Population and AADT Forecasts

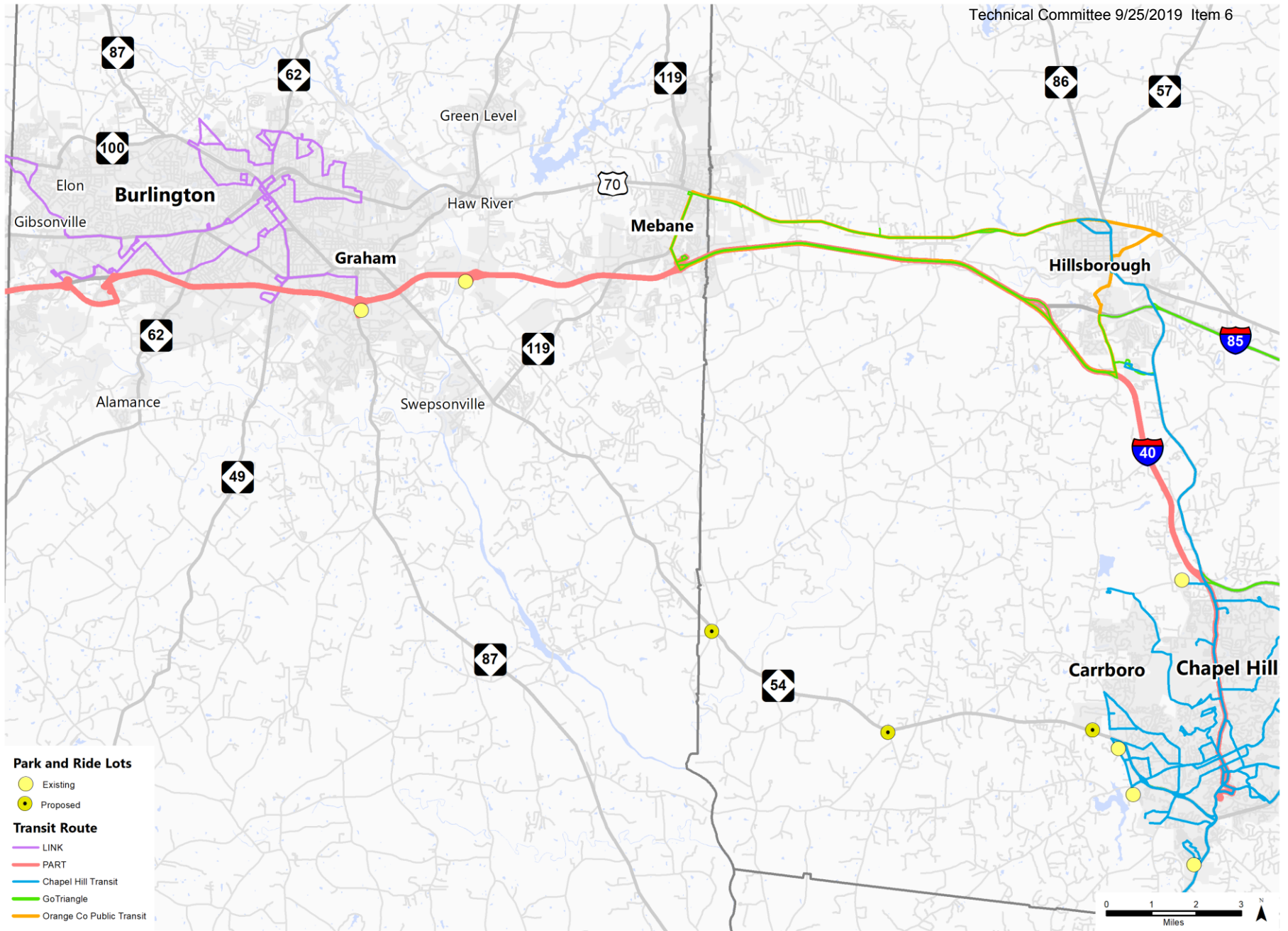
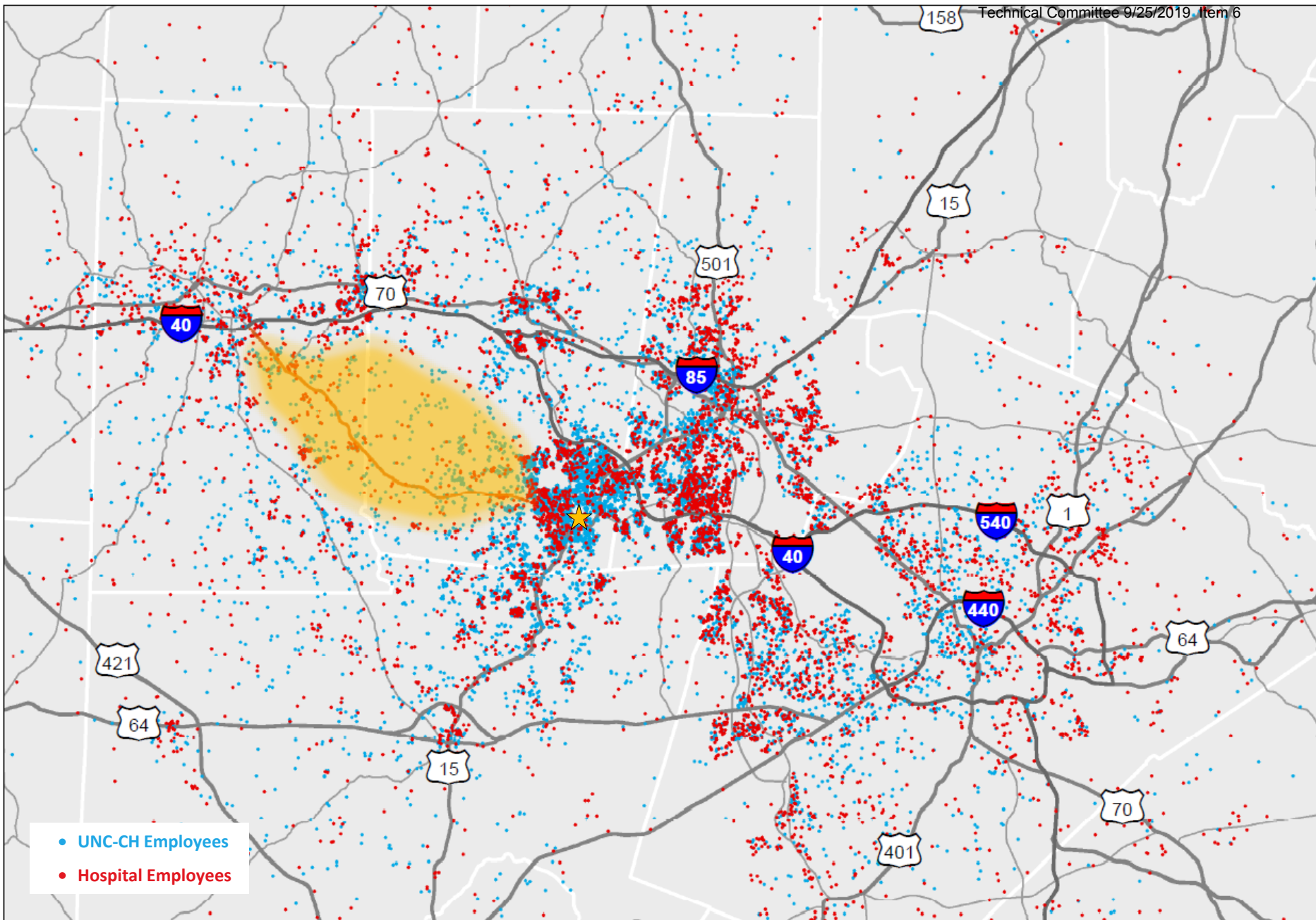


Figure 18: Transit Routes and Park-&-Ride Lots



Source: UNC-CH Development Plan 2017 TIA Update



Figure 19: Regional Distribution of UNC-CH and Hospital Employee Residences (2017)

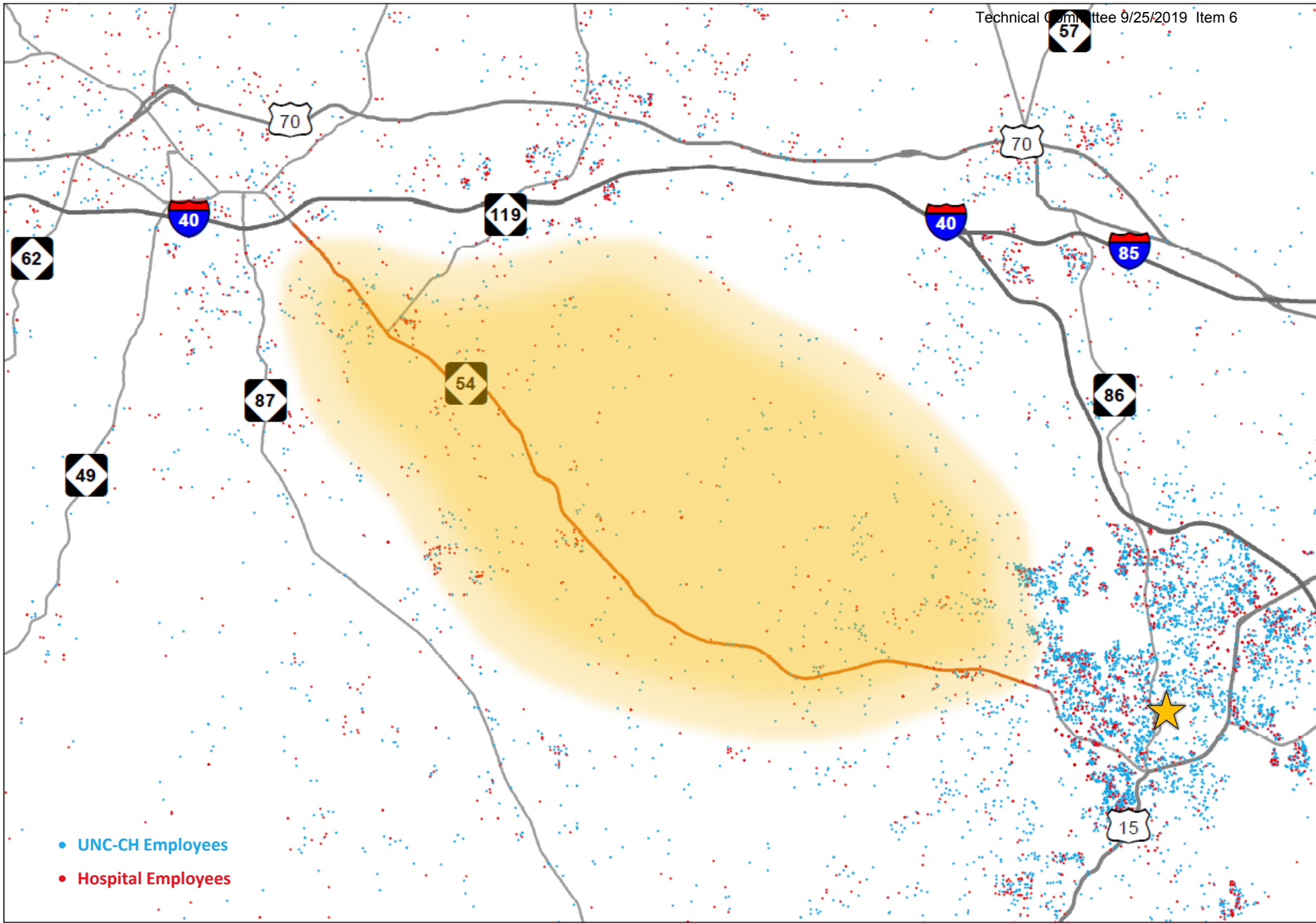


Figure 20: Study Area Distribution of UNC-CH and Hospital Employee Residences (2017)

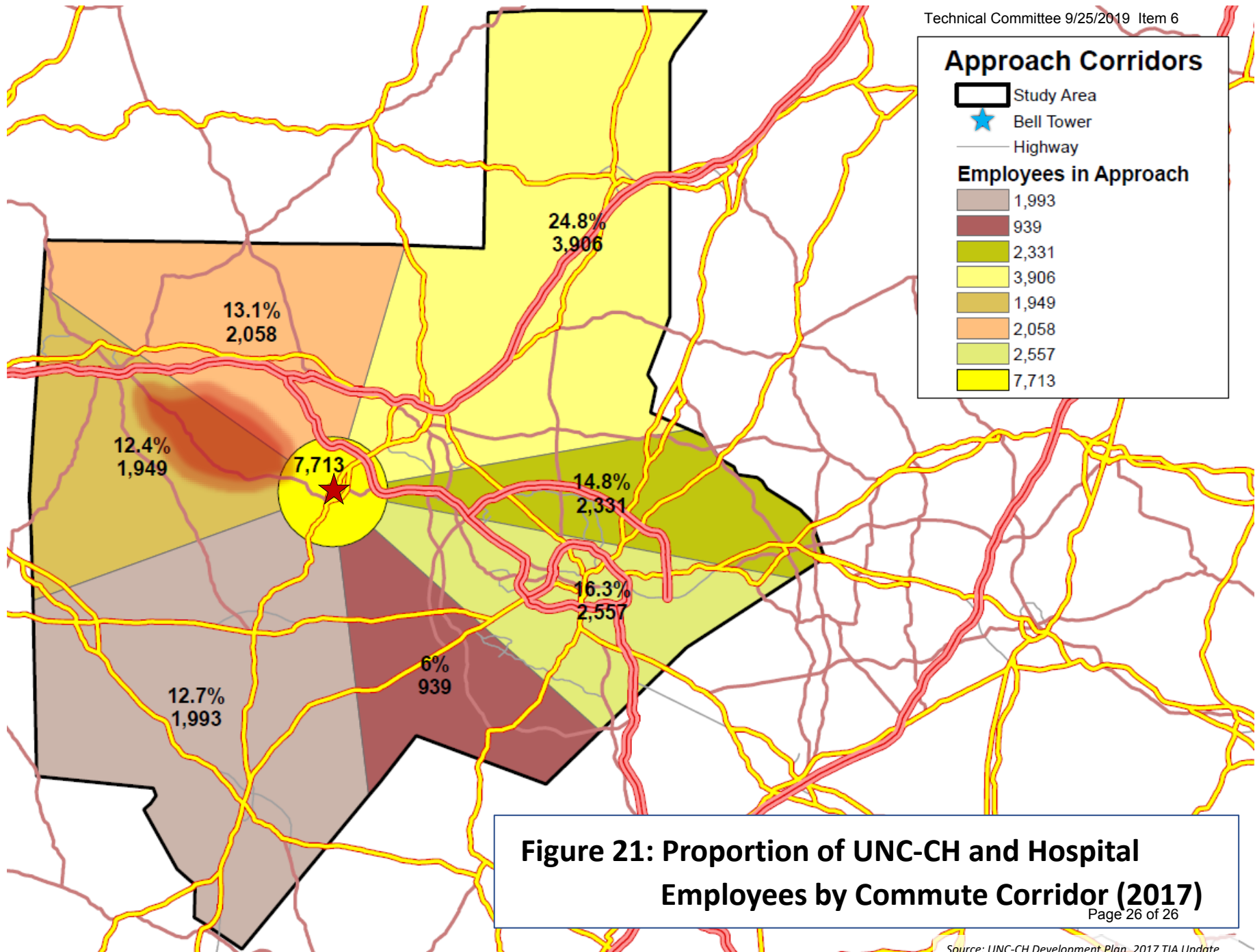


Figure 21: Proportion of UNC-CH and Hospital Employees by Commute Corridor (2017)