

Congestion Management Process Sub-Committee Meeting For Study Area/CMP Corridor

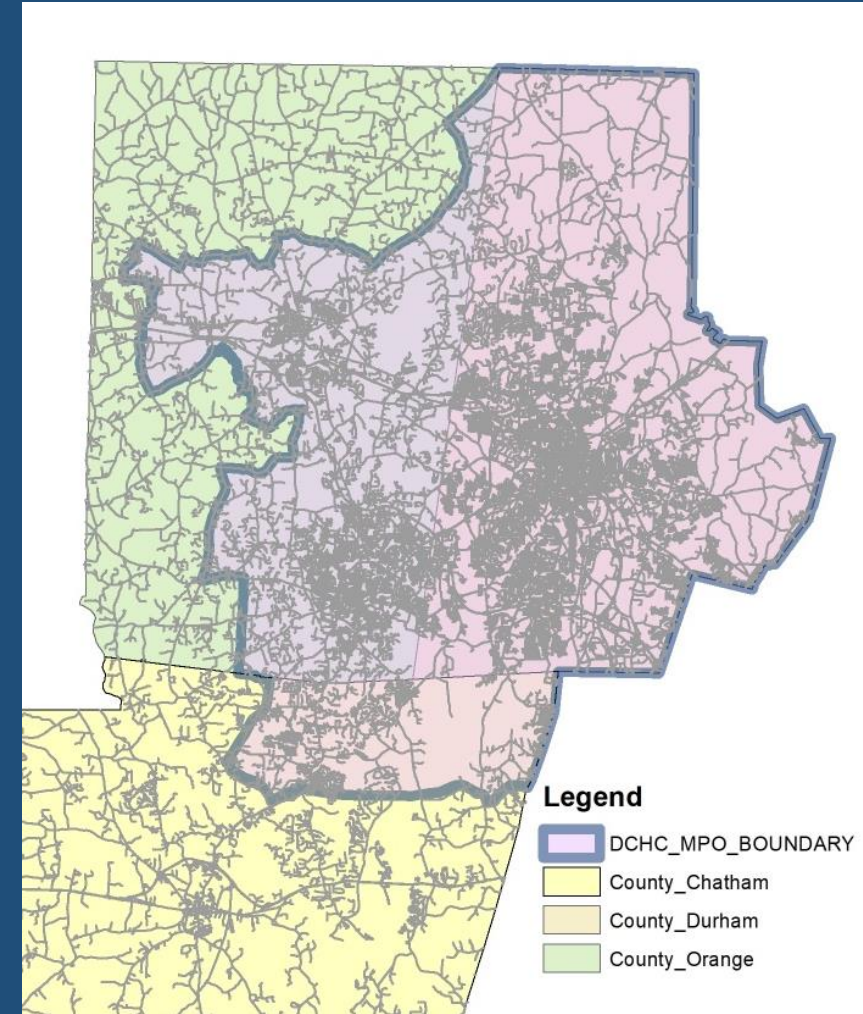
Jaehoon Kim, Yanping Zhang

Monday, Mar. 21, 2022

Durham-Chapel Hill-Carrboro MPO

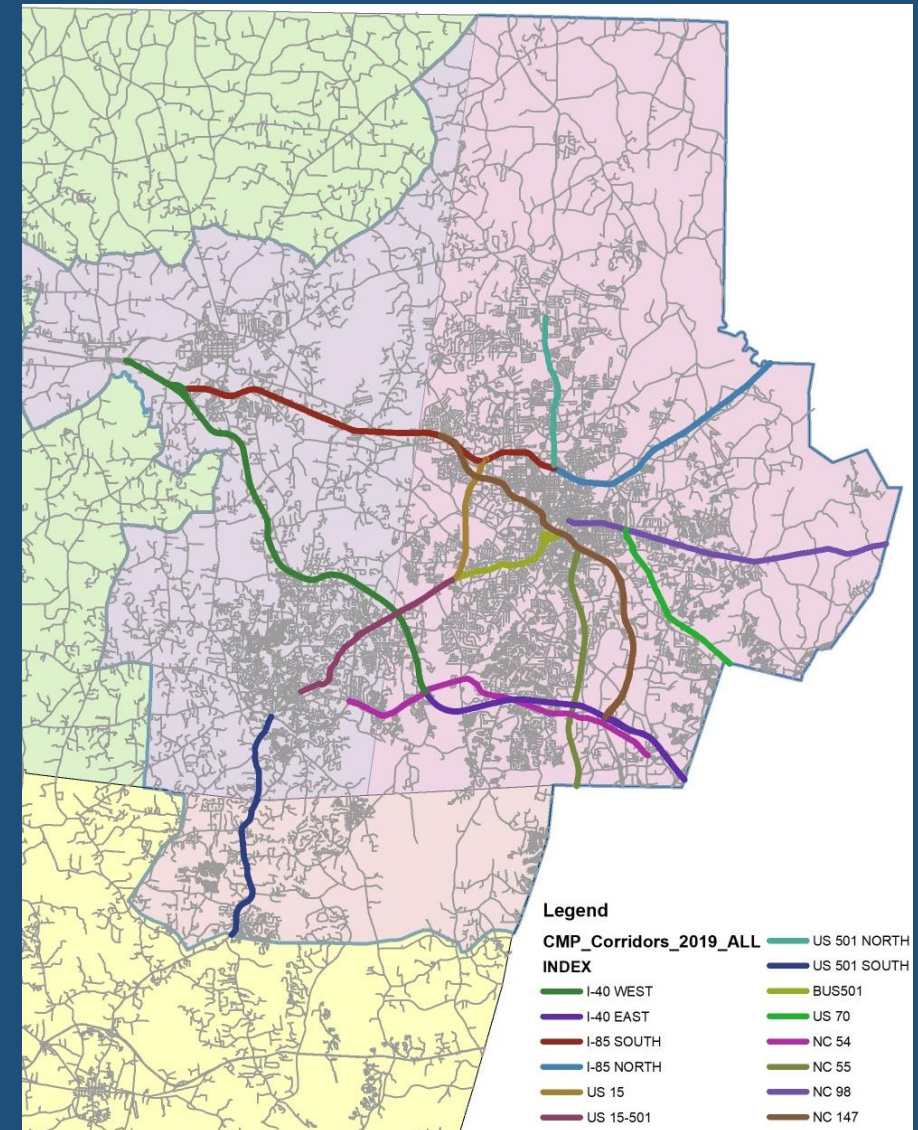
CMP STUDY AREA

- DCHC MPO consists of Durham County, and portions of Orange and Chatham County.
- In previous CMPs, the study area was same as the designated MPO area
- What's Issue?
 - 2020 CENSUS was conducted
 - Expected MPO planning area modified
 - This CMP should be done by mid of 2023.
- It is necessary to discuss the study area of CMP



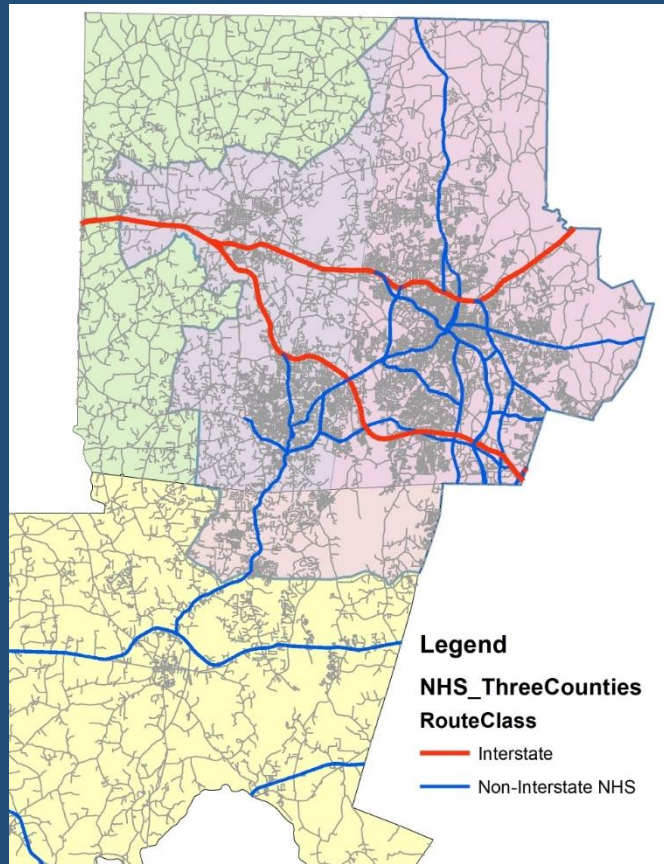
CMP CORRIDORS

- CMP Corridors in 2019 CMP Report
 - 14 Corridors Selected
- List of 2019 CMP Corridors
 - I-40 West/East
 - I-85 North/South
 - US 15
 - US 15-501
 - US 501 North/South
 - BUS 501
 - US 70
 - NC 54
 - NC 55
 - NC 98
 - NC 147

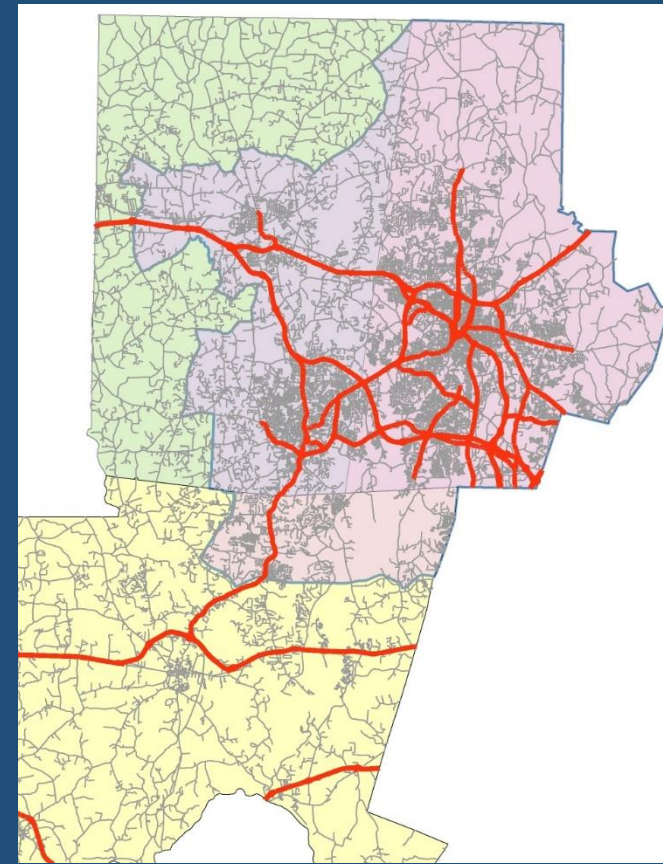


CMP CORRIDORS – DCHC MPO NETWORK REVIEW

National Highway System



Principal Arterials



CMP CORRIDORS – CMP CORRIDOR SELECTION

- Almost Principal Arterials are overlapped with the NHS
- 2019 CMP Corridors are overlapped with the P.A or NHS except for 1 corridor (US 501 South)
- Need to discuss how we refine the CMP corridors for 2023 CMP Report
- Option
 - Option 1: Keep same the list of corridors
 - Option 2: EXTEND KEY CORRIDORS if necessary
 - Option 3: Redefine all CMP corridors based on new criteria

CMP CORRIDORS – OPTION 2: EXTEND CORRIDORS

- Option 2: Extend some corridors to expected or necessary area over the current MPO boundary
- Pros
 - Possible to include all segments of a specific project such as US-70 (Orange County), including the segments in City of Mebane.
- Cons
 - Uncertainty of the MPO border line (will be changed in Fall)

CMP CORRIDORS – OPTION 3: REDEFINE CMP CORRIDORS

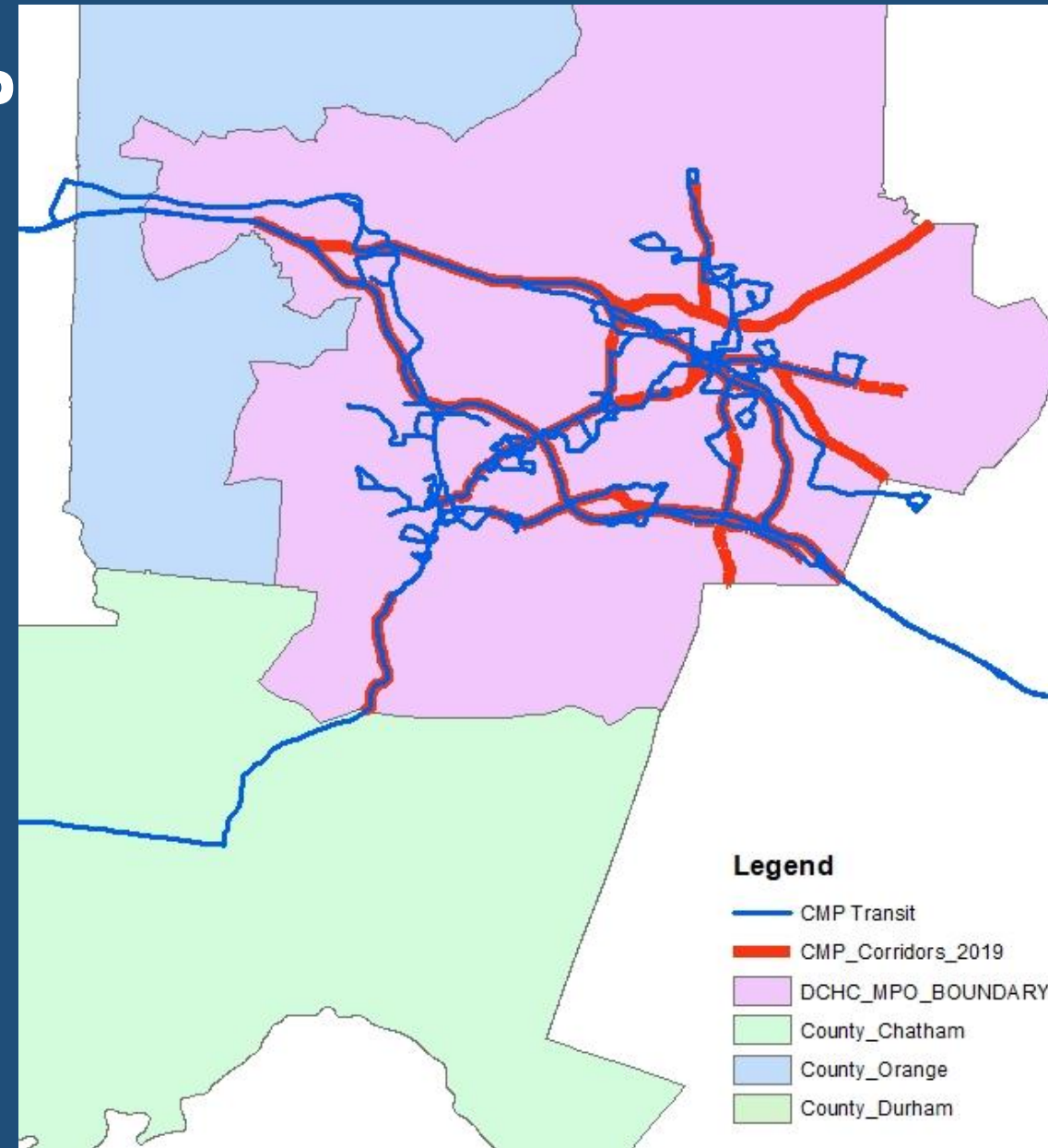
- Option 3: Redefine criteria of CMP Corridor Selection Process and reselect 2023 CMP Corridors
- Pros
 - Rebuild CMP Corridor selection process that satisfies needs of various agencies
 - Available to keep using new process for future CMP projects
- Cons
 - Need more time to develop new criteria and to identify new CMP corridors
- MPO Staff Recommendation
 - NOT Recommend

CMP TRANSIT NETWORK MAP

- Plan to incorporate a subset of transit routes that are relevant to the CMP Corridors
- Selecting Criteria
 1. Selecting Transit Routes serving trips made in DCHC MPO area: 123 fixed bus routes selected

AND

 2. Further selecting Transit Routes serving trips made ON or CLOSE to the CMP corridors



CMP TRANSIT ROUTES

- Some routes may have relatively low ridership
- Routes with High Ridership in **RED**
 1. Express Routes with 4-hr PK Commuters > 50
OR
 2. Routes with Daily Ridership > 500

CMP Transit Routes

GoTriangle	Chapel Hill Transit	GoDurham	PARTS	Chatham Transit
400	A	3, 3B		CT 4Express
405	CCX	3C		
700	CL	4		
800	D	11		
800S	F	12		
805	FCX	2A, 2B		
CRX	HS	2C		
DRX	NS	9A, 9B		
ODX	S	10A, 10B		
420	T			
	V			

###: 1) Express Routes with 4-hr PK Commuters > 50 or
2) Routes with Daily Ridership > 500

DATA REQUEST

- DCHC MPO needs INTERSECTION ANALYSIS RESULTS from local governments for CMP and Mobility Report Card
- Required Data
 - Intersection LOS Analysis Results (Excel Format)

	A	B	C	D	E	F	G	H	I	J	K	L	M	N
1	County	Agency	MPO ID	Prefix	Route	Location	AM LOS 18	AM LOS 19	AM LOS 20	AM LOS 21	PM LOS 18	PM LOS 19	PM LOS 20	PM LOS 21
2														
3														
4														
5														

- Intersection Analysis Software Input/Output file (TransModeler or Synchro)
- Data Time Range: Available data from Y2018 to Y2021
- May request intersection turning movement counts when needed