



## Today's Objectives

1. Understand CTP contents and review process
2. Release CTP for 3-month public comment period

November 16, 2016

# Long Range Plan History

## State

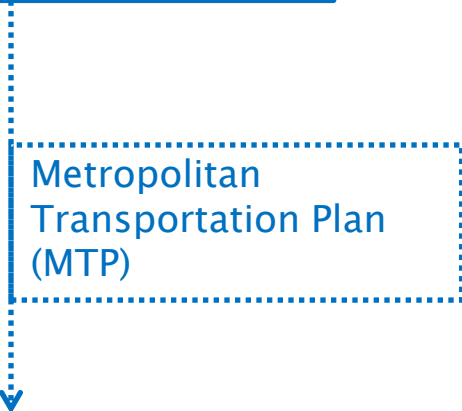
## Federal

**Thoroughfare Plan**  
Single map of all highways.  
Not fiscally constrained.  
Used for development review.

**2001 -- Comprehensive Transportation Plan (CTP)**  
Maps of all highway, transit, bike, pedestrian and rail facilities.  
Not fiscally constrained.  
Used for development review.

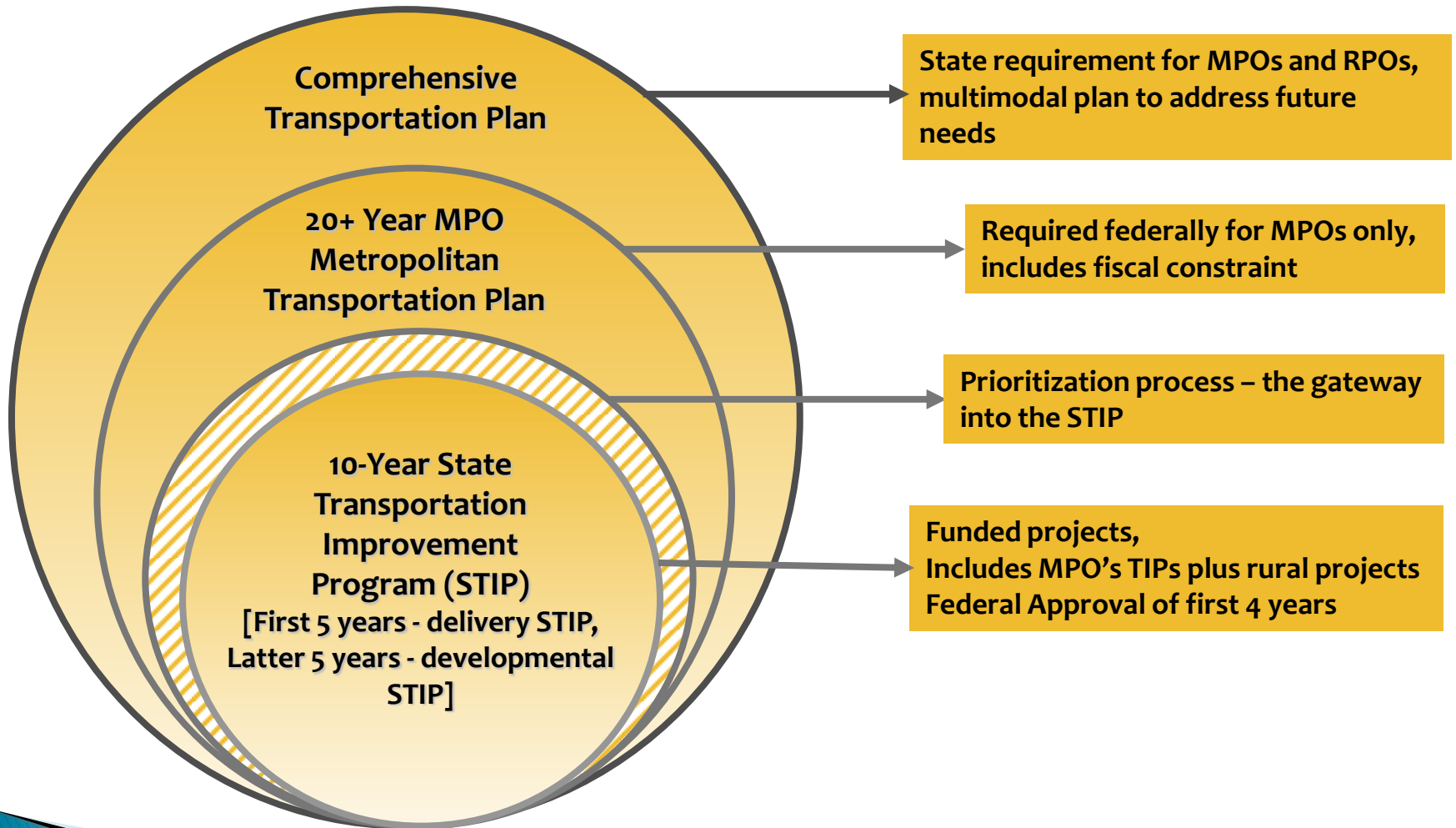


**1991 - ISTEA - Long Range Transportation Plan (LRTP)**  
Fiscally constrained. Projects.  
State/MPO TIP has to be subset of LRTP.



**Metropolitan Transportation Plan (MTP)**

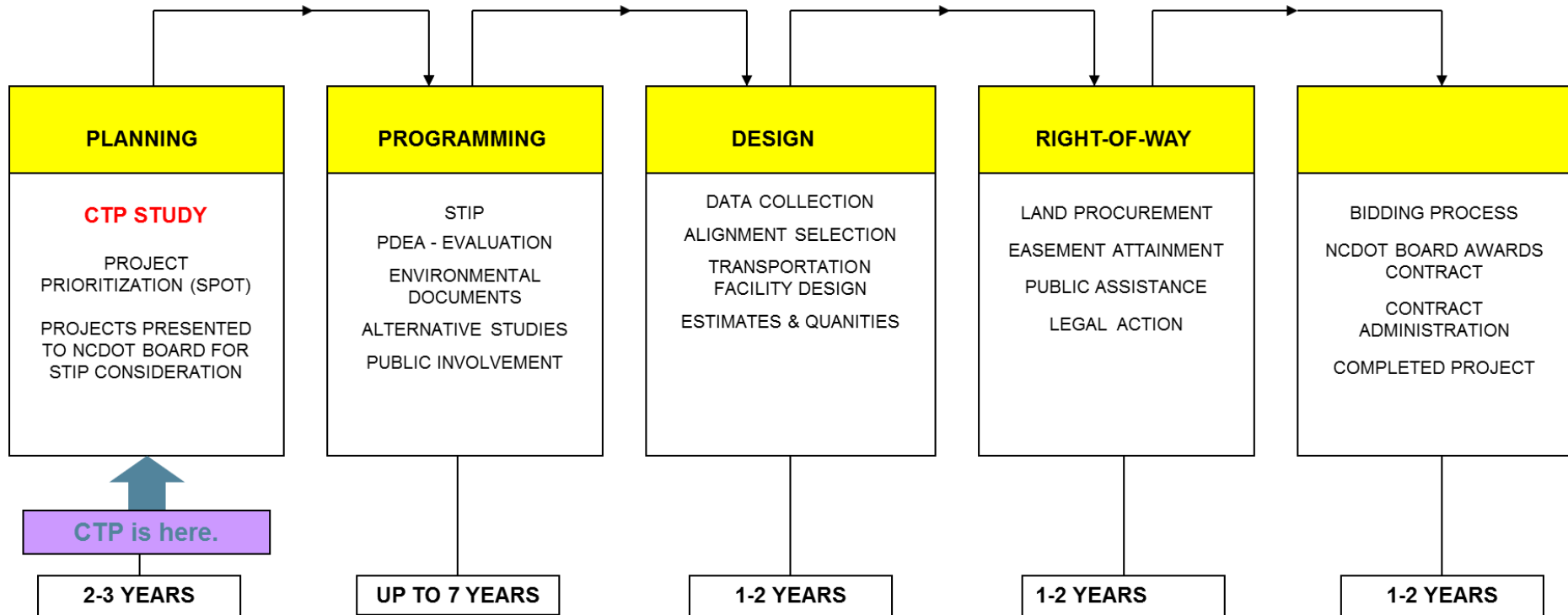
# Transportation Planning Framework



# Transportation Planning Framework

(Continued)

## *Typical Stages of NCDOT Project Development*



# Replace T-fare Plans

- CTP will replace old Thoroughfare Plans:

Thoroughfare Plans:

- Durham, 1992;
- Chapel Hill, 1994;
- Carrboro, 1994;
- Hillsborough, 1996;
- Chatham County, 1983;
- Orange County, 1990 (not adopted).

- Local government typically use T-fare/CTP to:
  - Reserve road right-of-way in dev't review
  - Permit certain types of uses, e.g., industrial
  - Direct roadway design, e.g., allow speed humps

# What is Adopted?

## NCDOT Bd. of Transportation

- Adopts only the maps
  - Shows needs improvement/recommended
  - Shows roadway type
  - Map notes : 1) Use for dedicating ROW; 2) Final location and design results from environmental review; 3) Complete Streets
- Receives link to backup information such as tables of project segments

# What is Adopted?

(Continued)

## MPO Board

- Adopts the maps at a minimum
- Staff recommends adoption of full report, including:
  - Tables of project segments
  - Problem statements
  - MPO policy, e.g., Complete Streets

## Local Government

- Do not need to take any action
- Suggest that endorse CTP with comments



# Public Input

- **Drop-in Meetings**
  - ✓ 2 in Durham, 1 in CH/Carrboro, 1 in Hillsborough, 1 in Chatham County
- **Local Elected Officials**
  - ✓ Local staff initiate; MPO/NCDOT staff provide support
- **Local Boards and Commissions**
  - ✓ Local staff initiate; MPO/NCDOT staff provide support



# CTP Schedule

- ✓ **January 2015.** Published draft Deficiency Analysis for public comment
- **December 2016.** Release draft CTP for public comment
- **Jan./ Feb. 2017.** Conduct public workshops and public hearing
- **Jan/ Feb. 2017.** Local review
- **March 2017.** MPO Board adopt CTP
- **April 2017.** NCDOT adopt final plan

# CTP Review

## There is a lot!

6 maps; 7 tables; dozens of problem statements; 3 more chapters; over 600 highway segments

## There is time!

Three month public review period

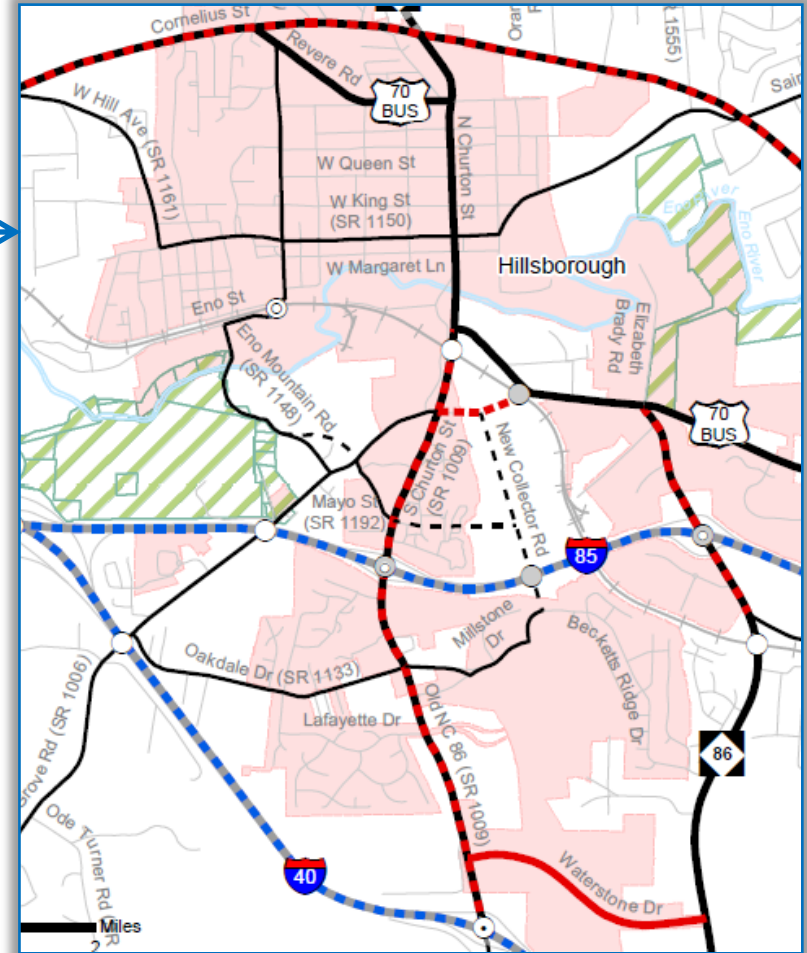
## There is help!

Public, boards and commissions, elected officials, and agency staff will review

# Key Products – Highways

## Maps

- Shows all roadways that are minor thoroughfare and above, not just the ones that are to be improved
- Designates roadway type



<b>Freeways</b>		<b>Other Major Thoroughfares</b>	
	Existing		Existing
	Needs Improvement		Needs Improvement
	Recommended		Recommended
<b>Expressways</b>		<b>Minor Thoroughfares</b>	
	Existing		Existing
	Needs Improvement		Needs Improvement
	Recommended		Recommended
<b>Boulevards</b>		<b>Grade Separations</b>	
	Existing		Existing
	Needs Improvement		Needs Improvement
	Recommended		Recommended
		<b>Interchanges (or Intersections)</b>	
			Existing
			Needs Improvement
			Recommended



# Key Products – Highways

(continued)

## Main Table

Facility	Segment		Jurisdiction	2015 Existing System						2040 Proposed System				CTP Class	Problem Statement
	From	To		Dist. (mi)	Lanes	ROW	Width	Existing Capacity (vpd)	2015 Volume	2040 Volume E+C	2040 V/C	Status	Cross-Section		
NC 751	Renaissance Pkwy	Stagecoach Rd	DurCity, Dur	0.9	2	60-90	19-24	12,700	12,000	18,777	1.5	NI	4D	Blvd	None
NC 751	I-40	Renaissance Pkwy	DurCity	0.2	2	60	24	12,700	26,618	41,544	3.3	Ex	ADQ	Maj	UAD
NC 751	I-40	Southpoint Autopark Blvd	DurCity	0.2	4	60	24	36,600	15,000	30,622	0.8	Ex	ADQ	Blvd	None
NC 751	Southpoint Autopark Blvd	NC 54	DurCity	0.8	2	60	24	12,700	15,000	30,622	2.4	NI	4D	Blvd	None

- 2040 volume and volume/capacity (i.e., congestion level)

- Projected future cross-section. Abides by Complete Streets. Remember: environmental process determines ultimate cross-section design.

## Other

- Problem statements – Eight Full and thirty-one minimum statements; explains why improvements are needed
- Unaddressed needs – explains why roadway that is over capacity does not have improvements designated

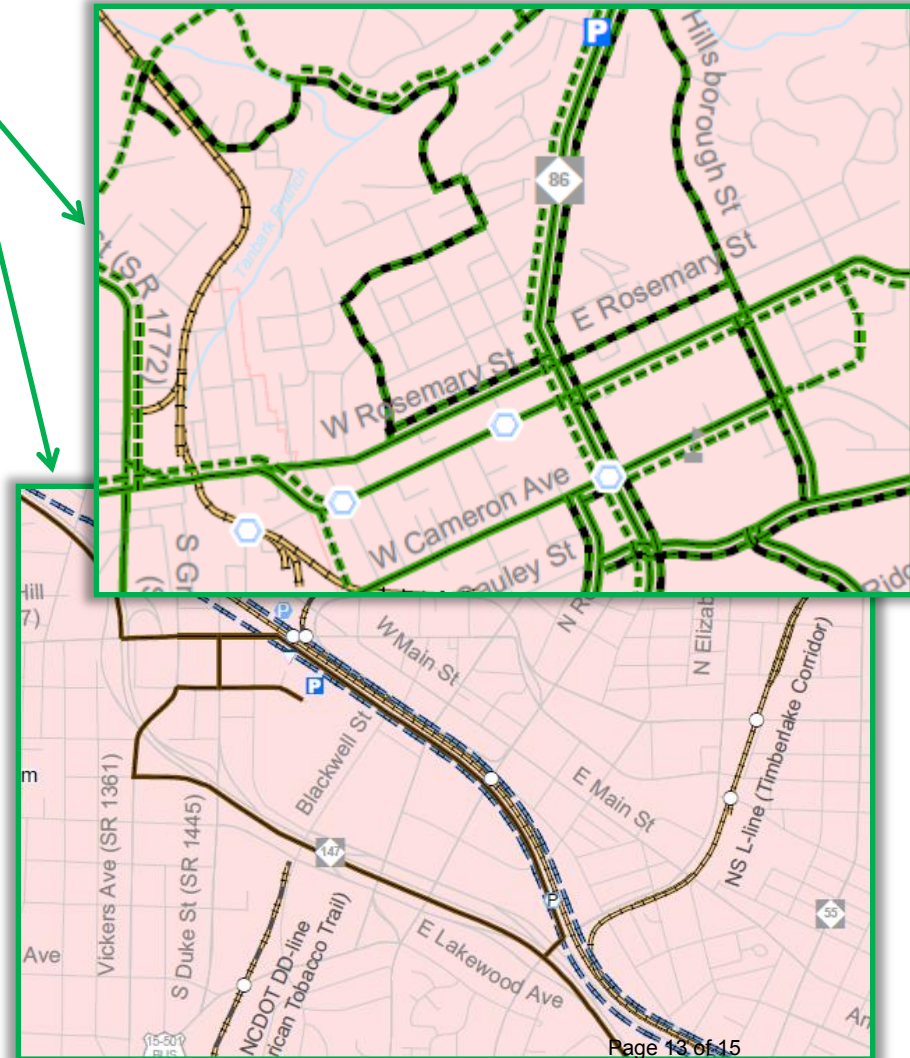
# Very Thorough!

# Key Products – Public Transportation and Rail

- Bus and rail maps and tables
- Designates stations, centers and park and ride



<b>Bus Routes</b>	<b>Rail Corridor</b>
Existing	Active
Needs Improvement	Inactive
Recommended	Recommended
<b>Multimodal Connector</b>	<b>Park and Ride Lot</b>
Existing	Existing
Recommended	Recommended
<b>Rail Stations</b>	<b>Rail Stations with Park and</b>
Existing	Existing
Recommended	Recommended
<b>Transit Center</b>	<b>Transit Center with Park and</b>
Existing	Existing
Recommended	Recommended





# Key Products – Public Transportation and Rail

- Bus and fixed guideway maps and tables
- Designates bus express routes, stations, centers and park and ride

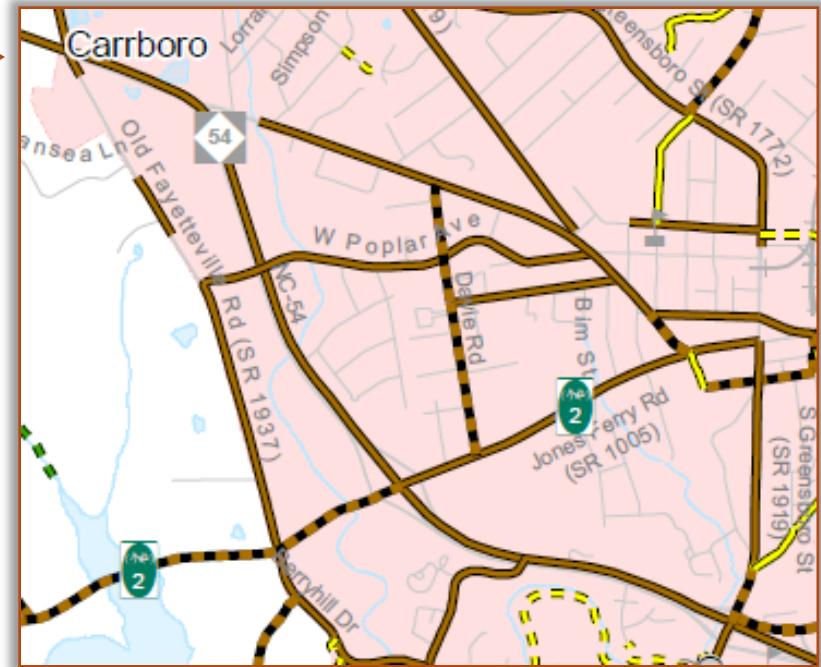
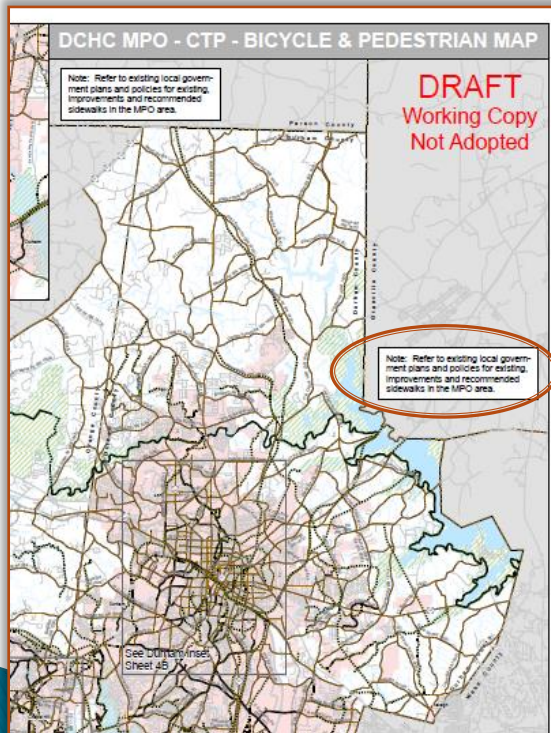
(continued)



<b>Fixed Guideway</b>	<b>Rail Corridor</b>	<b>Operational Strategies</b>
Existing	Active	Existing
Needs Improvement	Inactive	Needs Improvement
Recommended	Recommended	Recommended
<b>Multimodal Connector</b>	<b>Park and Ride Lot</b>	<b>Grade Separations</b>
Existing	Existing	Existing
Recommended	Recommended	Needs Improvement
		Recommended
<b>Rail Stations</b>	<b>Rail Stations with Park and Ride Lot</b>	Hospitals
Existing	Existing	Schools
Recommended	Recommended	Airports
<b>Transit Center</b>	<b>Transit Center with Park and Ride Lot</b>	
Existing	Existing	
Recommended	Recommended	

# Key Products – Bike, Pedestrian and Paths

- Map
- Tables



- Future sidewalks might not be on map. A policy statement will require sidewalks.