



Draft Environmental Justice Report

Anne Phillips, LPA Staff



Statutory Framework for EJ Report

Title VI of the Civil Rights
Act of 1964

Executive Order 12898 of
1994: Federal Actions to
Address Environmental
Justice in Minority
Populations and Low-
Income Populations

USDOT Planning
Requirements

Key Terms

Environmental Justice

The fair treatment and meaningful involvement of all people regardless of race, color, national origin, or income, with respect to the development, implementation, and enforcement of environmental laws, regulations, and policies

Communities of Concern

A geographic area where the percentage of any EJ population is greater than the regional threshold for that EJ population



EJ Populations

1. Minority Populations

2. Low-Income Households

3. Elderly Populations

4. Limited English Proficiency (LEP)

5. Zero-car Households

Methodology

- Census block groups analysis
- Regional thresholds were identified for each EJ population based on the percentage of that population in the DCHC region
- Each block group was compared to the threshold for each EJ population
- If a block group exceeded the threshold for that EJ population, it is considered a community of concern

Table 3.1: Regional Thresholds for EJ Population Groups

EJ Communities of Concern	Count	%
Total Population	455,813	
Total Households	182,810	
Racial Minority Population	218,877	48%
Hispanic/Latino Population	53,434	12%
Black Population	126,910	28%
Elderly Population	59,095	13%
Limited English Proficiency Households	7,687	4.2%
Low Income Limit for Households	\$38,920	
Zero-Car Households	12,722	7%

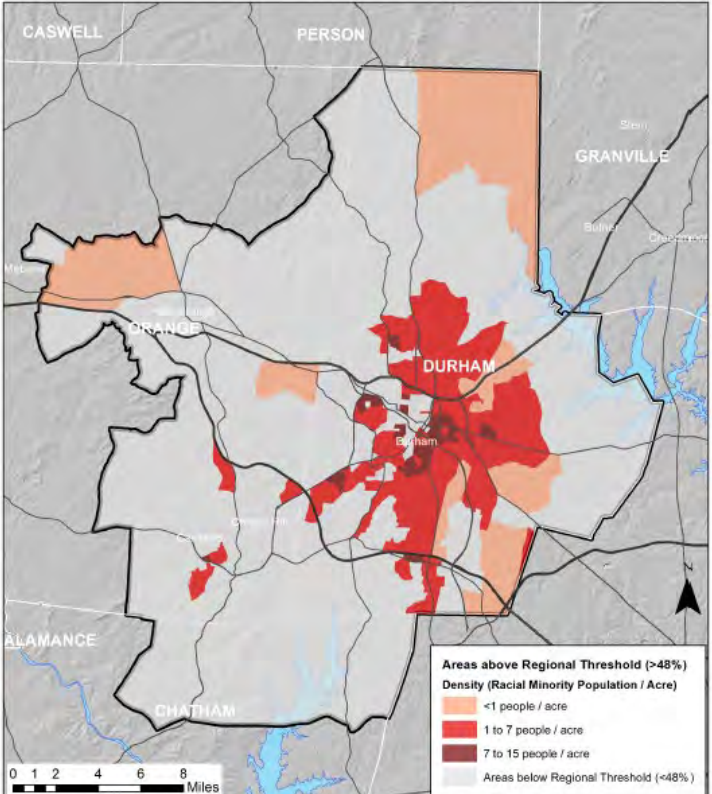
Communities of Concern Summary

Table 3.2: Summary of CoC Block Groups

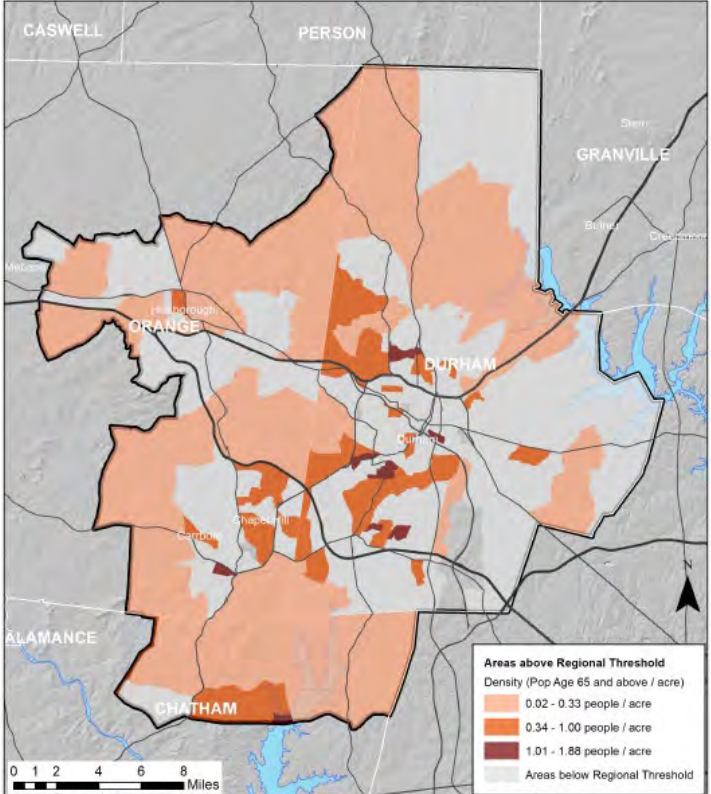
Row #	EJ Populations	Total number of CoC Block Groups	Percent of total Block Groups
1	Any of the three Racial Minority characteristic (a, b or c)	125	53%
1a	Racial Minority Populations (total only)	97	41%
1b	Hispanic/Latino Ethnicity Origins Populations Only	83	35%
1c	Black Populations Only	41	17%
2	Elderly Populations	88	37%
3	Limited English Proficiency Households	86	37%
4	Low-Income Households	52	22%
5	Zero Car Households	83	35%
Averaged Percent of Total Block Groups (sum of Col D (1,2,3,4 and 5) / 5)			37%

Table 3.3: Summary of Overlapping CoC Block Groups

Number of Overlapping Communities of Concern (CoC)	Number of Block groups that contain the number of overlaps in Column A
0 overlap (1 CoC)	81
1 overlap (2 CoCs)	58
2 overlaps (3 CoCs)	39
3 overlaps (4 CoCs)	28
4 overlaps (5 CoCs)	5
Total	209

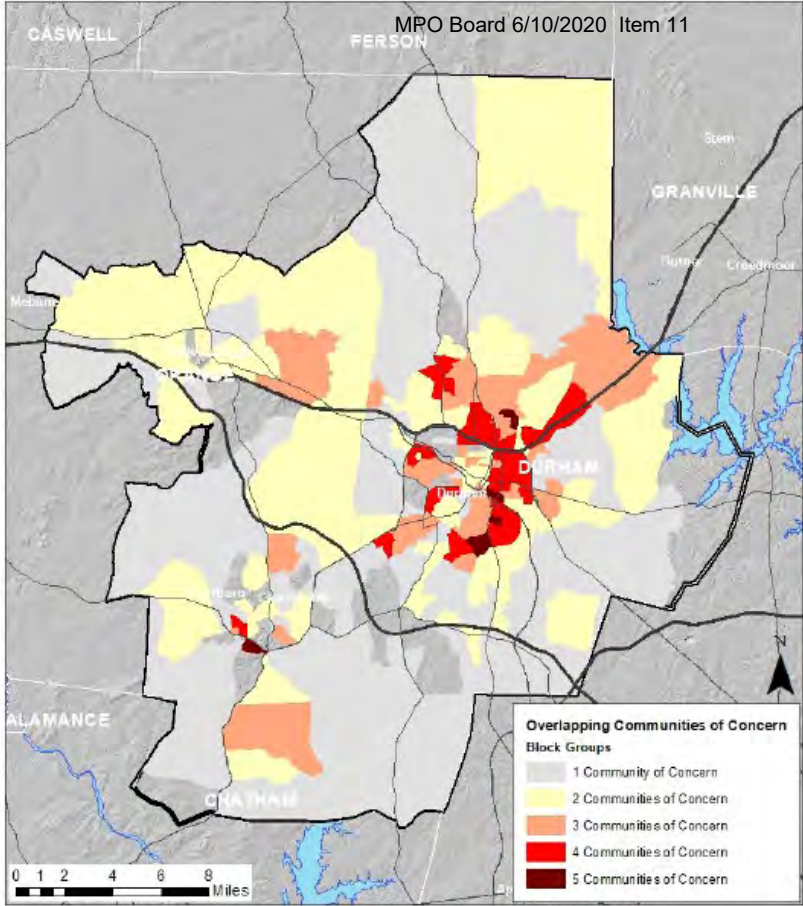


Map 3.2: Percent of Population: Racial Minority
Census Block Groups where percentage of racial minority population is higher than the regional threshold of 48%.



Map 3.5: Percent of Population: Elderly (65 Years of Age or Older)
Census Block Groups where percentage of population of age 65 years and above is greater than 13.3%.

Overlapping Communities of Concern

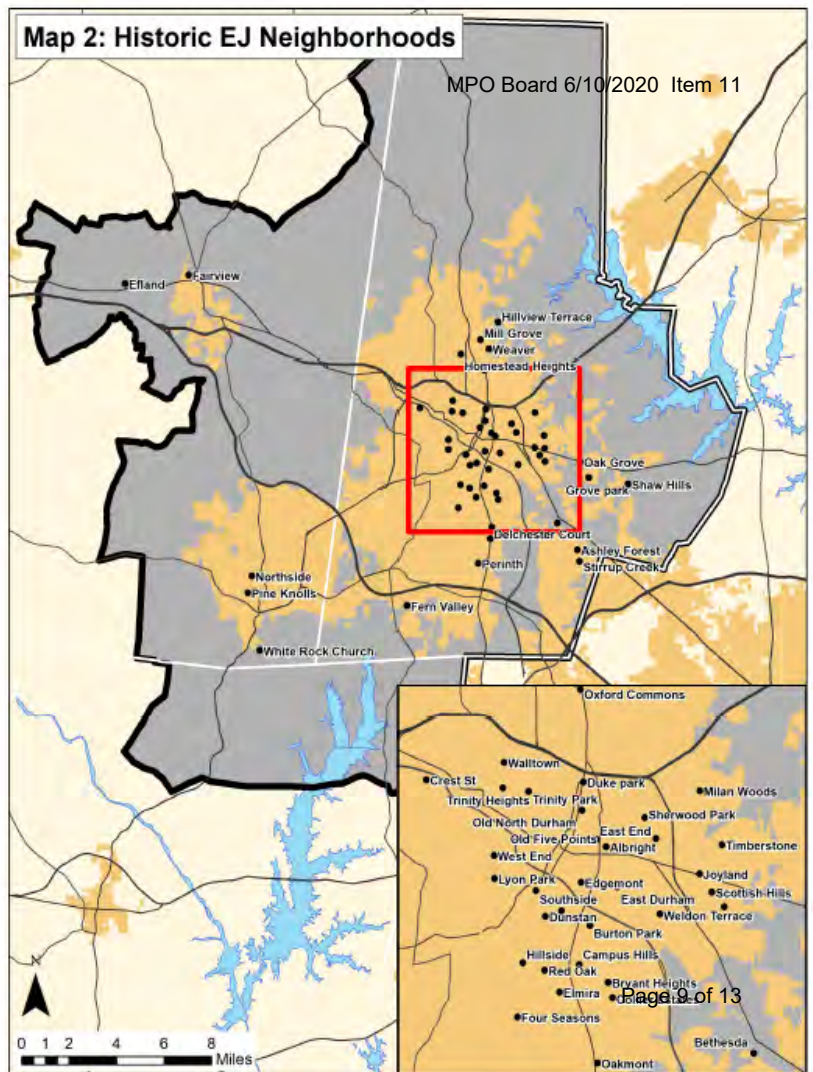


Map 3.9: Overlapping Communities of Concern in the DCHC MPO Area
Census Block Groups with one or more Communities of Concern. Page 8 of 13

Historic EJ Neighborhoods

Map 2: Historic EJ Neighborhoods

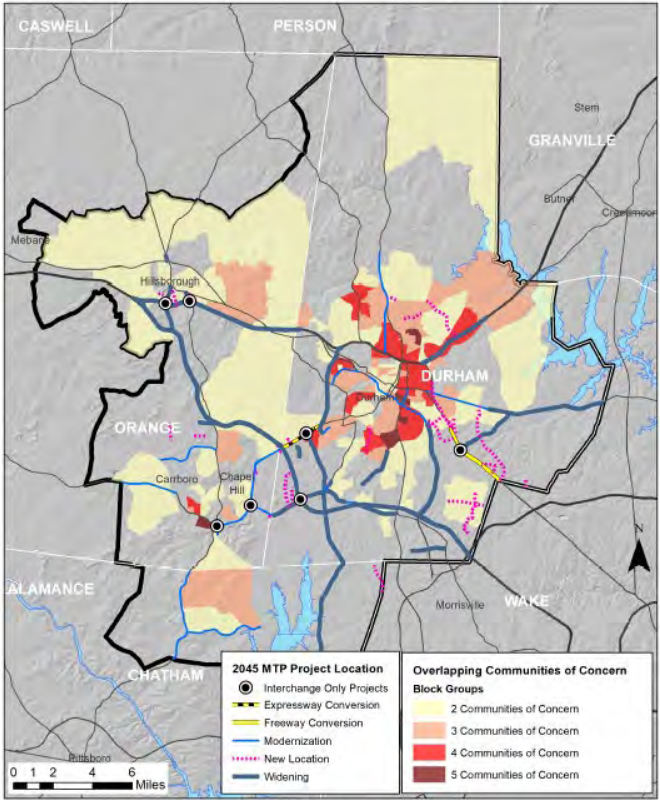
MPO Board 6/10/2020 Item 11



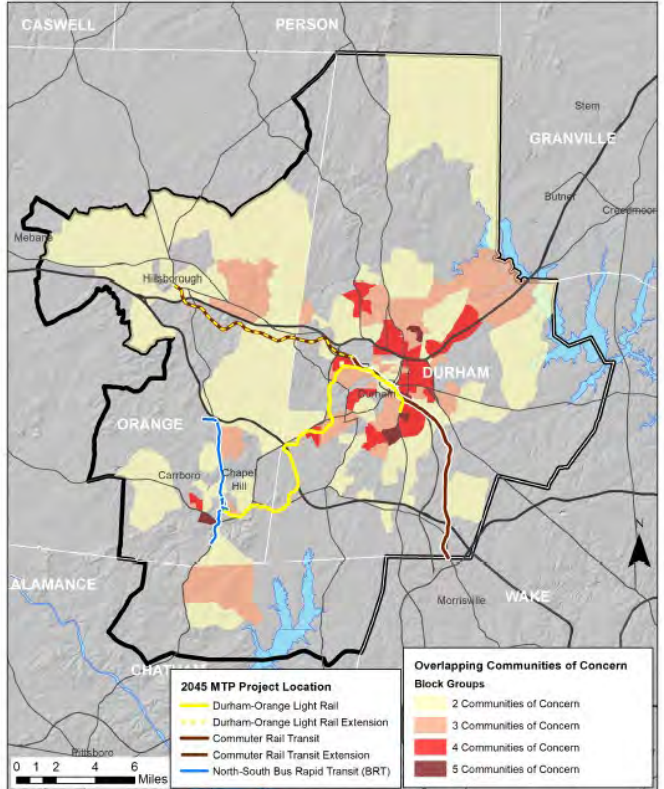
Analysis of DCHC's Major Planning Activities

Analysis of geographic distribution of projects and funding:

- 2045 Metropolitan Transportation Plan
- FY 2018-2027 Transportation Improvement Program
- FY 2019-2020 Unified Planning Work Program



Map 4.1: Location of MTP Highway Projects Relative to Overlapping Communities of Concern Block Groups



Map 4.2: Location of MTP Fixed Guideway Transit Projects Relative to Overlapping Communities of Concern Block Groups

Table 4.1: 2045 MTP Project Distribution

Type of MTP Project	Located within Overlapping CoC Block Groups	Total number of project segments or total Project Funding in DCHC MPO Area	Percent of Total (Threshold for measuring projects is 37%)
Interchange Projects	5	7	71%
Interchange Project Funding	\$158 million	\$299 million	53%
Highway Project Miles	118	211	56%
Highway Project Funding	\$1.28 billion	\$3.05 billion	42%
Transit Project Miles*	28	49	58%

*A methodology for geographic distribution of transit route project costs was not included as part of the 2045 MTP. Thus, the geographic distribution of funding for transit route service projects could not be compared to locations of EJ communities of concern as part of this EJ report.

All measures of interchange, highway and transit investments in communities of concern exceeded the 37% threshold.

Conclusions and Recommendations

- Although projects may be equitably distributed, communities may not necessarily experience benefits and burdens equitably
 - Suggests more detailed benefit/burden analysis for future versions
- EJ Report is a reference for local, regional, and state agencies and organization
- Adjust methodology as DCHC region grows, changes demographically, and as best practices evolve
- Adjust Public Involvement Policy to address future demographic changes
- Tailor outreach strategies to the values, traditions, and histories of communities and populations that exist in the DCHC area