



DURHAM • CHAPEL HILL • CARRBORO

DCHC

METROPOLITAN PLANNING ORGANIZATION

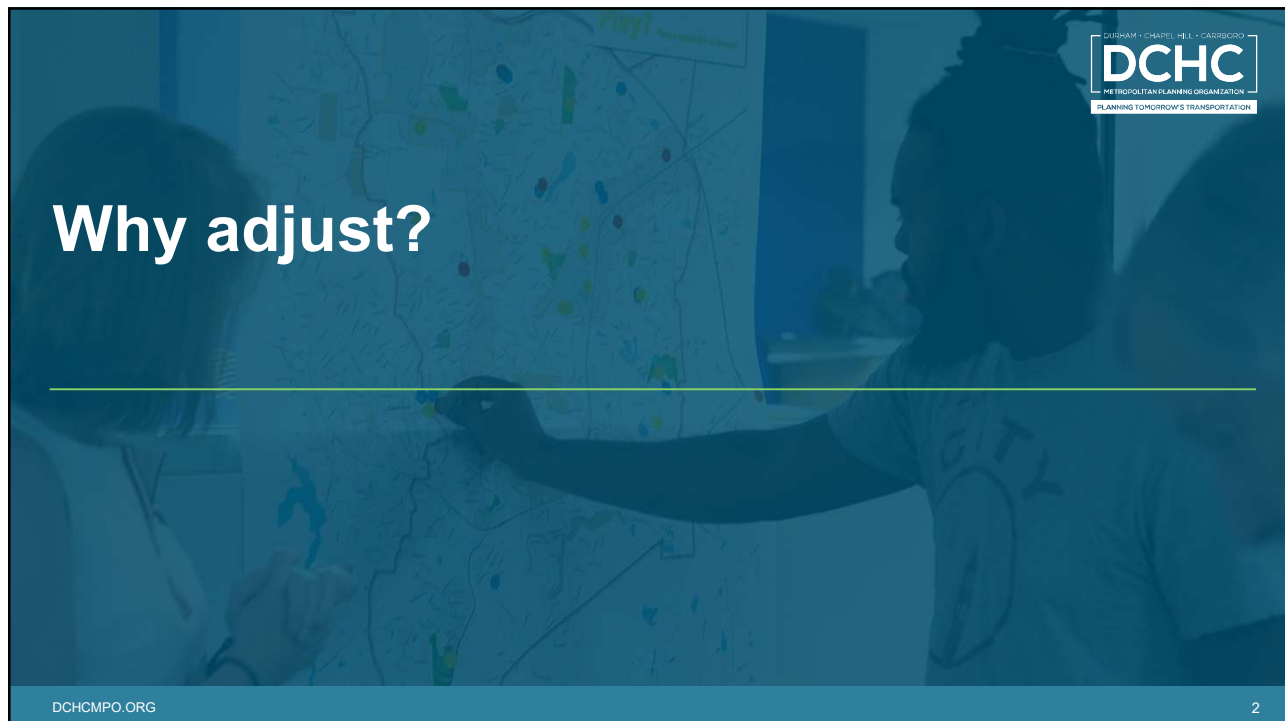
PLANNING TOMORROW'S TRANSPORTATION

Adjustment on Proposed 2024 MPA and AUA

Cameron Schuler, KC Chae, Doug Plachcinski, MPO Staff

The slide features a background image of a modern urban street with a pedestrian crossing, a bicycle lane, and a colorful geometric pattern on the pavement. The DCHC logo is prominently displayed in the upper left, and the title and speaker information are centered and bottom-aligned respectively.

1



Why adjust?

DURHAM • CHAPEL HILL • CARRBORO

DCHC

METROPOLITAN PLANNING ORGANIZATION

PLANNING TOMORROW'S TRANSPORTATION

DCHCMPO.ORG

2

The slide has a dark blue background with a faint image of people looking at a map. The text 'Why adjust?' is written in large white font on the left. The DCHC logo is in the top right corner, and the website URL 'DCHCMPO.ORG' and the number '2' are in the bottom left and bottom right corners respectively.

2

Proposed 2024 MPA and AUA



WHY ADJUST?

- Addresses technical adjustments
 - In response to comments from NCDOT
 - › Roadway on and off,
 - › UA in the AUA,
 - › AUA in MPAs
 - Correct issues related to the coordinate system used in the previous Boundary

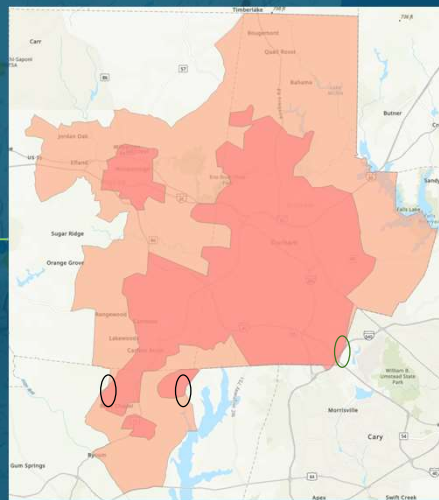
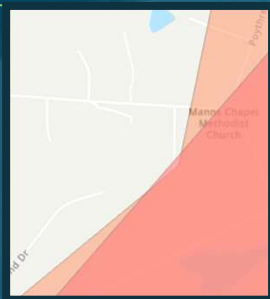
- A detailed review at a micro level (1:1,000 scale) resolved these issues

3

Proposed 2024 AUA Boundary



- Three areas to be adjusted.
- The AUA in some places does not exist within an MPA.
- The coordinate system was also corrected.

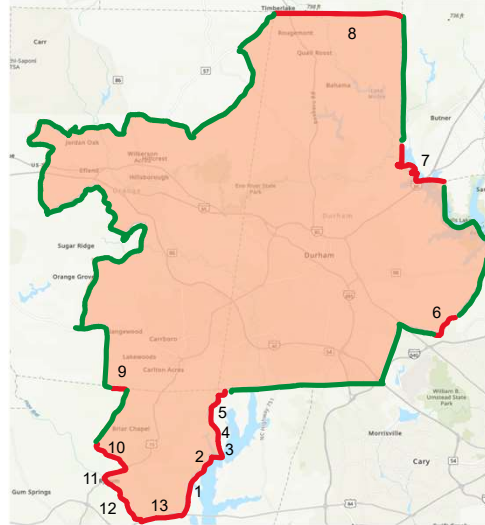


4

MPA Boundary Adjustments

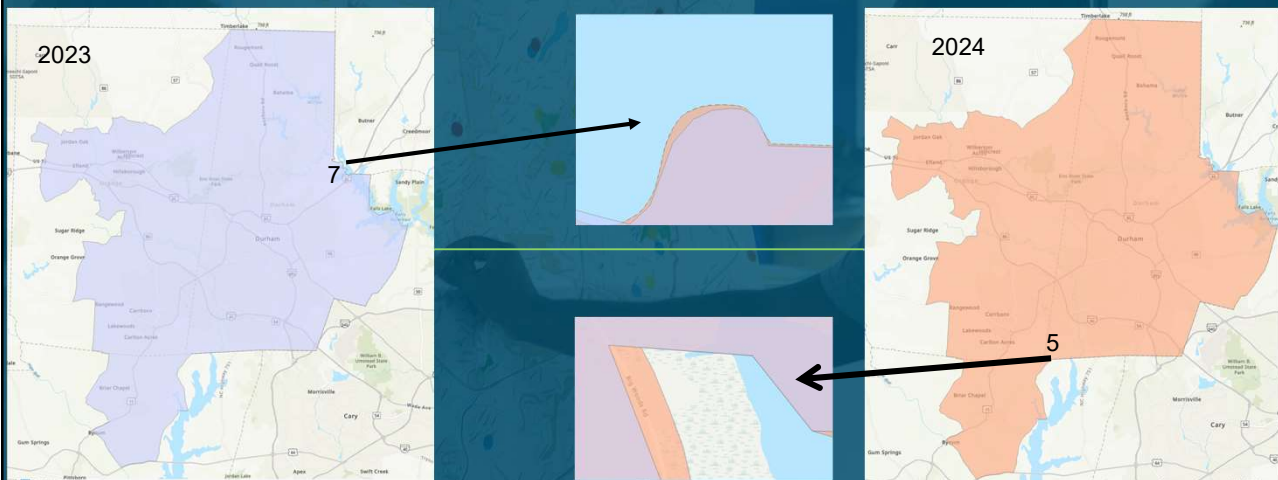


Location	Number	Change
Big Woods Road	1	Include Right of Way,
Big Woods Road	2	Correct Gaps
Farrington Road	3	Include Right of Way
Farrington Point Road	4	Include Right of Way
Old Farrington Road	5	Include Right of Way
Stewartby Dr	6	Correct Gaps, CAMPO and DCHC Overlap
Water area near Highway 85	7	Correct Gaps, CAMPO and DCHC Overlap
North Boundary	8	Correct Gaps
Woodgate Dr	9	Correct Gaps
Hamlets Chapel Road	10	Include Right of Way
Us 15	11	Include Right of Way
Haw River	12	Include Right of Way
US 64	13	Include Right of Way
Western/Northwestern Boundary	14-29	No changes made, our boundary goes in and out of the road line.



5

2023 MPA and 2024 MPA Side by Side (Examples)



6