

DURHAM • CHAPEL HILL • CARRBORO

**DCHC**

METROPOLITAN PLANNING ORGANIZATION

PLANNING TOMORROW'S TRANSPORTATION

# **Congestion Management Process (CMP) – Bicycle Level of Traffic Stress (LTS)**

Yanping Zhang

April.2<sup>nd</sup>, 2024

# Bicycle Level of Traffic Stress (LTS)

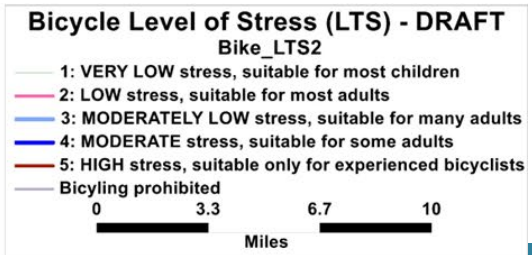
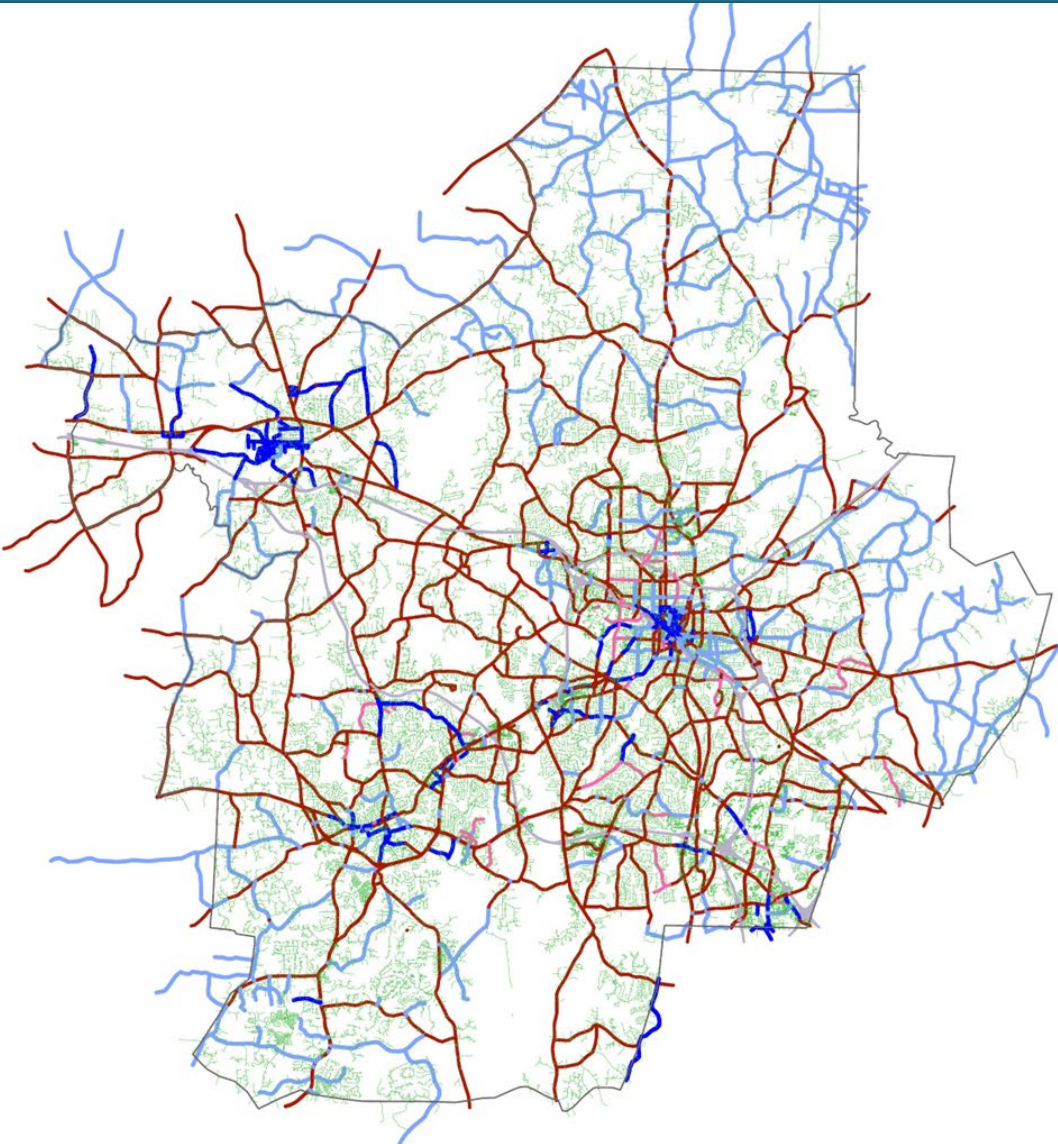
- Originally developed by the Meneta Transportation Institute in 2012
- Identifying streets that are low-stress for bicyclists
- Bike LTS framework is based on a hierarchy of roadway characteristics, including:
  - 1) traffic speed and volume,
  - 2) presence and type of bicycle facility,
  - 3) roadway cross- section, and
  - 4) land use context

# Bicycle Level of Traffic Stress (LTS) – Methodology

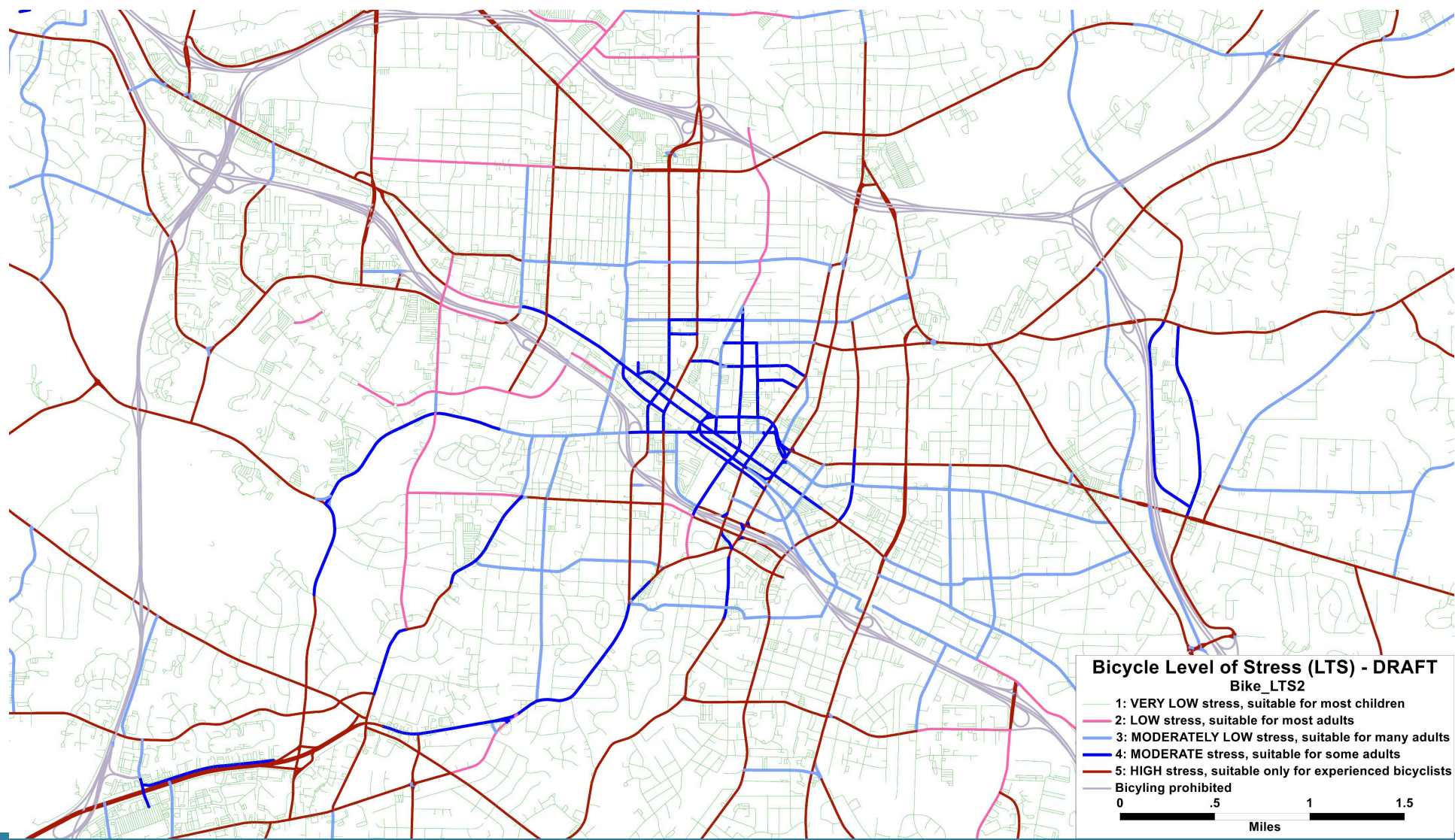
- FDOT's Bike LTS method suited for planning applications
- Professional judgment where data were not available, such as
  - 1) Width of the bicycle lane,
  - 2) on-street parking, separation from the travel lanes,
- Preliminary results and requires review by planners from local jurisdictions
- Quality of the roadway network is assessed on a 5- point scale:
  - ❖ 1 - Very Low Stress; reflecting that the facility is more inviting to more types of bicyclists including most children
  - ❖ 2 - Low Stress; reflecting that the facility is suited for most adults as it has marked bicycle lane
  - ❖ 3 - Moderately Low Stress; reflecting that the facility is suited for many adults
  - ❖ 4 - Moderate Stress; reflecting that the facility is suited for some adults
  - ❖ 5 - High Stress; reflecting that the facility is suited only for experienced bicyclists
  - ❖ 99 - Bicycle Access Prohibited



# Preliminary LTS Results – MPO area

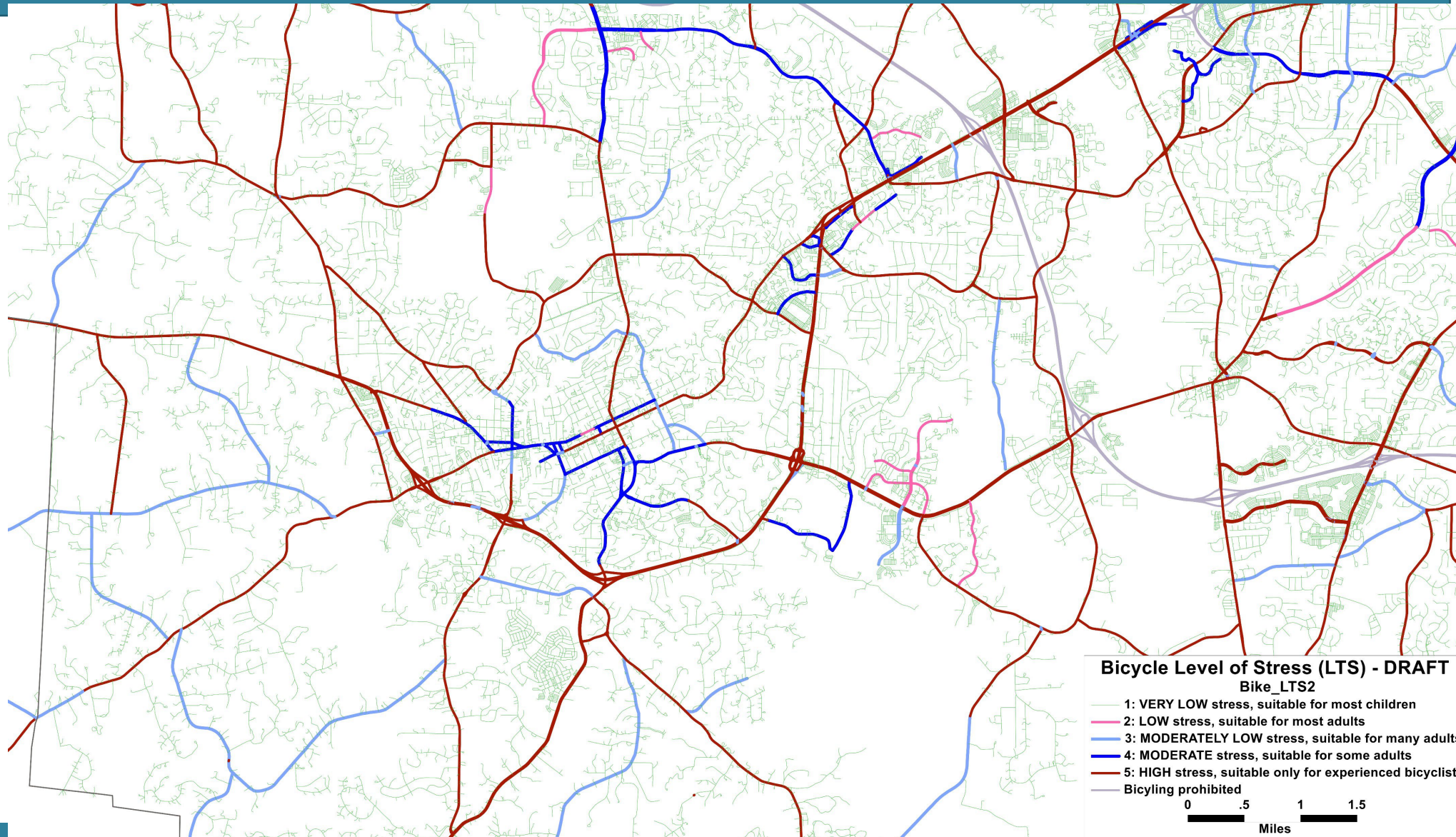


# Preliminary LTS Results – Downtown Durham



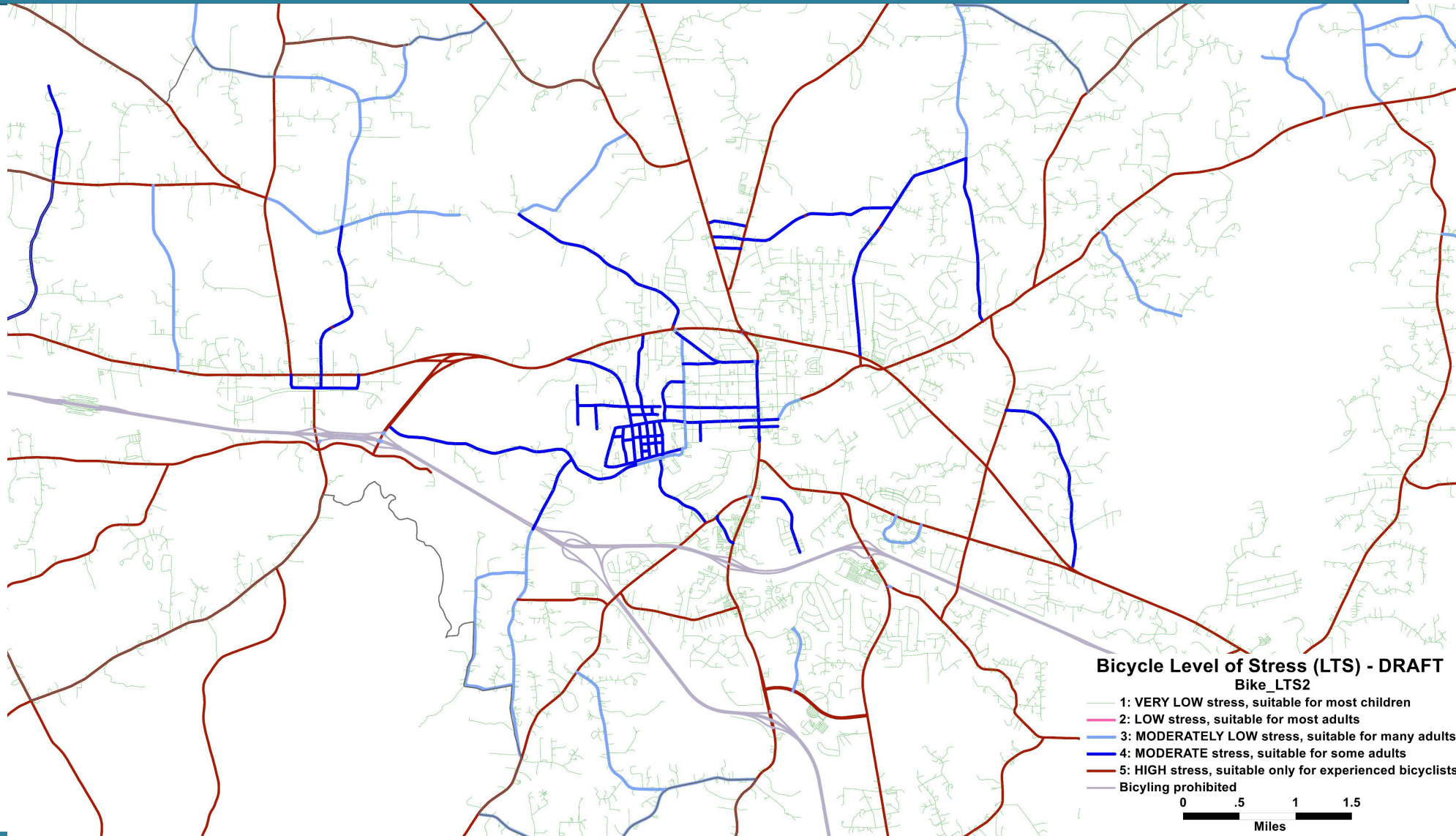


# Preliminary LTS Results – Chapel Hill & Carrboro

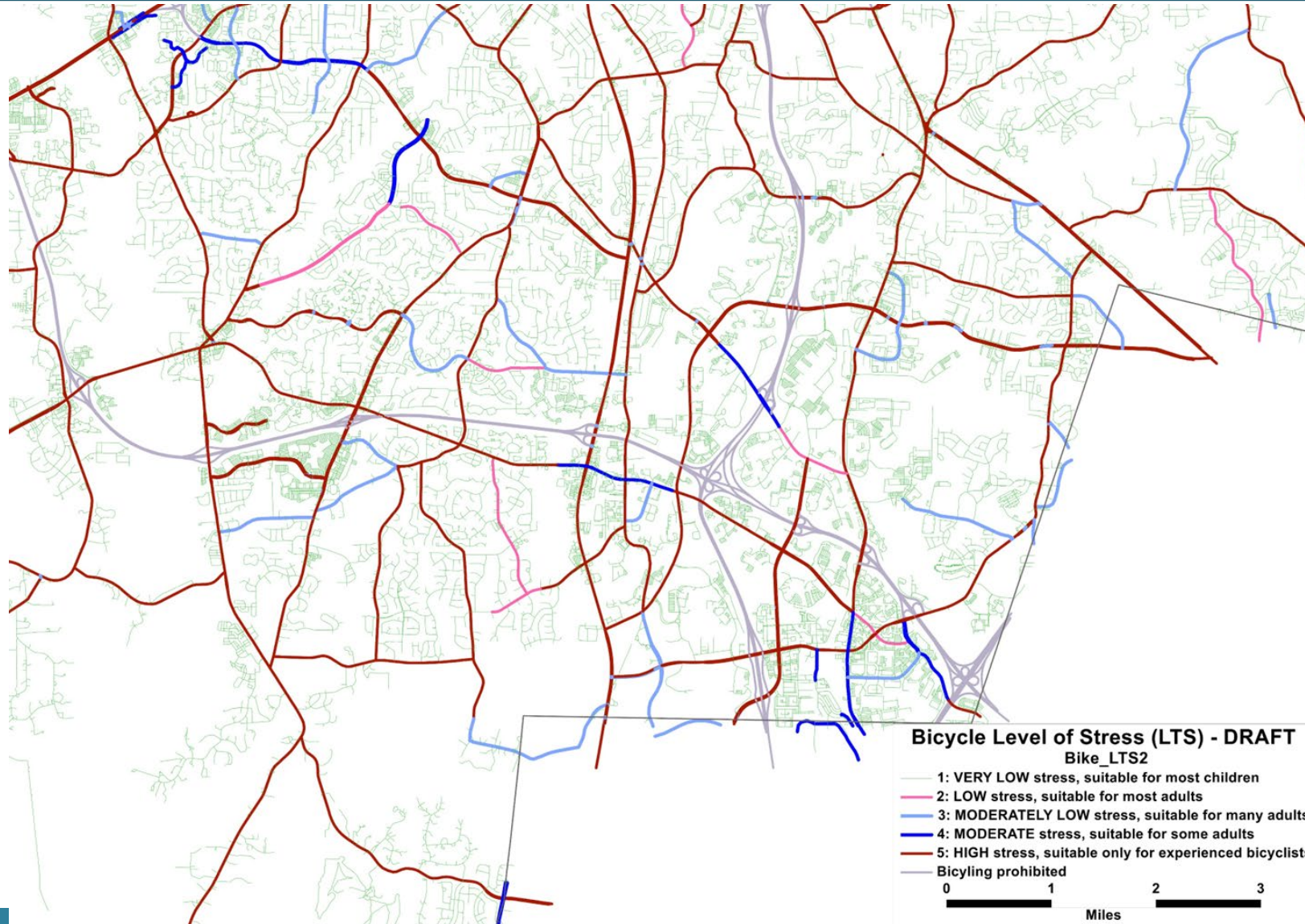




# Preliminary LTS Results – Hillsborough



# Preliminary LTS Results – South Point & RTP





Questions & Comments?  
[Yanping.zhang@dchcmpo.org](mailto:Yanping.zhang@dchcmpo.org)