

County Thresholds

This appendix includes demographic summary data for Chatham, Durham, and Orange counties; thresholds for each county that were developed using the methodology in this report; and mapped communities of concern for each county. These thresholds and mapped communities of concern by county will allow counties to use this report's methodology for county-specific projects, such as Transit Plans.

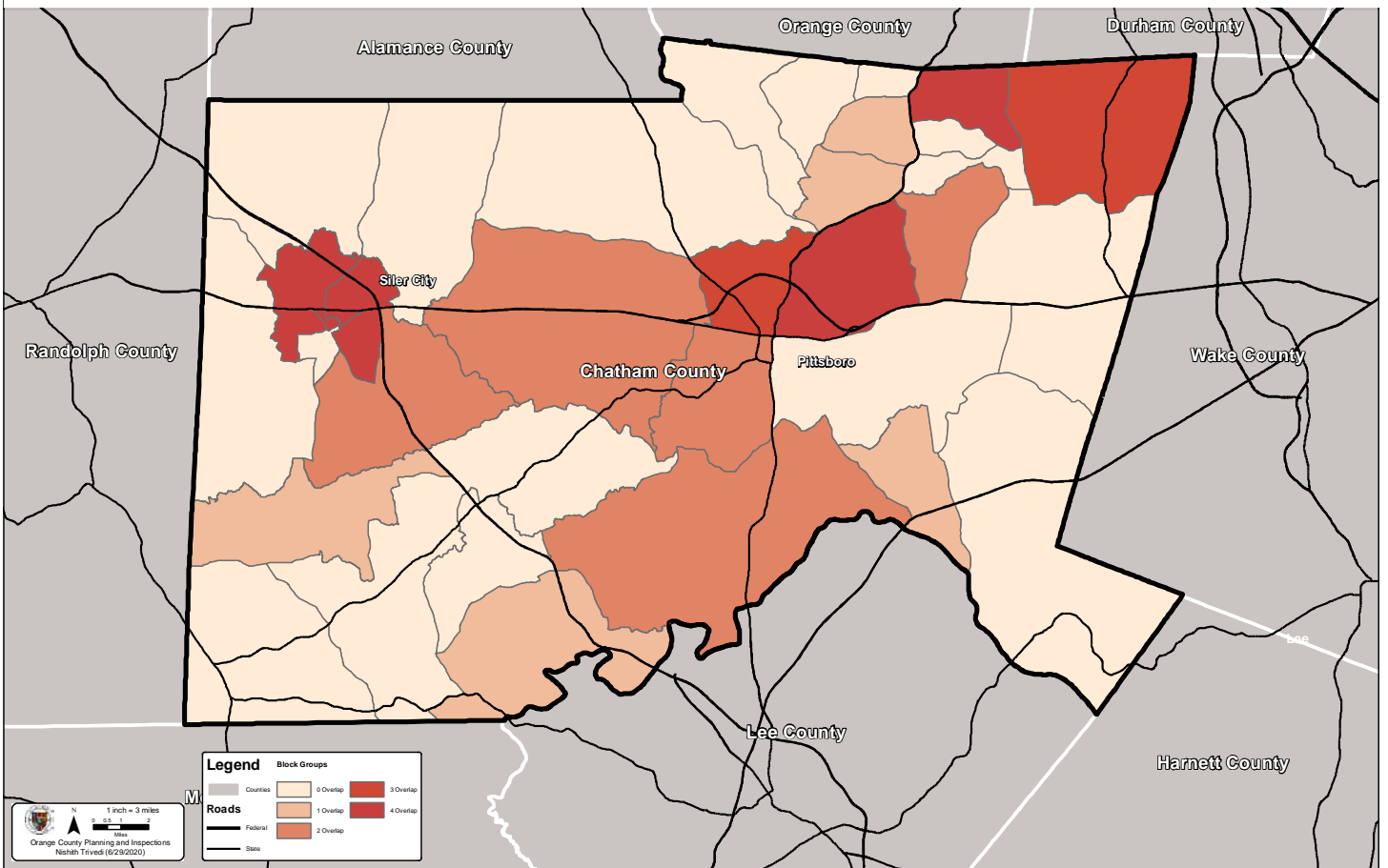
Table A.1: County Summary Data

County	Total Pop	Total HH	Med HH Income	Black	Minority	Hispanic/Latino	Below Poverty	Elderly	Zero Car Households	LEP
Chatham	69,791	31,555	\$ 63,531	8,073	13,601	8,626	8,241	16,306	1,283	2,105
Durham	306,457	133,429	\$ 58,190	113,511	149,091	41,189	46,805	37,056	9,936	15,650
Orange	142,938	57,502	\$ 68,211	16,557	36,403	12,014	17,633	18,364	2,644	3,508

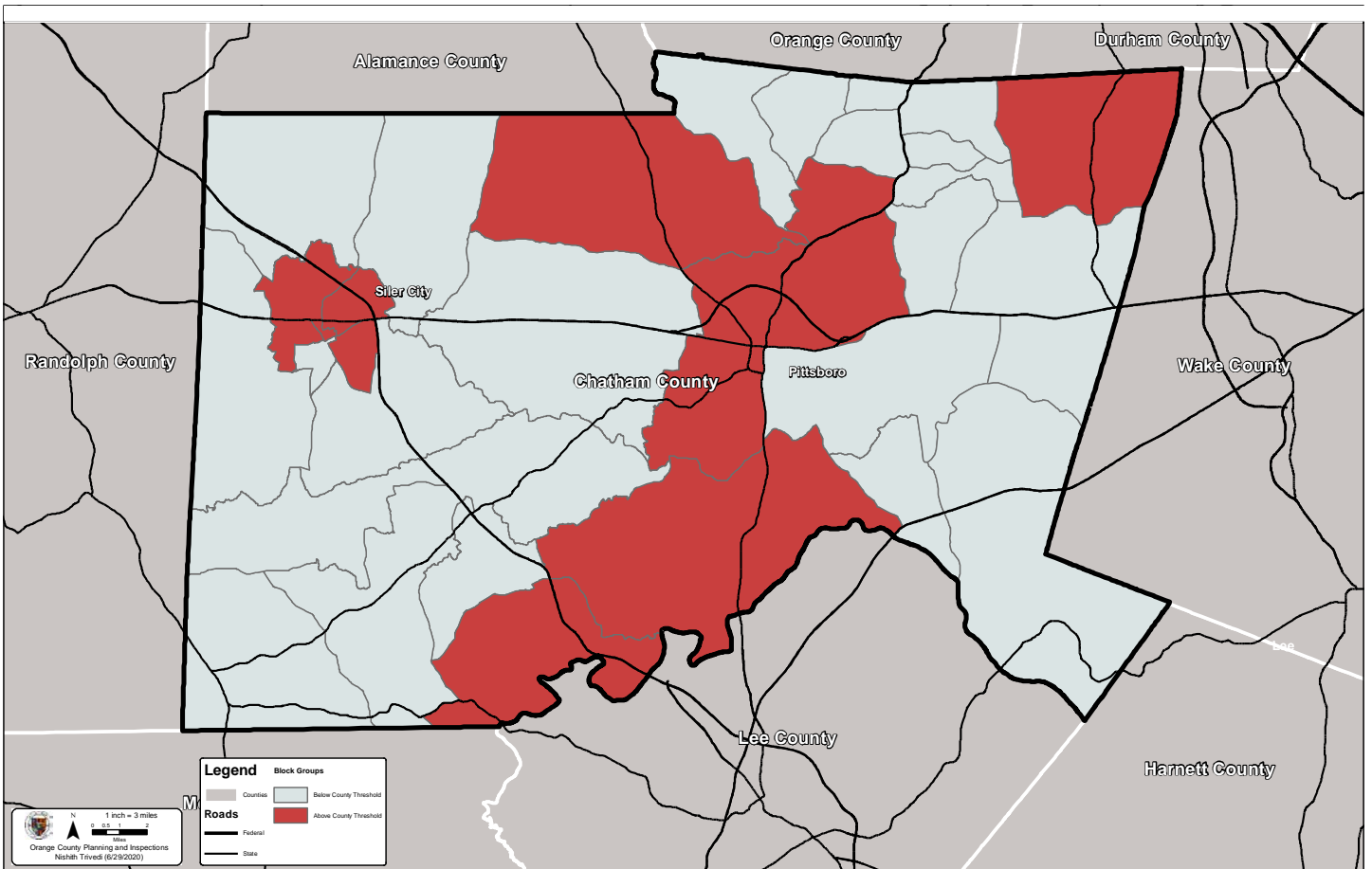
Table A.2: County Thresholds

County	Black	Minority	Hispanic/Latino	Below Poverty	Elderly	Zero Car Households	LEP
Chatham	12%	19%	12%	12%	23%	4%	3%
Durham	37%	49%	13%	15%	12%	7%	5%
Orange	12%	25%	8%	12%	13%	5%	2%

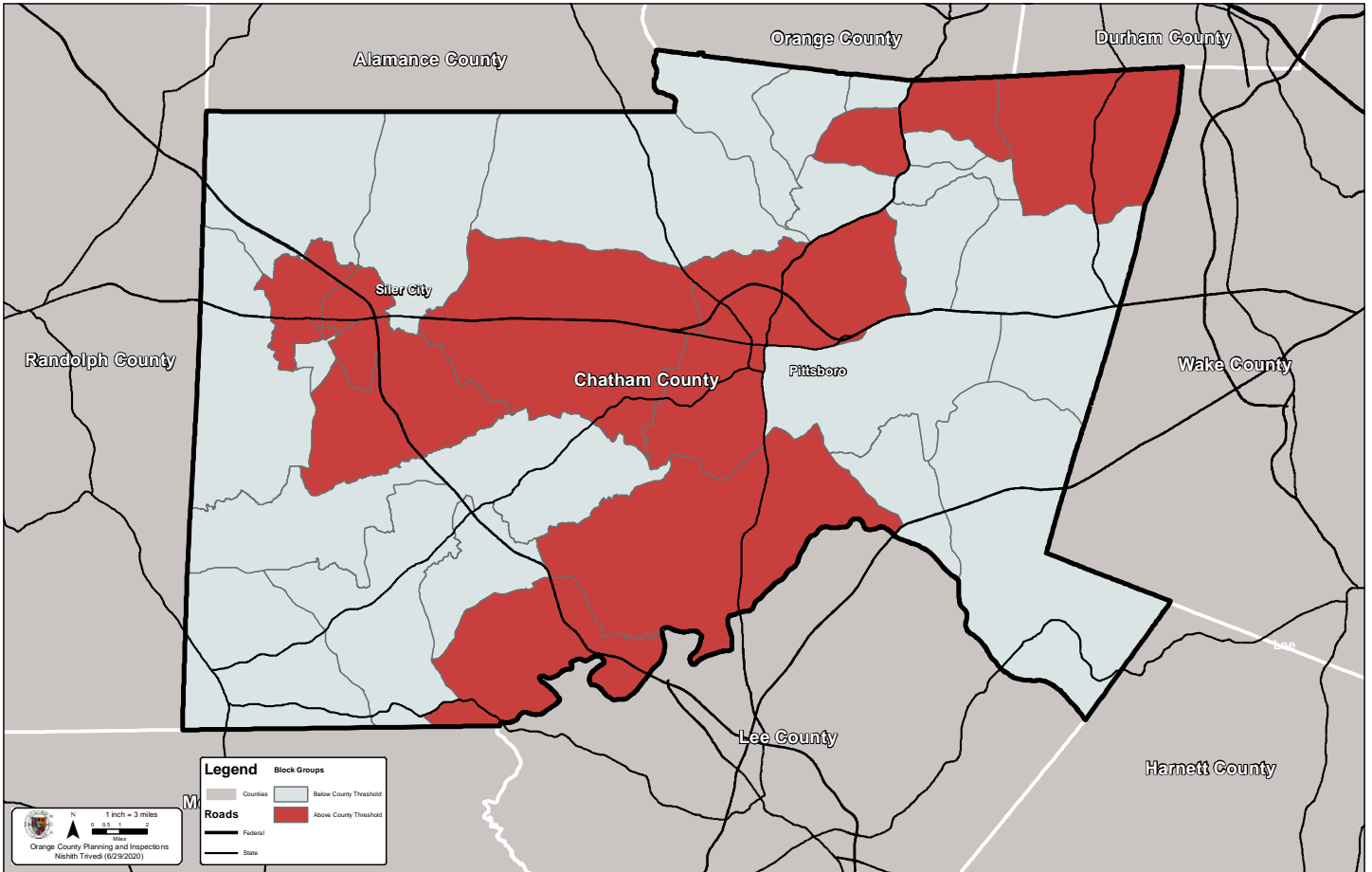
Environmental Justice - County Level Analysis - Communities of Concern



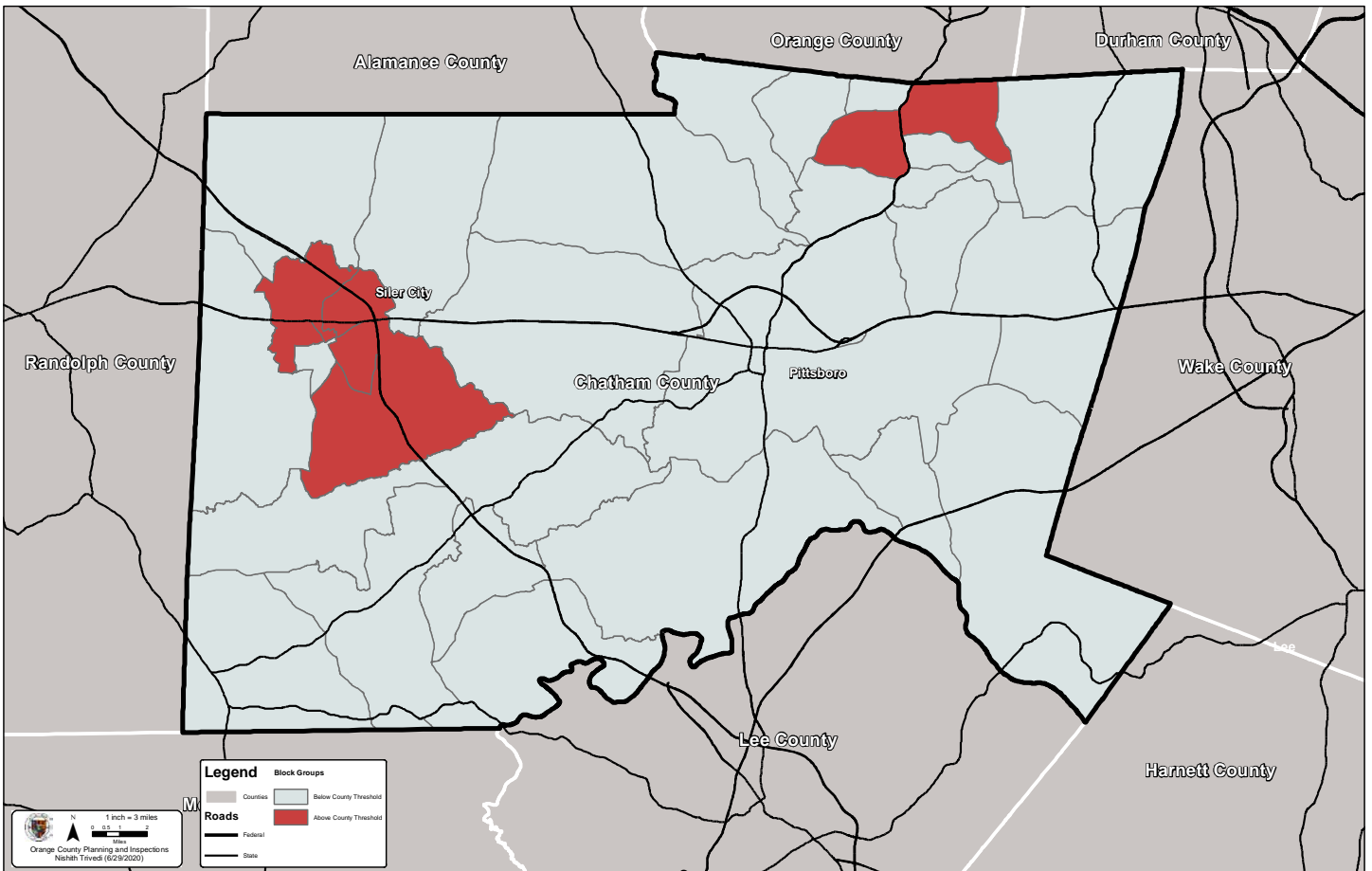
Environmental Justice - County Level Analysis - Black



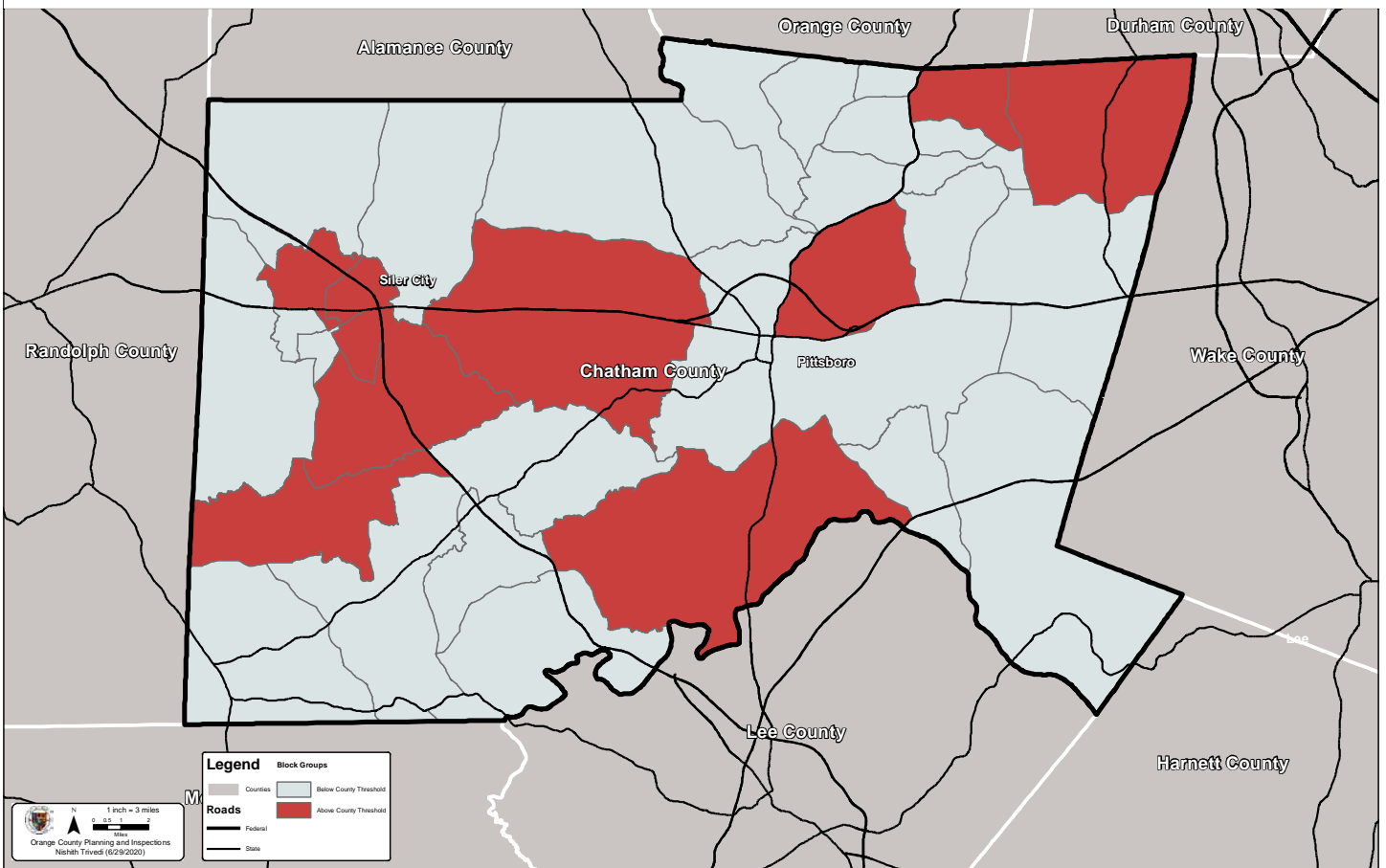
Environmental Justice - County Level Analysis - Minority



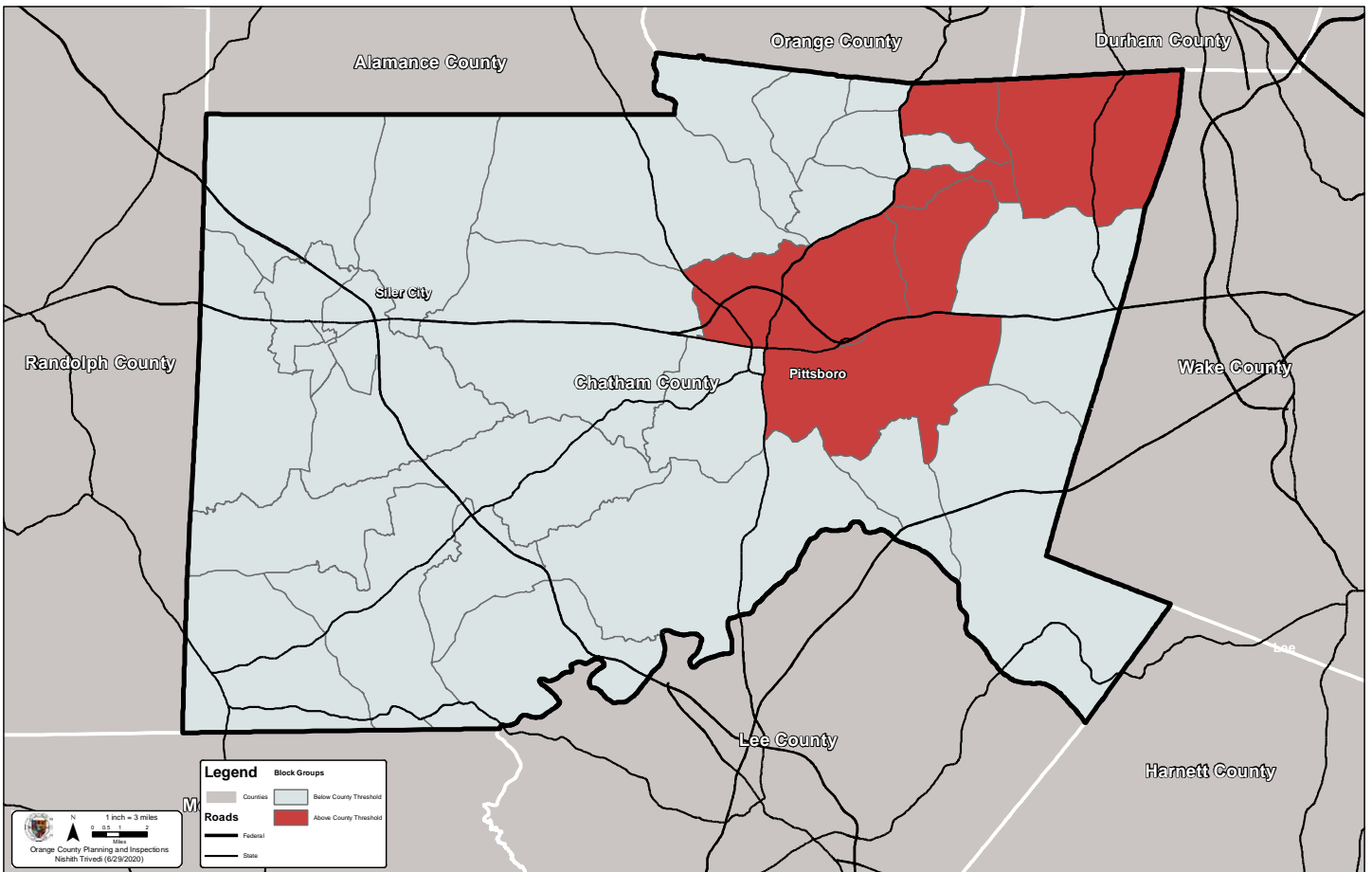
Environmental Justice - County Level Analysis - Hispanic/Latino



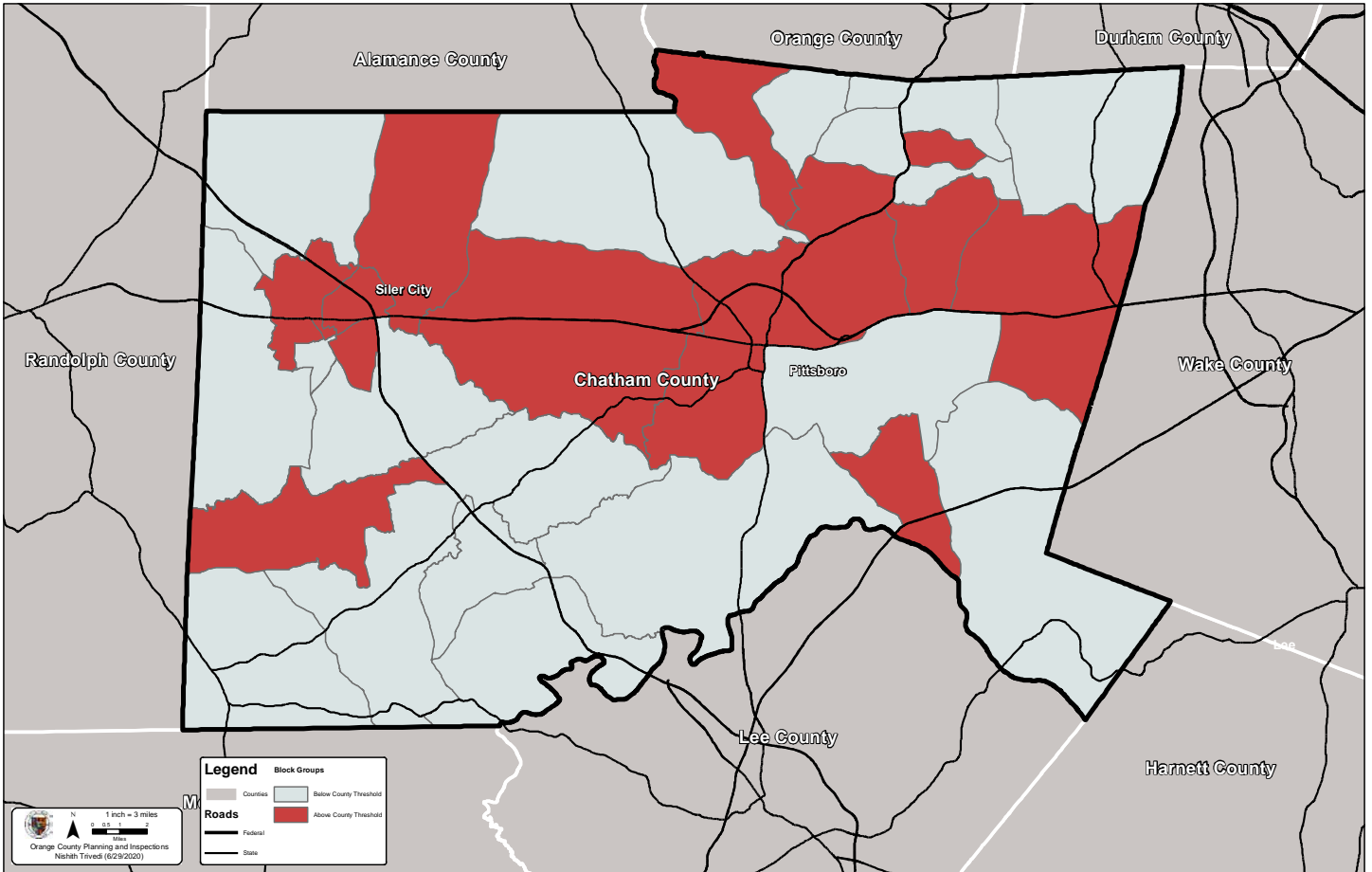
Environmental Justice - County Level Analysis - Below Poverty



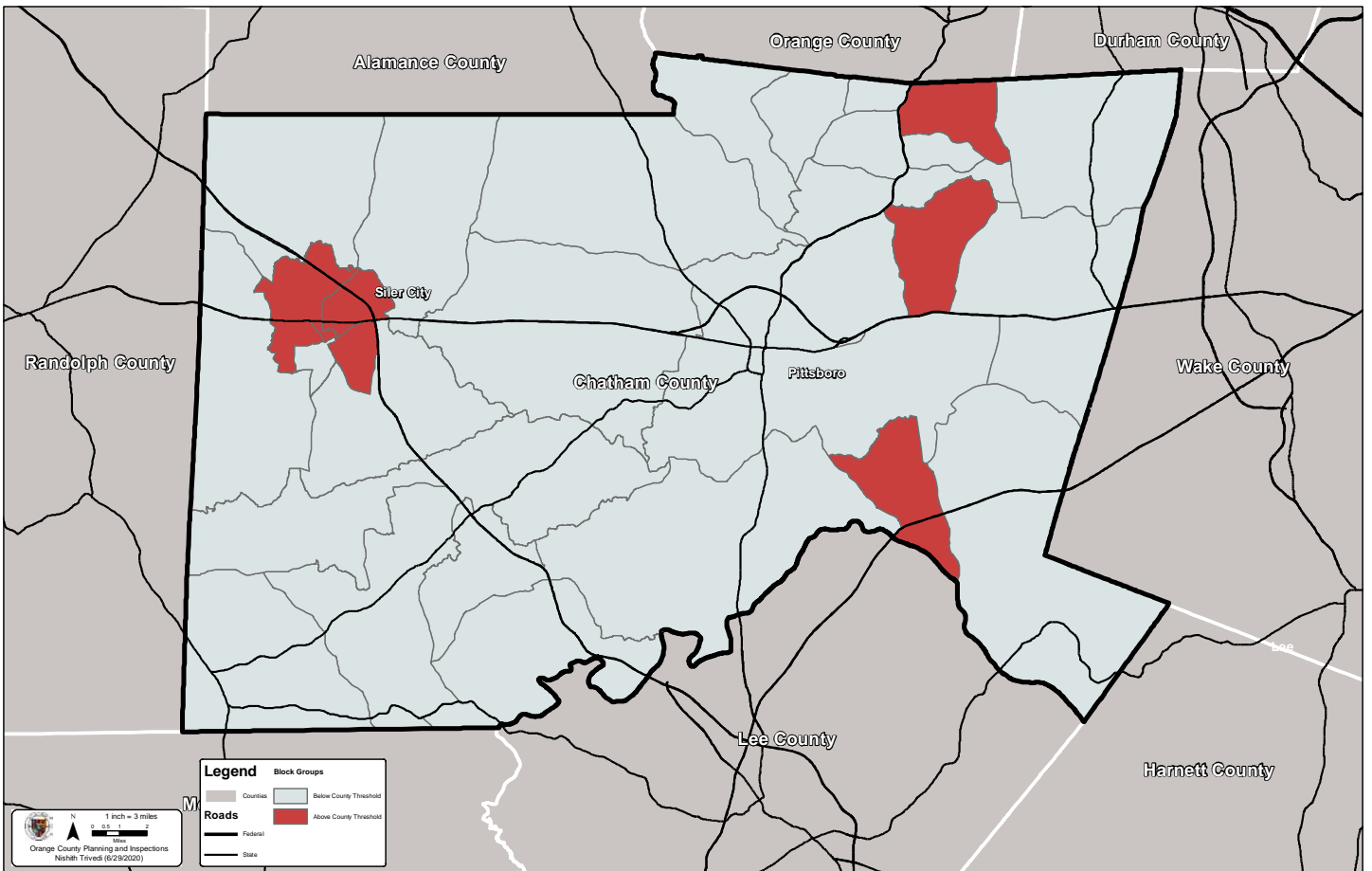
Environmental Justice - County Level Analysis - Elderly



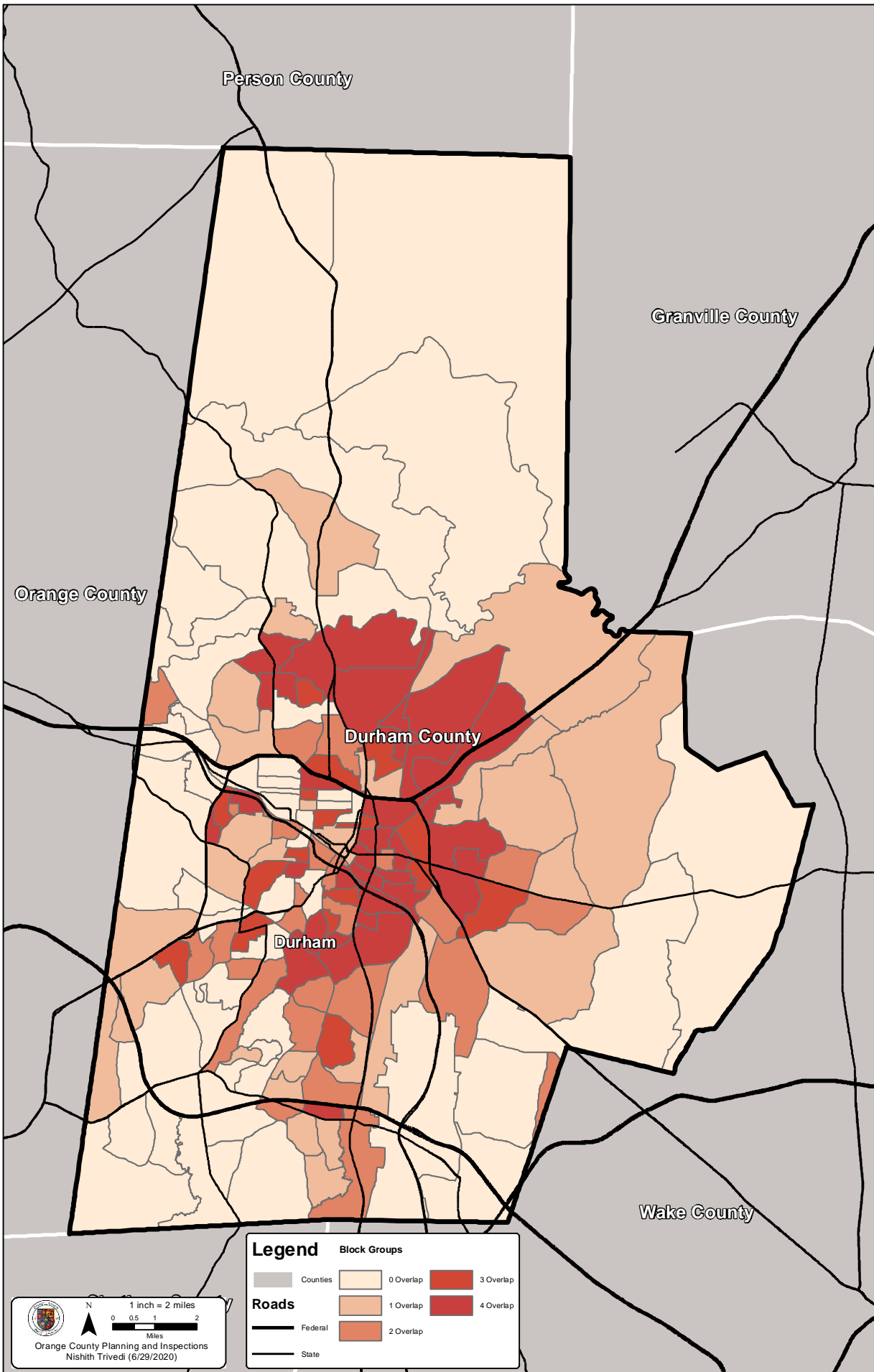
Environmental Justice - County Level Analysis - Zero Car Household



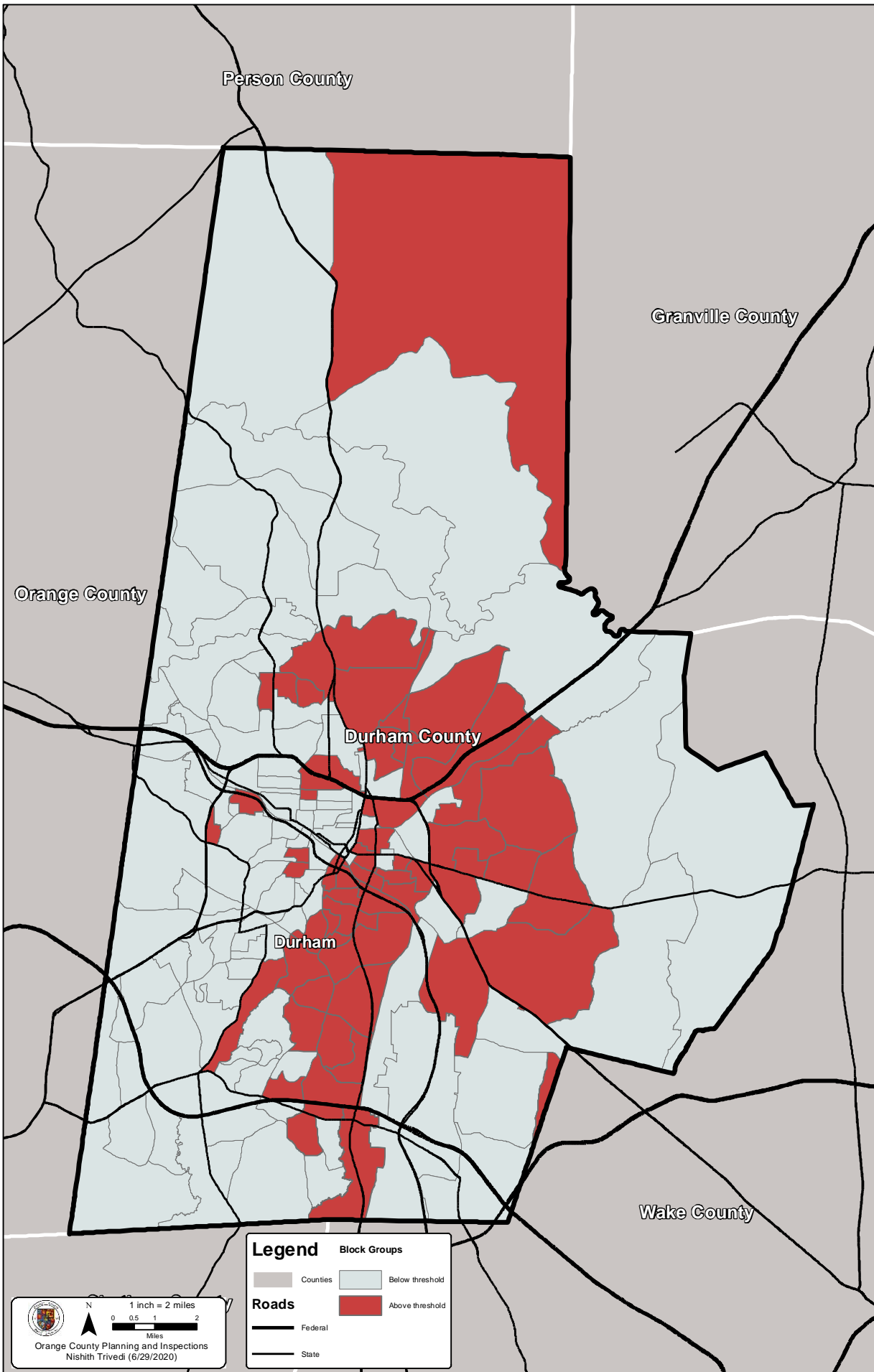
Environmental Justice - County Level Analysis - Limited English Proficiency (LEP)



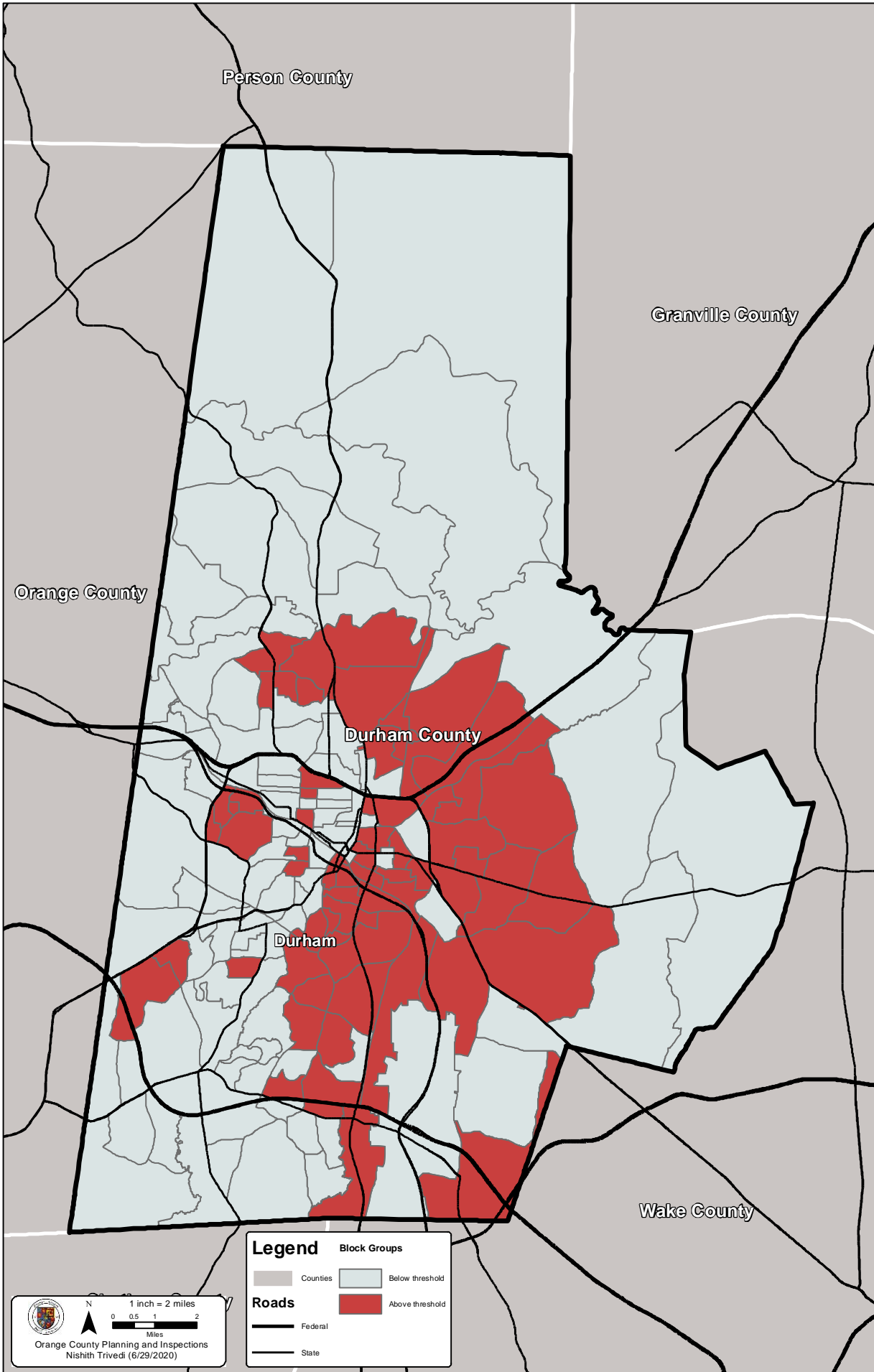
Environmental Justice - County Level Analysis - Communities of Concern



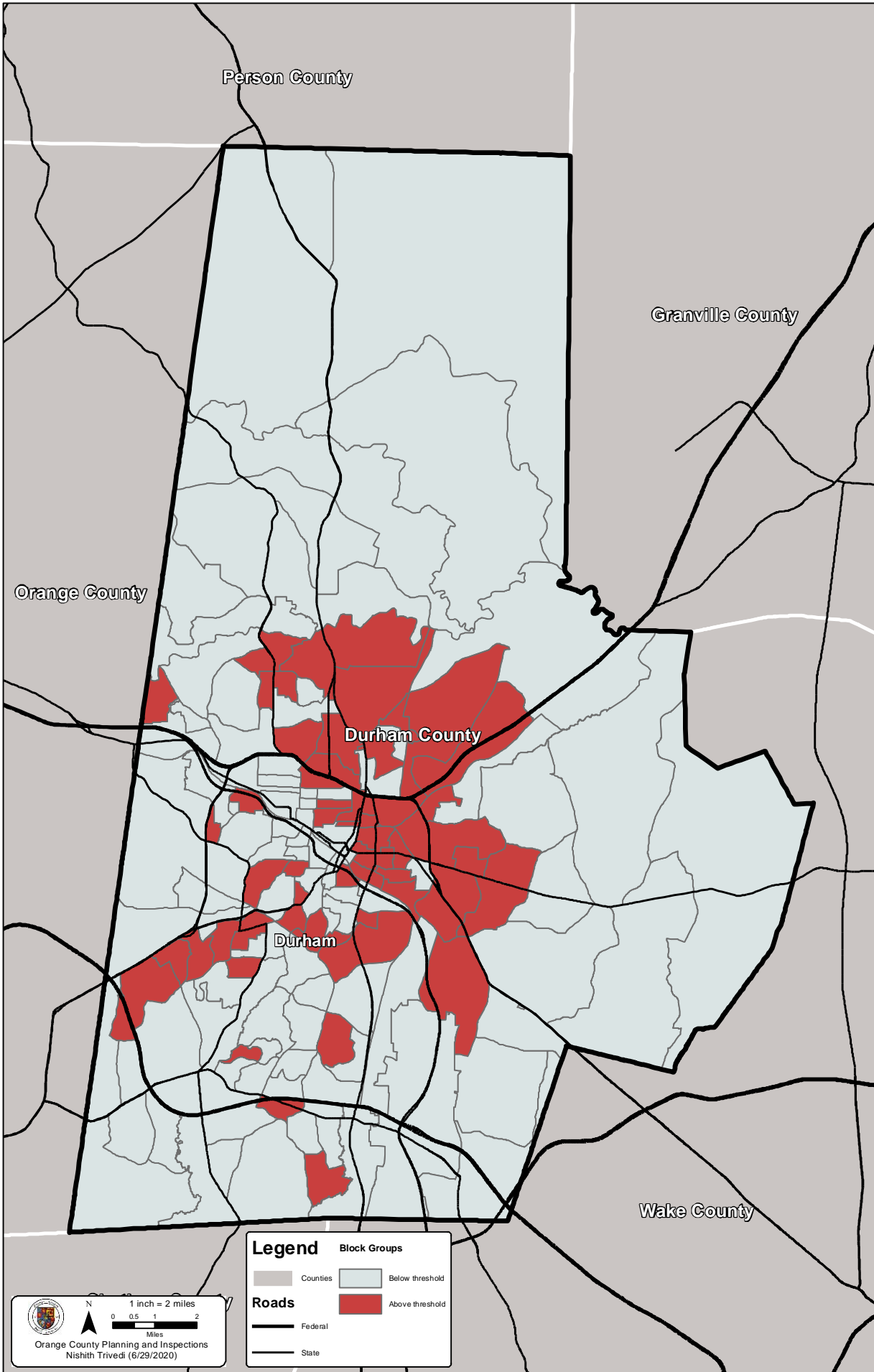
Environmental Justice - County Level Analysis - Black



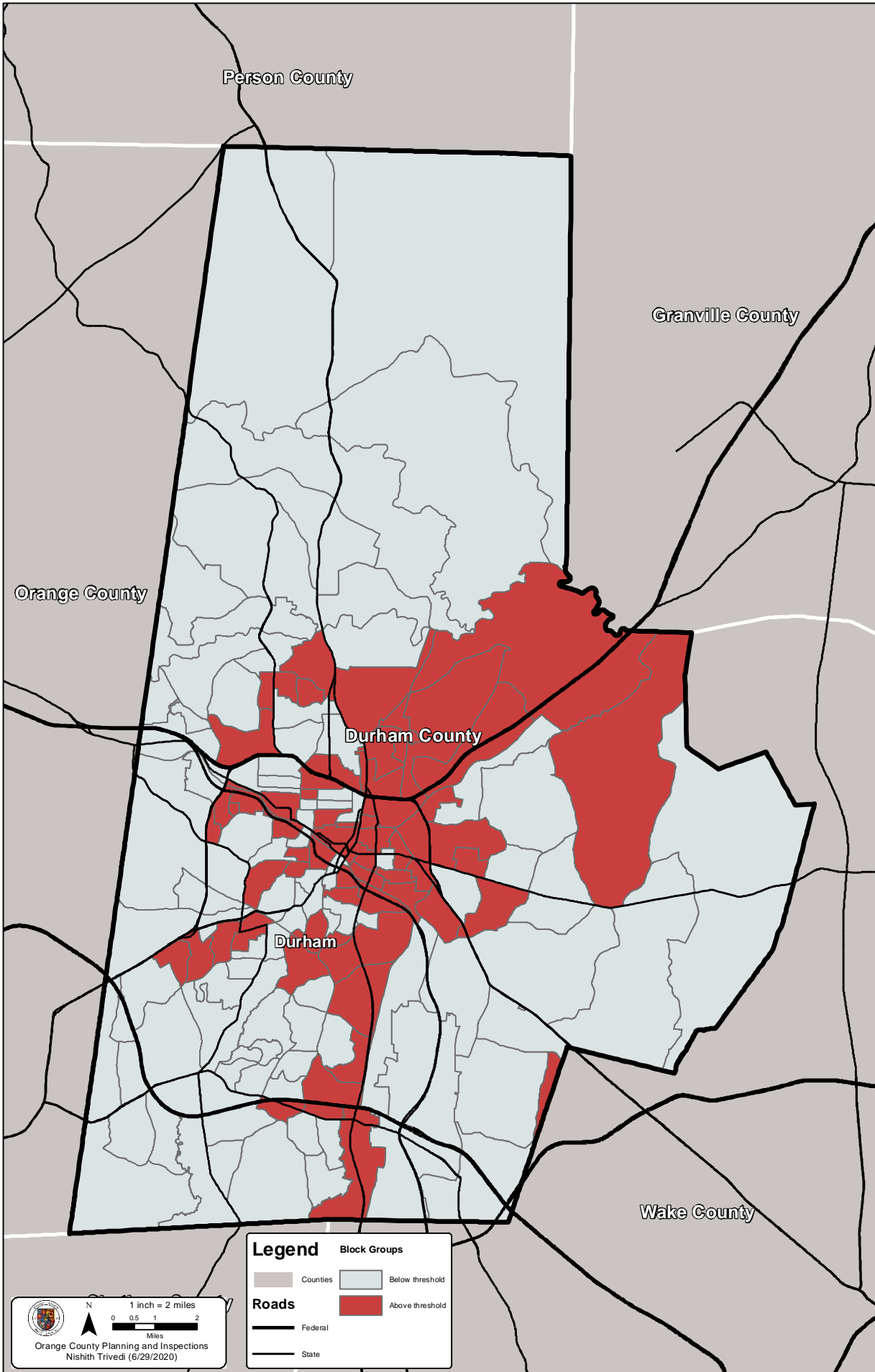
Environmental Justice - County Level Analysis - Minority



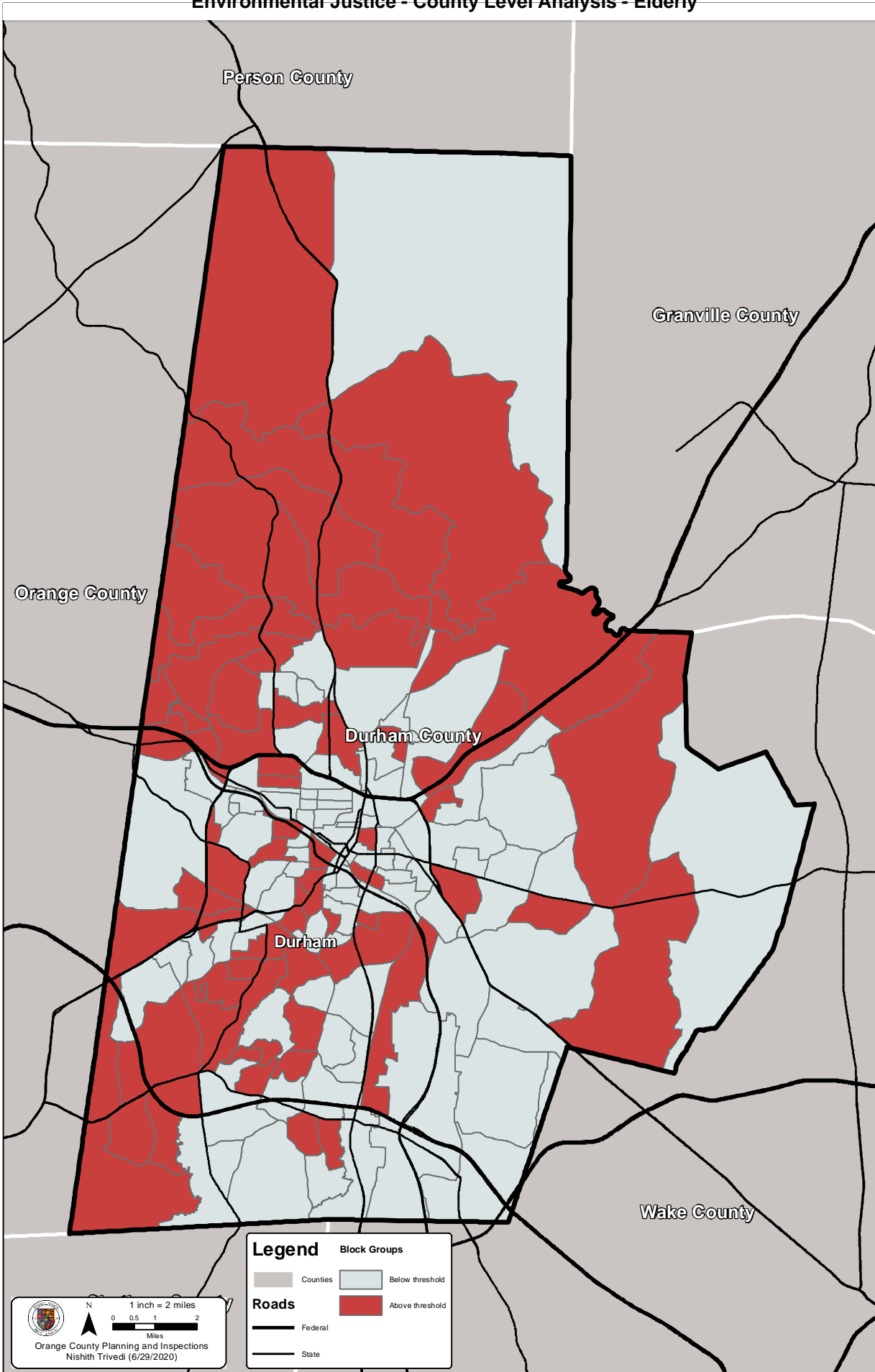
Environmental Justice - County Level Analysis - Hispanic/Latino



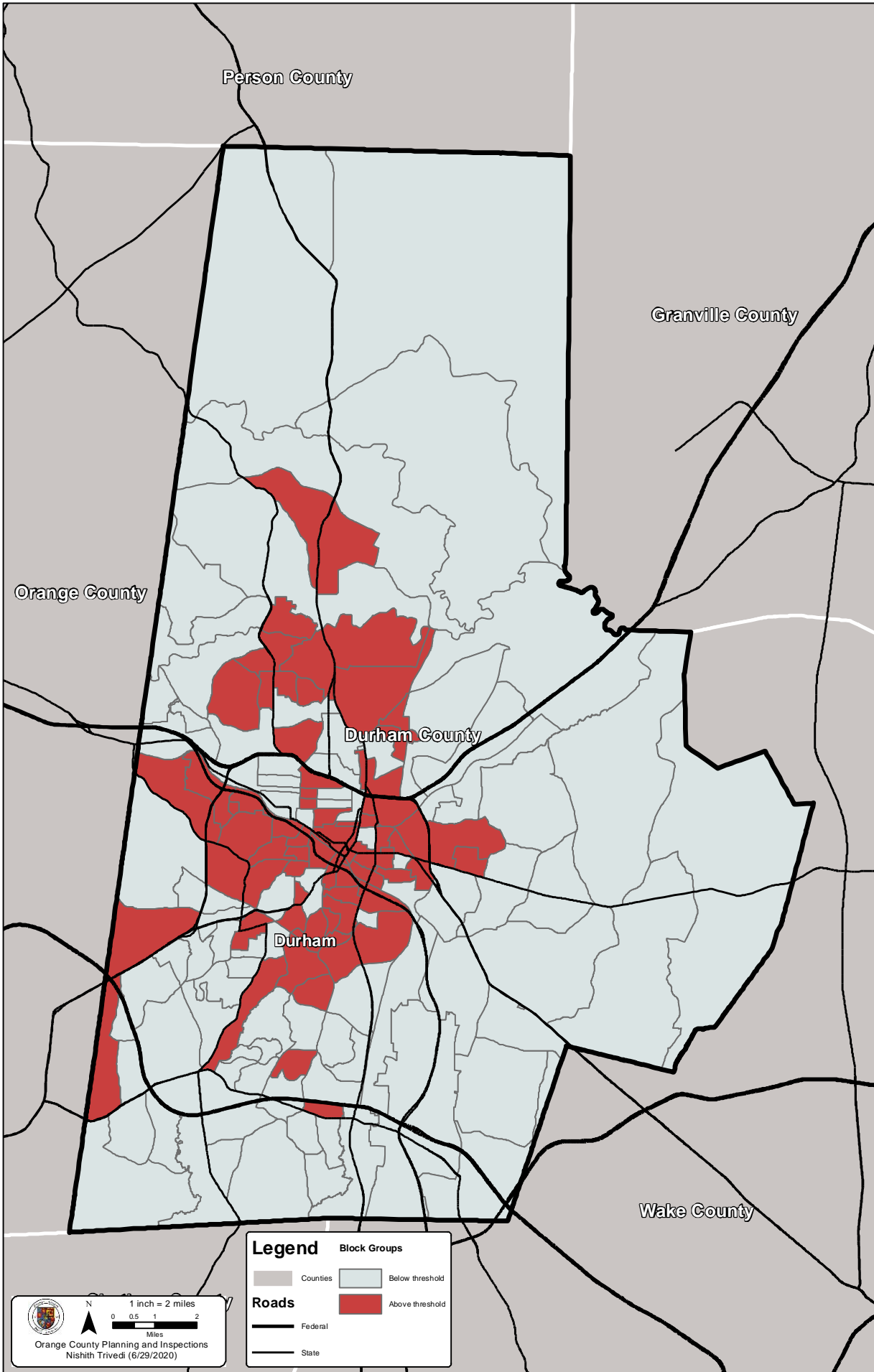
Environmental Justice - County Level Analysis - Below Poverty



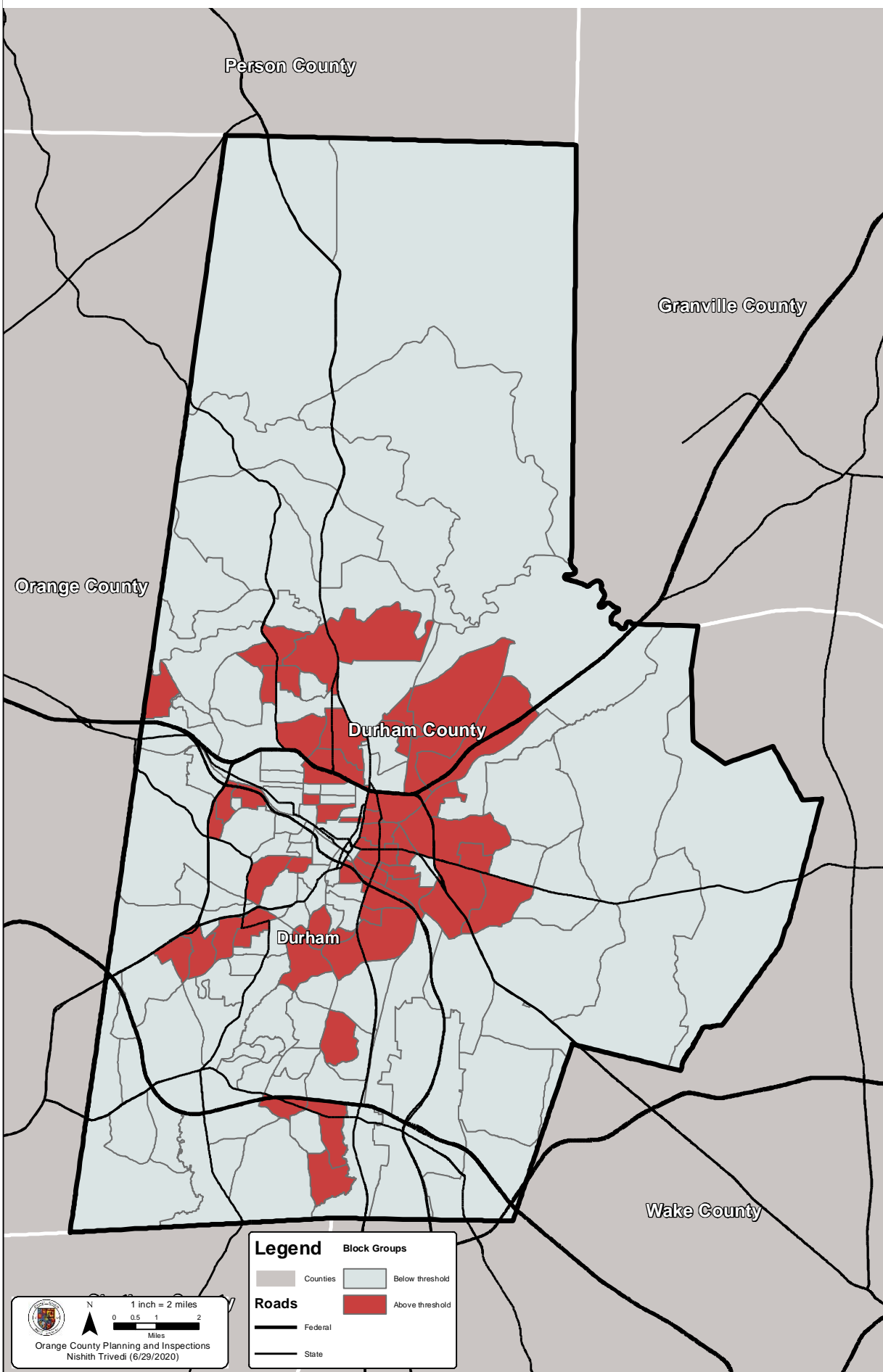
Environmental Justice - County Level Analysis - Elderly



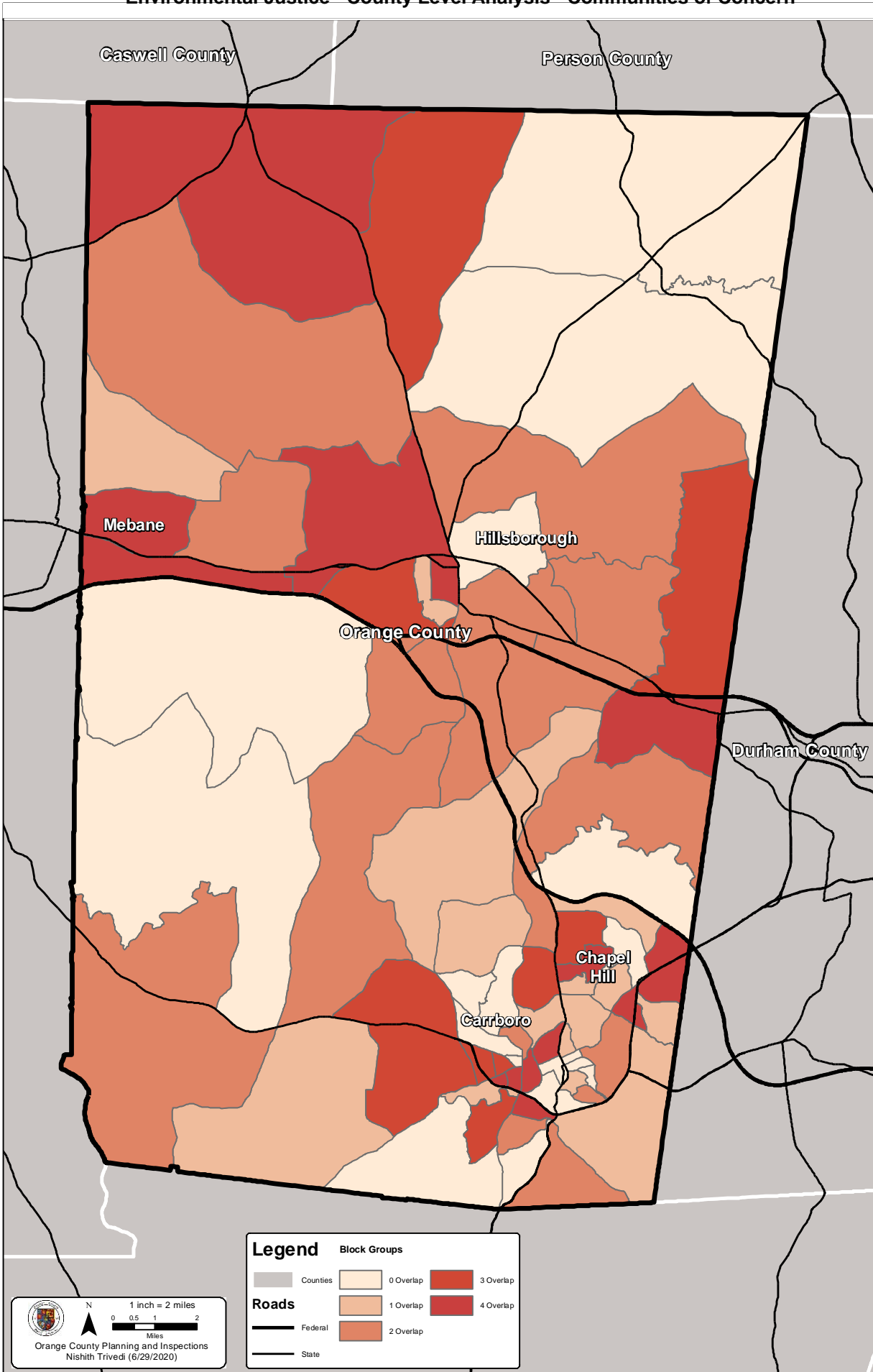
Environmental Justice - County Level Analysis - Zero Car Household




Environmental Justice - County Level Analysis - Limited English Proficiency (LEP)


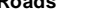





Environmental Justice - County Level Analysis - Communities of Concern


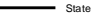


 N
1 inch = 2 miles
0 0.5 1 2
Miles
Orange County Planning and Inspections
Nishith Trivedi (6/29/2020)

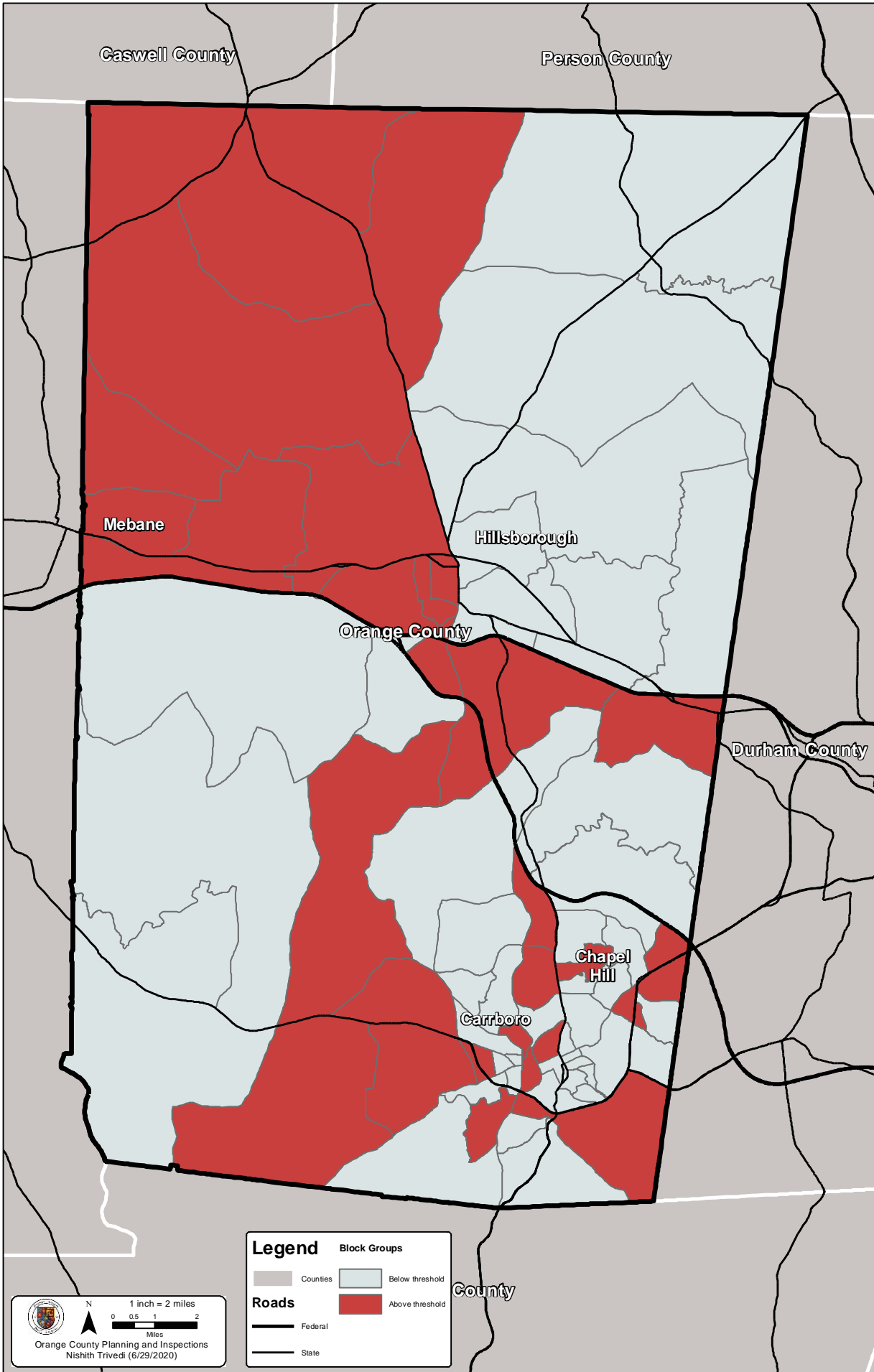
Legend

Block Groups	
	0 Overlap
	1 Overlap
	2 Overlap
	3 Overlap
	4 Overlap

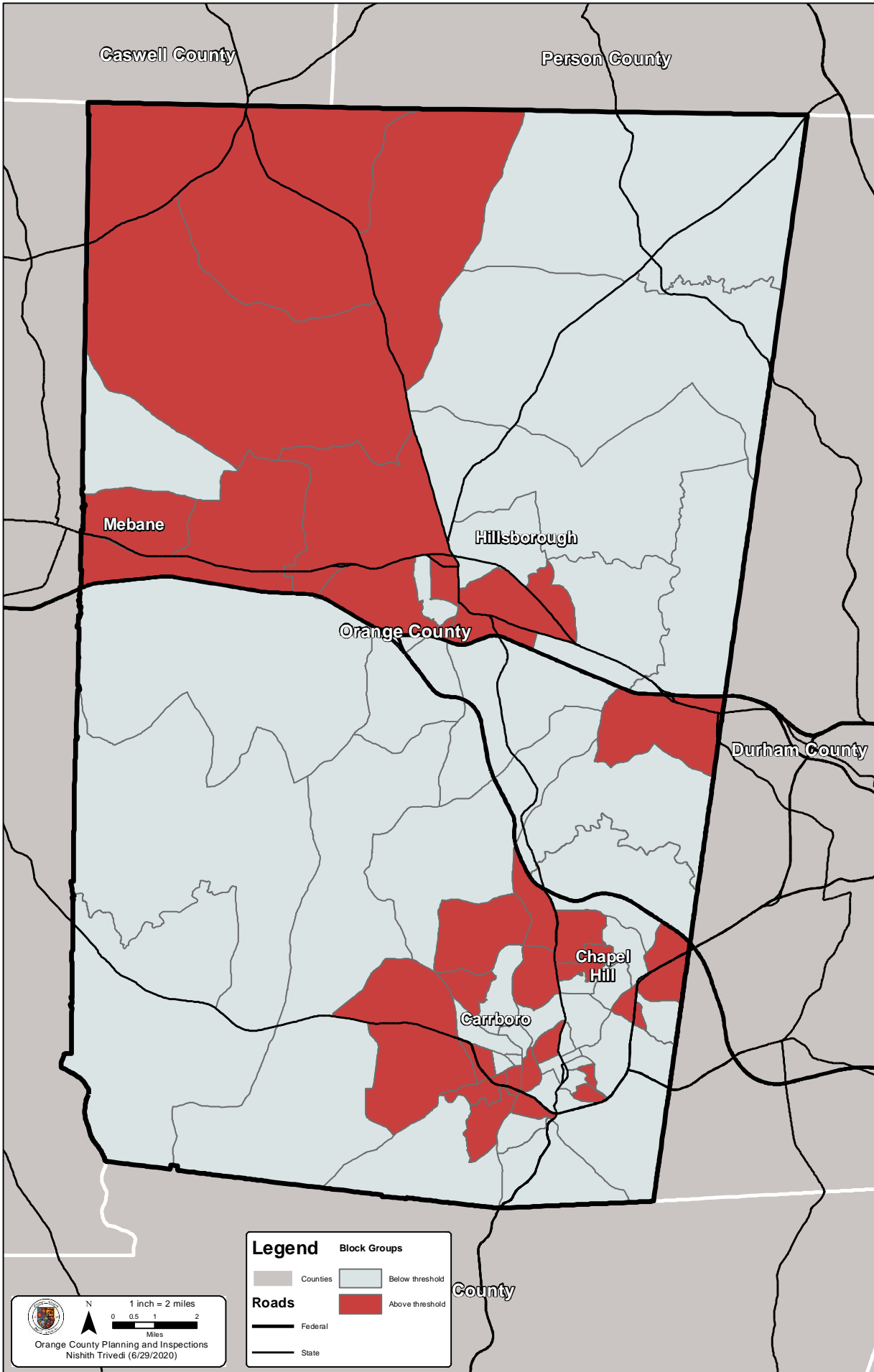
Roads

-  Federal
-  State

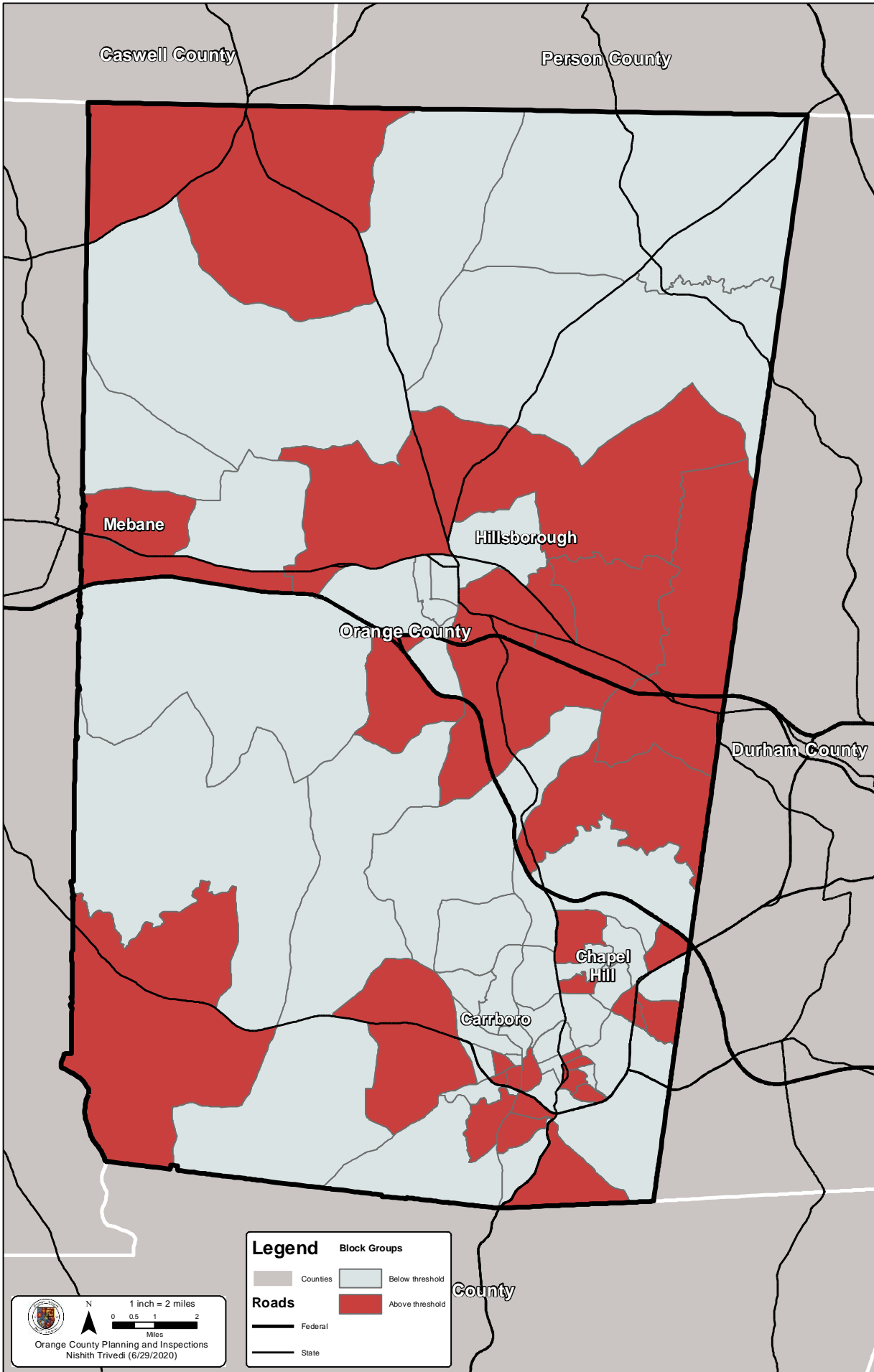
Environmental Justice - County Level Analysis - Black



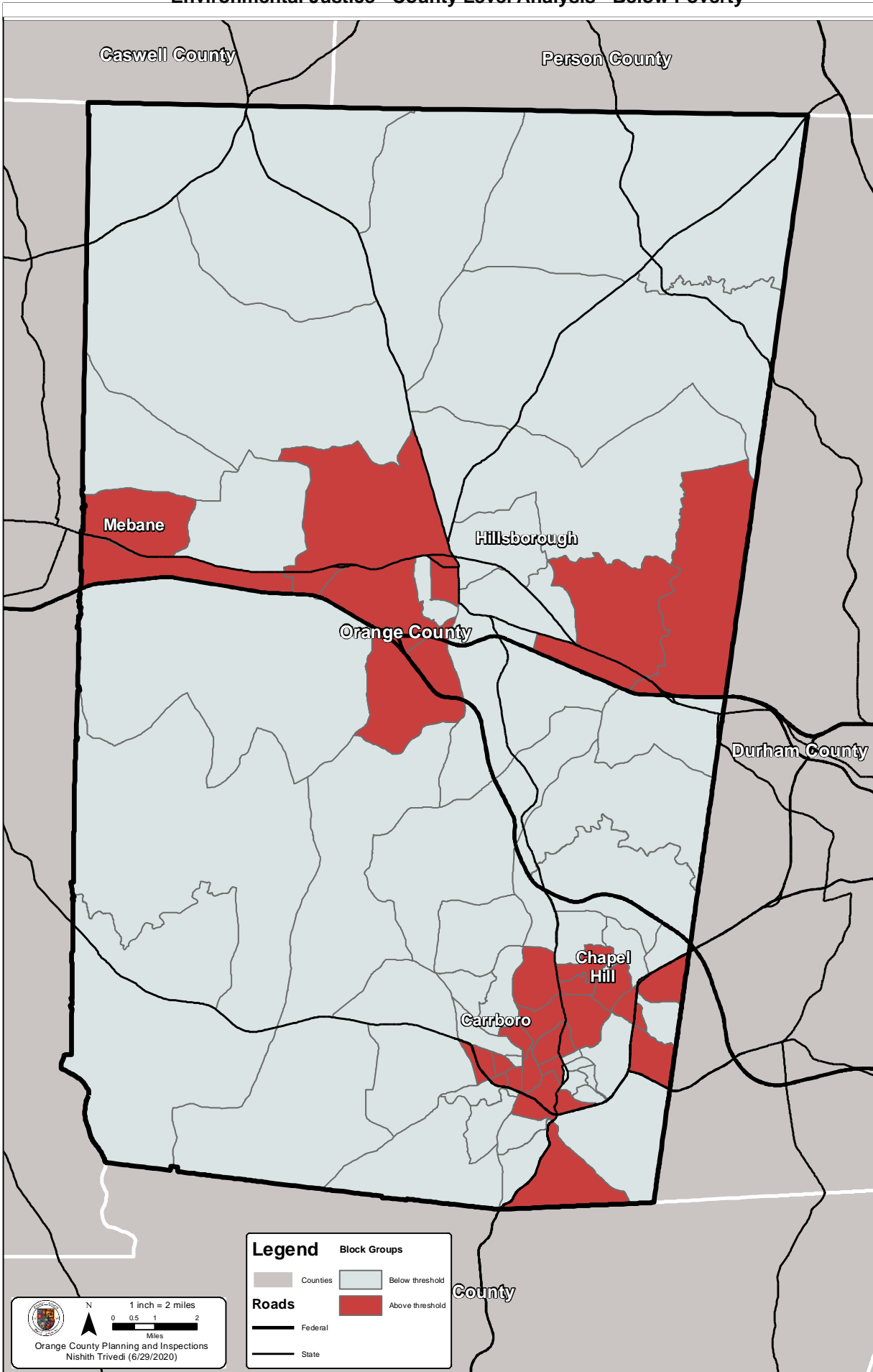
Environmental Justice - County Level Analysis - Minority



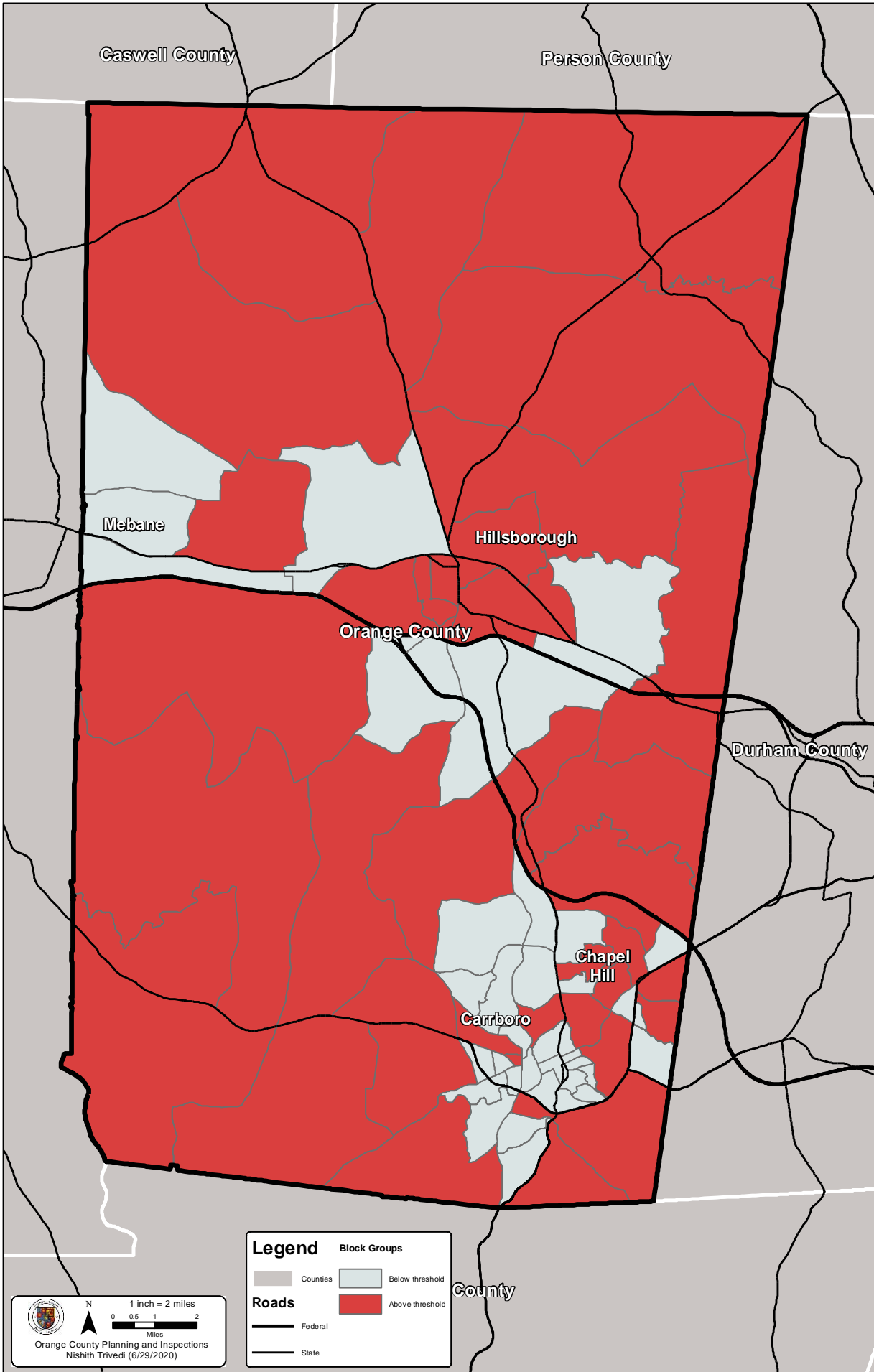
Environmental Justice - County Level Analysis - Hispanic/Latino



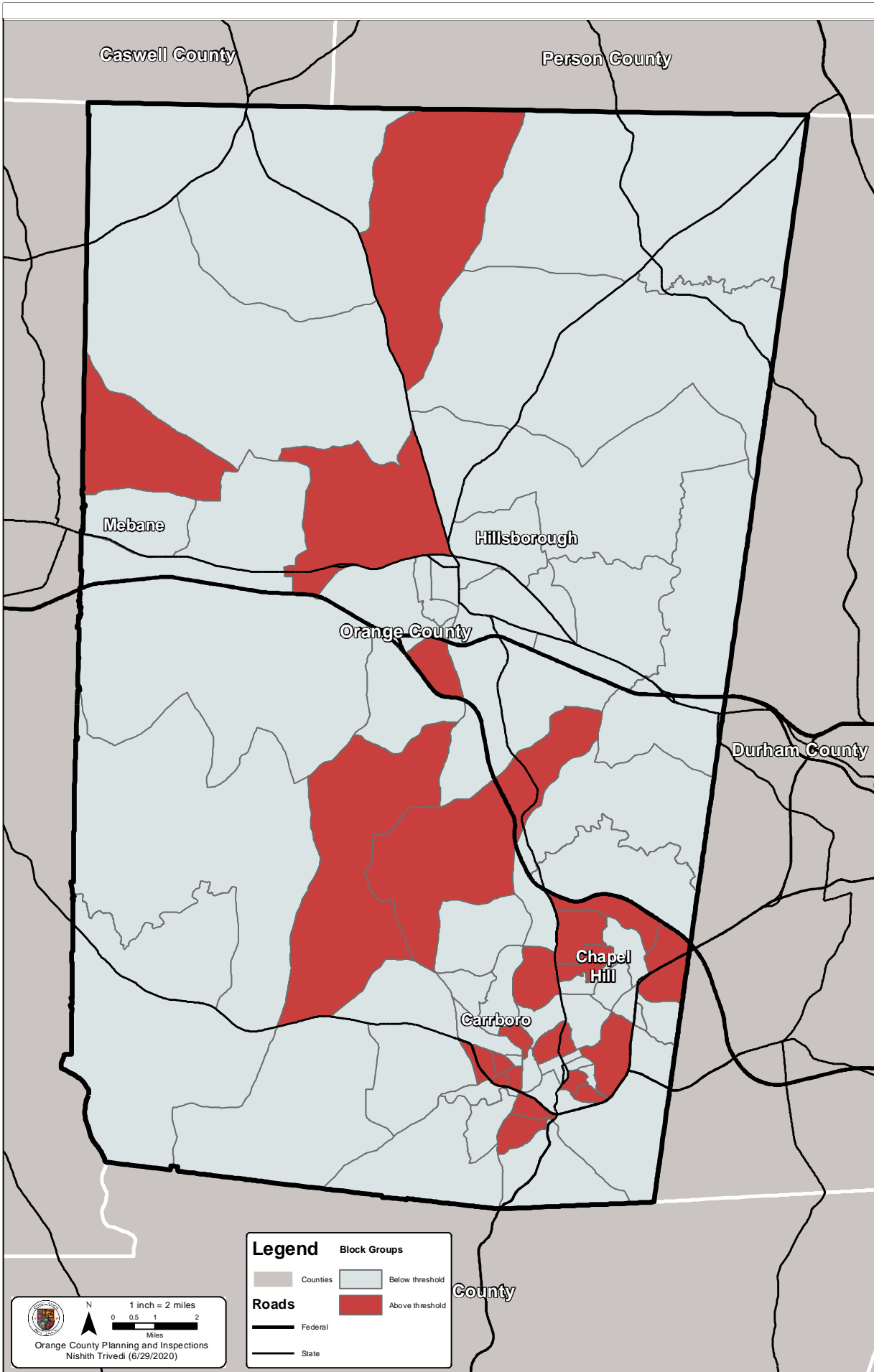
Environmental Justice - County Level Analysis - Below Poverty



Environmental Justice - County Level Analysis - Elderly



Environmental Justice - County Level Analysis - Zero Car Household



Environmental Justice - County Level Analysis - Limited English Proficiency (LEP)

